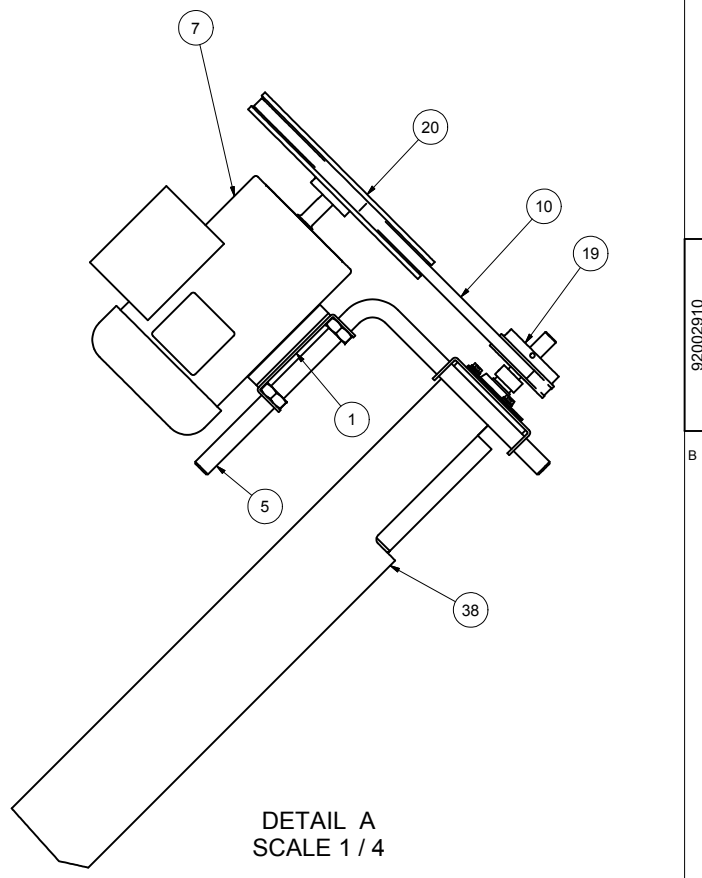
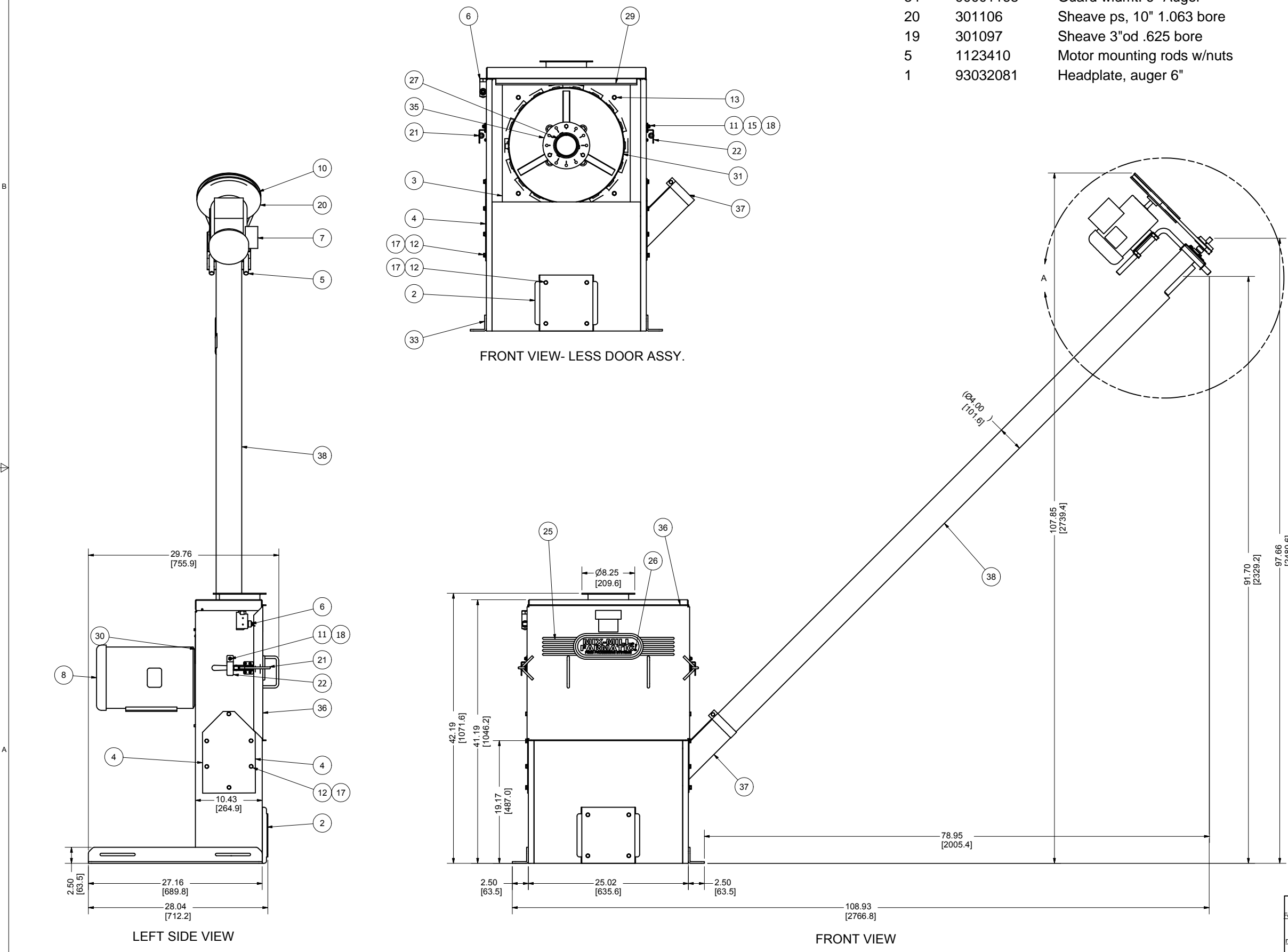


# 6" Auger items

REV	LTR	DESCRIPTION	DATE	APPROVED
A	070036	RELEASED	3/14/2007	PGGALEA
B	070036	ADDED DETAIL # 33 AS LINE ITEM	5/22/2007	PGGALEA
C	070036	ADDED DETAILS # 8, 36 & 37	7/16/2007	PGGALEA
D	090154	70004510 PLATE, CLAMP (2)	5/27/2009	pggalea

Item	Part#	Description
38	93032240	Auger Assy. 6"x10"
37	92002920	Guide Assy. 6"
34	90001168	Guard wldmt. 6" Auger
20	301106	Sheave ps, 10" 1.063 bore
19	301097	Sheave 3"od .625 bore
5	1123410	Motor mounting rods w/nuts
1	93032081	Headplate, auger 6"

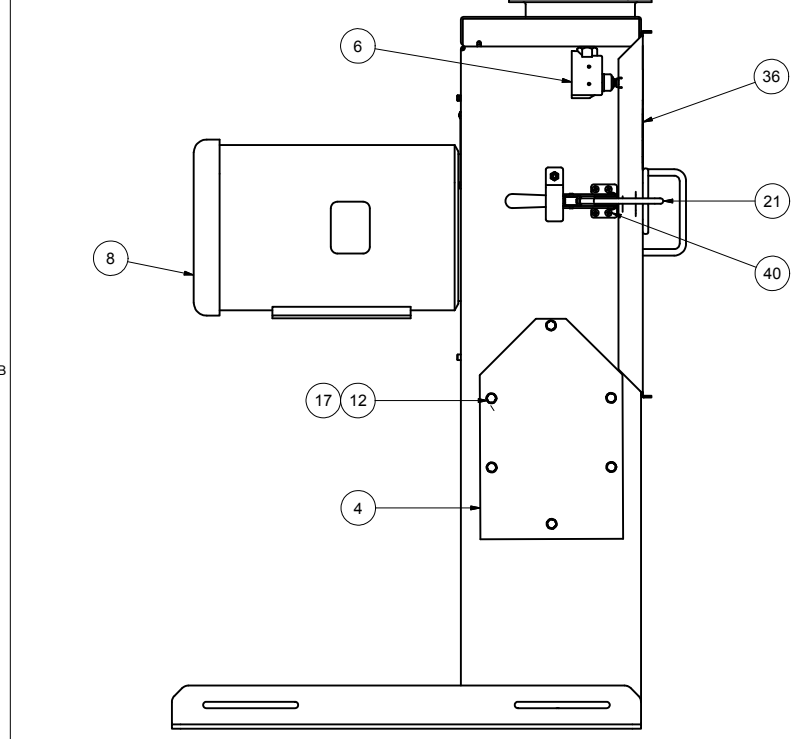


ITEM	PART NUMBER	QTY	DESCRIPTION
40	F83841002	8	SCW, MACH 10-32 X 5/8" PAN CROSS HEAD
39	F82631032	8	NUT, KEPS 10-32
*	38	93005226	1 AUGER ASSY, 4.0" X 10.0', SENTRY 145
*	37	92002916	1 GUIDE ASSY, 4.00", SENTRY 145
	36	92000799	1 GRINDER DOOR ASSY
	35	92000234	1 BEATER HUB W/HAMMERS-D
*	34	90001166	1 GUARD WLDMT, 4.0" AUGER, SENTRY 145
	33	90001136	1 HOUSING WLDMT, SENTRY 145
	32	90000871	1 INLET WLDMT, 6" DIA SENTRY 1000
	31	90000142	1 SCREEN, 3/16 "D" WLDMT ASSY
*	30	80020017	1 PLATE, BUILD: CLIPPER, FERRELL-ROSS
	29	80014003	1 SPONGE, RUBBER .313 X .75" X 25'
	28	80014002	1 TAPE, POLYURETHANE, .38X.50"
	27	80010509	1 CAPPLUG-D HUB
	26	80006517	2 DECAL, MOTOR WARRANTY SERVICE
*	25	80003662	1 DECAL, MIX-MILL / FARMATIC 5 X 21
	24	70010504	4 HHCS,W/LOCK 1/2-13 X 1.00"
	23	70007001	4 RIVET, POP SDS54 .156X.13-.38"
	22	70004513	2 PLATE, CLAMP LATCH ACTION
	21	70004510	2 LATCH, MILL DOOR CL-250-PA
*	20	6A9 *****	1 SHEAVE, 3.1 OD x 5/8 BORE **42108104
*	19	6A5 *****	1 SHEAVE, 3.1 OD x 5/8 BORE **301097
	18	67003300	2 NUT, HEX NYLOCK 1/4-20
	17	66443800	14 WASHER, LOCK HELICAL 5/16"
	16	66443300	11 WASHER, LOCK HELICAL 1/4"
	15	66403300	2 WASHER, FLAT 1/4"
	14	65483317	9 HEX SLT HD T/C 1/4-20 X 3/4"
	13	65403817	4 SCW, HX HD T/C 5/16-18 X 3/4"
	12	62583815	10 HHCS, 5/16-18 X 5/8"
	11	62583317	2 HHCS, 1/4-20 X 3/4"
*	10	45001041	1 V-BELT STANDARD A SECT-41
	9	44010716	1 BSHG, QD SD 1.375"
*	8	33000602	1 MTR, 7.5 HP 1S36 O/6 TEFC C-F
*	7	33000300	1 MTR, .75 HP 1D18 0/6 TEFC FT
*	6	31008025	1 MICRO SWITCH - DOOR
*	5	2A63G2	2 MOTOR MOUNTING ROD W/NUTS
	4	11195929	1 PLATE, COVER, HOUSING, 45 DEG AUGER
	3	11195910	1 PLATE, WEAR, HOUSING, D MILL
	2	11195740	1 DOOR, CLEAN OUT, SENTRY 145
*	1	10045210	1 HEADPLATE, AUGER, 4.00"

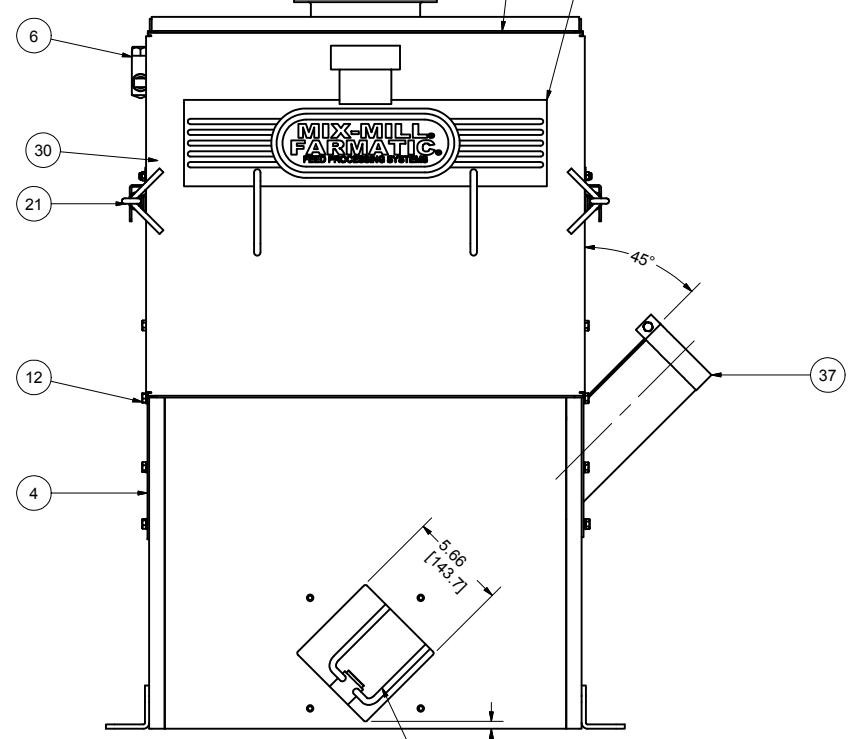
NOTES:  
 1. DO NOT SCALE FROM DRAWING.  
 2. ALTERNATIVE DIMENSION (XX.XX) IN MILLIMETERS.  
 3. \* LINE ITEM ON SALES ORDER, NOT INCLUDED IN MANUFACTURING BILL OF MATERIALS, SEE SALES ORDER.

This drawing is the property of the A.T. Ferrell Company, Inc. and must be returned immediately upon request. No part of this drawing may be reproduced, stored in a retrieval system or transmitted in any form or by any means, without prior written consent of the A.T. Ferrell Company, Inc.		<b>CAD</b> NO MANUAL CHANGES TO TOLERANCES EXCEPT AS NOTED DIVISION OF A. T. FERRELL COMPANY SCALE: 1:8 DRAWN BY: pggalea DATE: 12/24/2006 SIZE: D PART NUMBER: 92002910		BLUFETON, INDIANA - USA APPROVED BY:	
DECIMAL: xxx = .005 XX = .030 FRACTIONAL: +1/32 ANGULAR: = 1/2-		TITLE: HOUSING ASSY, SENTRY 145		SHEET: 1 of 2	

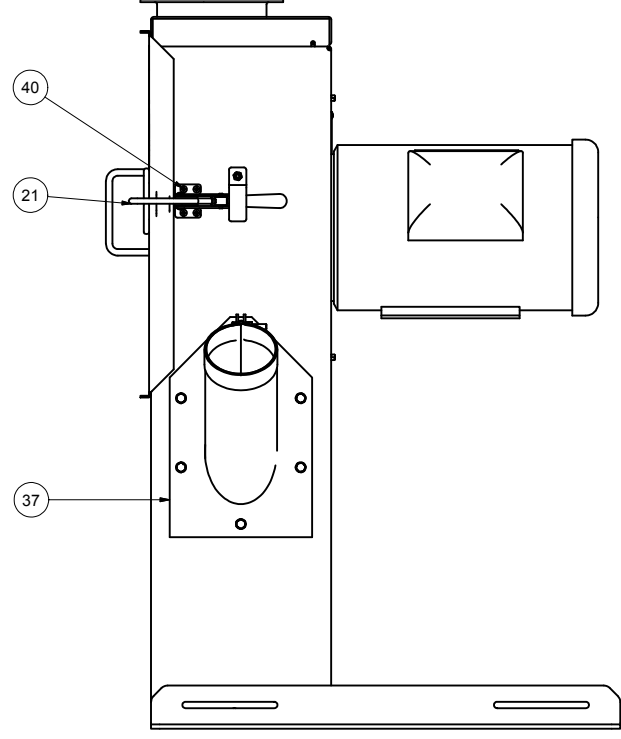
REV	LTR	DESCRIPTION	DATE	APPROVED
A	070036	RELEASED	3/14/2007	PGGALEA
B	070036	ADDED DETAIL # 33 AS LINE ITEM	5/22/2007	PGGALEA
C	070036	ADDED DETAILS # 8, 36 & 37	7/16/2007	PGGALEA
D	090154	70004510 PLATE, CLAMP (2)	5/27/2009	pggalea



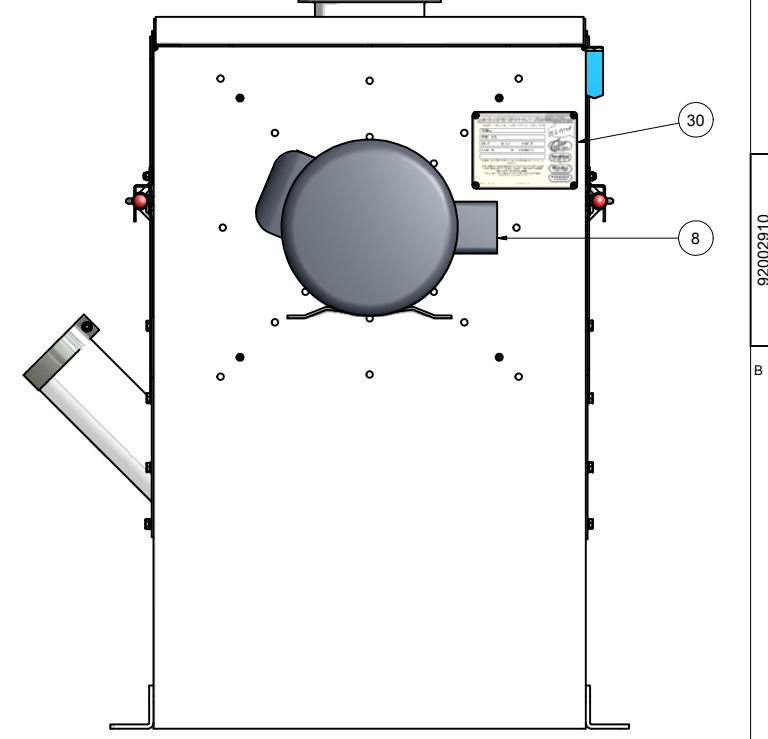
LEFT SIDE VIEW



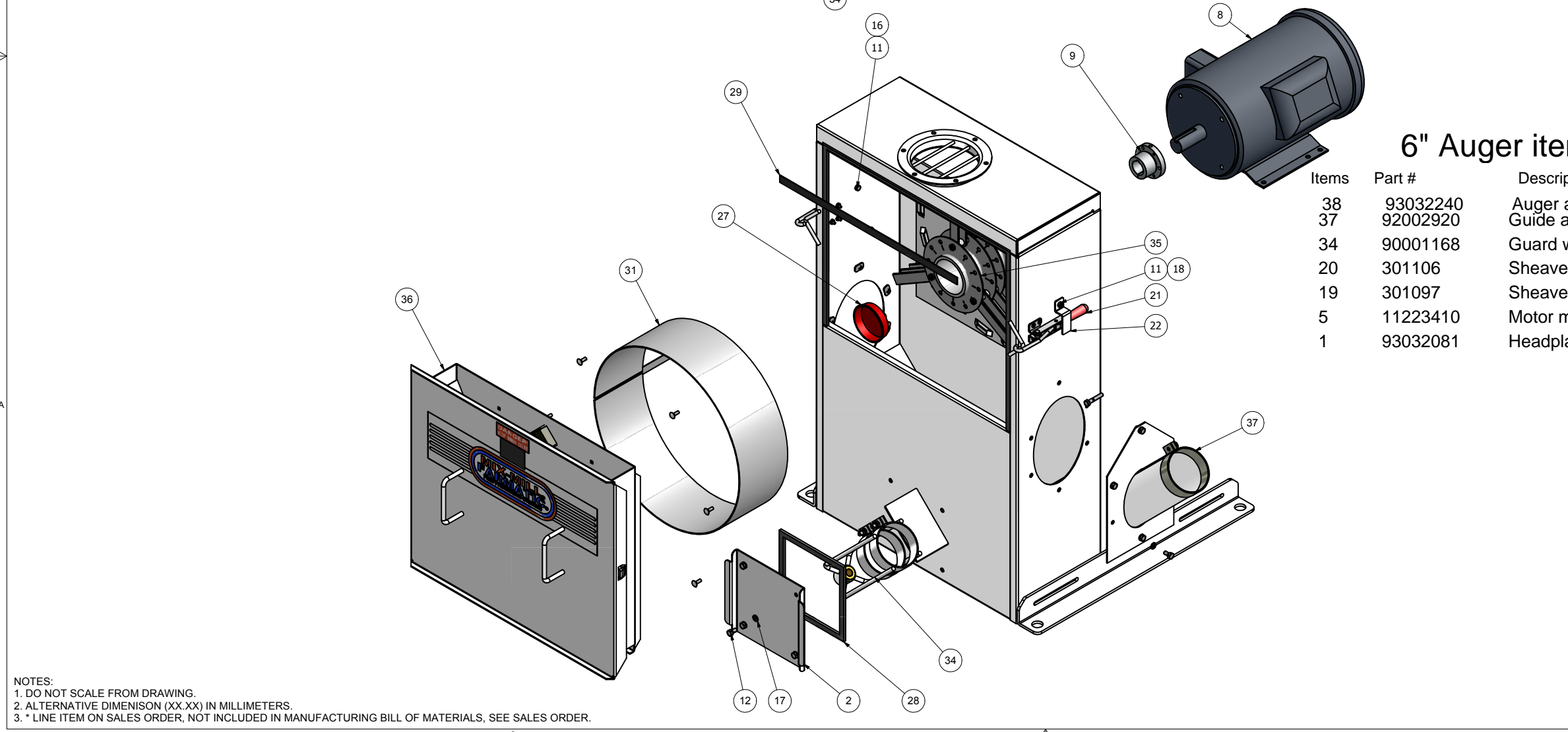
FRONT VIEW



RIGHT SIDE VIEW



REAR VIEW



6" Auger items

Items	Part #	Description
38	93032240	Auger assy.6"x10"
37	92002920	Guide assy. 6"
34	90001168	Guard wldmt. 6"
20	301106	Sheave 10" w/1.063
19	301097	Sheave 3" w/.625"
5	11223410	Motor mounting w/nuts
1	93032081	Headplate 6"

ITEM	PART NUMBER	QTY	DESCRIPTION
40	F83841002	8	SCW, MACH 10-32 X 5/8" PAN CROSS HEAD
39	F82631032	8	NUT, KEPS 10-32
*	38	93005226	1 AUGER ASSY, 4.0" X 10.0', SENTRY 145
*	37	92002916	1 GUIDE ASSY, 4.00", SENTRY 145
	36	92000799	1 GRINDER DOOR ASSY
	35	92000234	1 BEATER HUB W/HAMMERS-D
*	34	90001166	1 GUARD WLDMT, 4.0" AUGER, SENTRY 145
	33	90001136	1 HOUSING WLDMT, SENTRY 145
	32	90000871	1 INLET WLDMT, 6" DIA SENTRY 1000
	31	90000142	1 SCREEN, 3/16 "D" WLDMT ASSY
*	30	80020017	1 PLATE, BUILD: CLIPPER, FERRELL-ROSS
	29	80014003	1 SPONGE, RUBBER .313 X .75" X 25'
	28	80014002	1 TAPE, POLYURETHANE, .38X.50"
	27	80010509	1 CAPLUG-D HUB
	26	80006517	2 DECAL, MOTOR WARRANTY SERVICE
*	25	80003662	1 DECAL, MIX-MILL / FARMATIC 5 X 21
	24	70010504	4 HHCS,W/LOCK 1/2-13 X 1.00"
	23	70007001	4 RIVET, POP SDS54 .156X.13-.38"
	22	70004513	2 PLATE, CLAMP LATCH ACTION
	21	70004510	2 LATCH, MILL DOOR CL-250-PA
*	20	6A9 *****	1 SHEAVE ***42108104
	19	6A5 *****	1 SHEAVE, 3.1 OD x 5/8 BORE ***301097
	18	67003300	2 NUT, HEX NYLOCK 1/4-20
	17	66443800	14 WASHER, LOCK HELICAL 5/16"
	16	66443300	11 WASHER, LOCK HELICAL 1/4"
	15	66403300	2 WASHER, FLAT 1/4"
	14	65483317	9 HEX SLT HD T/C 1/4-20 X 3/4"
	13	65403817	4 SCW, HX HD T/C 5/16-18 X 3/4"
	12	62583815	10 HHCS, 5/16-18 X 5/8"
	11	62583317	2 HHCS, 1/4-20 X 3/4"
*	10	45001041	1 V-BELT STANDARD A SECT-41
	9	44010716	1 BSHG, QD SD 1.375"
*	8	33000602	1 MTR, 7.5 HP 1S36 O/6 TEFC C-F
*	7	33000300	1 MTR, .75 HP 1D18 O/6 TEFC FT
*	6	31008025	1 MICRO SWITCH - DOOR
*	5	2A63G2	2 MOTOR MOUNTING ROD W/NUTS
	4	11195929	1 PLATE, COVER, HOUSING, 45 DEG AUGER
	3	11195910	1 PLATE, WEAR, HOUSING, D MILL
	2	11195740	1 DOOR, CLEAN OUT, SENTRY 145
*	1	10045210	1 HEADPLATE, AUGER, 4.00"

NOTES:  
 1. DO NOT SCALE FROM DRAWING.  
 2. ALTERNATIVE DIMENSION (XX.XX) IN MILLIMETERS.  
 3. \* LINE ITEM ON SALES ORDER, NOT INCLUDED IN MANUFACTURING BILL OF MATERIALS, SEE SALES ORDER.

This drawing is the property of the A.T. Ferrell Company, Inc. and must be returned immediately upon request. No part of this drawing may be reproduced, stored in a retrieval system or transmitted in any form or by any means, without prior written consent of the A.T. Ferrell Company, Inc.

**CAD**  
 NO MANUAL CHANGES TO TOLERANCES EXCEPT AS NOTED

DEPARTMENT: DIVISION OF A. T. FERRELL COMPANY  
 SCALE: 1:8  
 DRAWN BY: pggalea  
 APPROVED BY:

DECIMAL: xxx = .005  
 XX = .030  
 FRACTIONAL: +1/32  
 ANGULAR: = 1/2-

TITLE: HOUSING ASSY, SENTRY 145  
 DATE: 12/24/2006  
 SIZE: D  
 PART NUMBER: 92002910  
 SHEET: 2 of 2