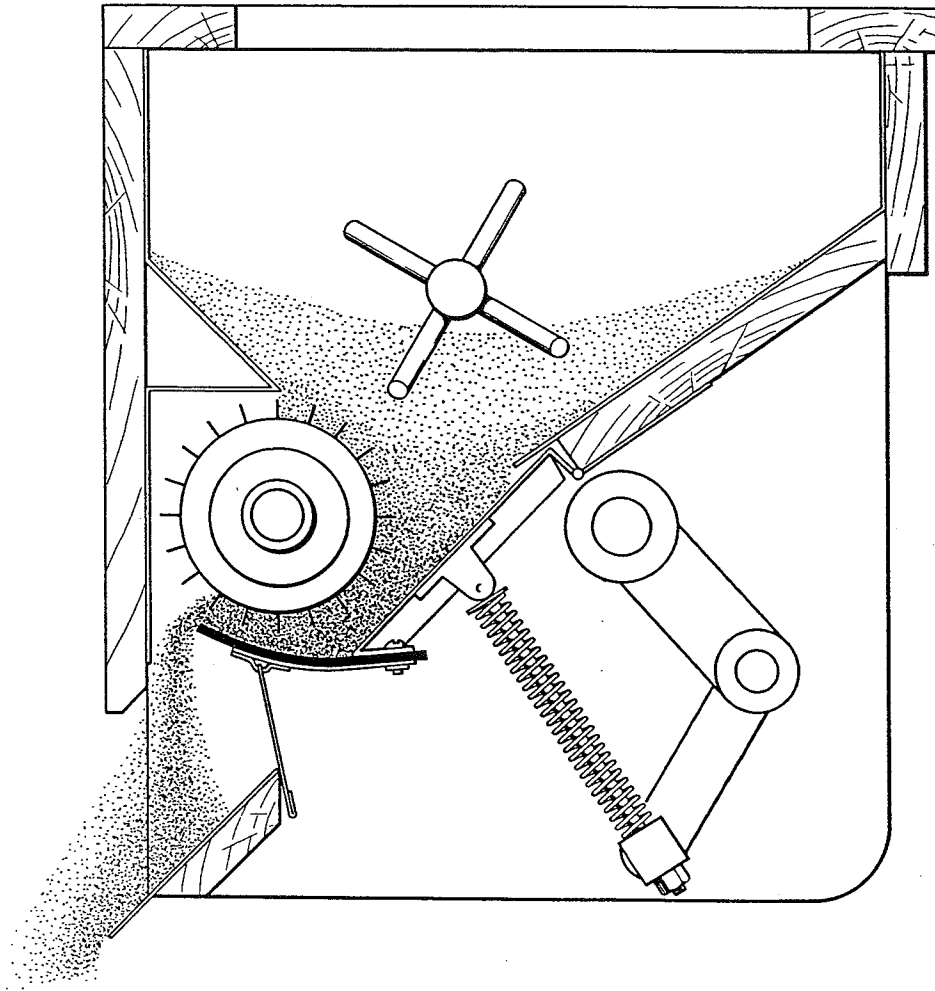


1440 S. Adams Street  
Bluffton, IN 46714



# **CHEK-FLO METERING HOPPER**

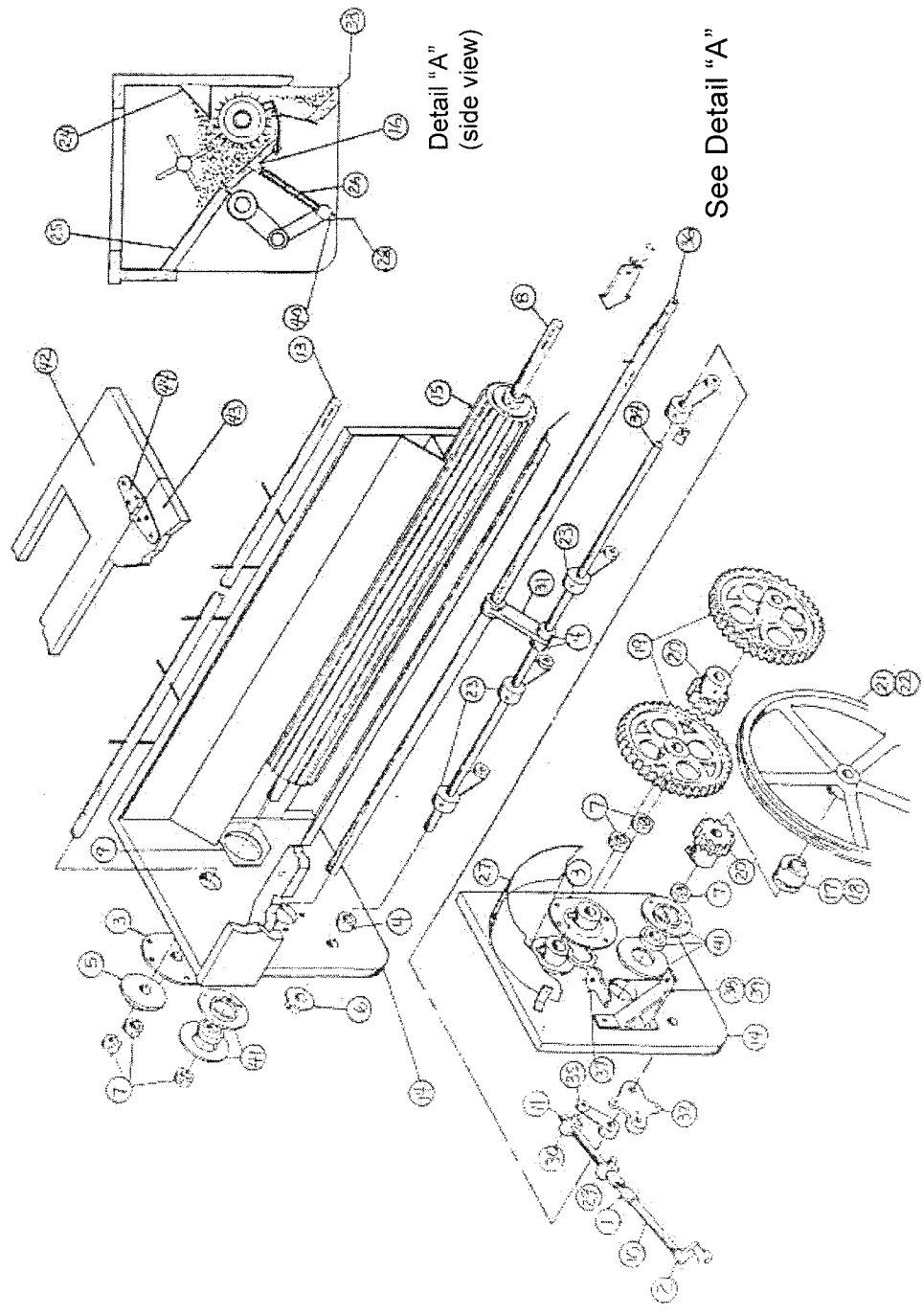
# CLIPPER CHEK-FLOW HOPPER

ITEM DESCRIPTION	7 WIDE		9 WIDE		8 WIDE	
	QTY	PART NO.	QTY	PART NO.	QTY	PART NO.
1 U-Joint	1	F01005500	1	F01005500	1	F01005500
2 Hand Crank Assembly	1	F04001600	1	F04001600	1	F04001600
3 5-1/4" Flange Bearing, 1"Bore	3	F01100000	3	F01100000	3	F01100000
4 Cast Collar, 3/4" bore	3	F01102002	3	F01102002	3	F01102002
5 3-1/2" Flange bearing, 1"Bore	1	F01102800	1	F01102800	1	F01102800
6 Flange Bearing, 3/4"Bore	1	F01103000	1	F01103000	1	F01103000
7 Cast Collar, 1"Bore	4	F80012003	3	F80012003	3	F80012003
8 Roll Shaft, 1" Diameter	1	F01604310	1	F01604320	1	F01604330
		(1" X 40")		(1" X 48")		(1" X 60")
9 Escutcheon Plates	2	F01801200	2	F01801200	2	F01801200
*10 Screw Shaft, Handle 5/8 x 6-3/4(Below)	1	F01805700	1	F01805700	1	F01805700
11 Screw Shaft, Universal 5/8 x 6 (Standard)	1	F01805800	1	F01805800	1	F01805800
12 Hopper Gate Assembly, Complete	1	F04401411	1	F04401412	1	F04401413
13 Spike Shaft w/Straight Spikes	1	F04321803	1	F04321800	1	F04321810
Spike Shaft w/Bent Spikes	1	F04004200	1	F04004300	1	F04004400
		(1" X 40")		(1" X 48")		(1" X 60")
14 End Board, Right or Left	2	F04108600	2	F04108600	2	F04108600
15 Roll Assembly w/Staves and Flanges	1	F04006701	1	F04006703	1	F04006702
16 Gate Lever Bracket	2	F04200300	3	F04200300	4	F04200300
17 Clutch, Right Hand	1	F04200500	1	F04200500	1	F04200500
18 Clutch, Left Hand	1	F04200600	1	F04200600	1	F04200600
19 60 Tooth Spur Gear, 1" Bore	2	F04201300	2	F04201300	2	F04201300
20 15 Tooth Pinion Gear, 1" Bore	2	F04201400	2	F04201400	2	F04201400
21 16" Clutch Sheave, Right Hand	1	F04201700	1	F04201700	1	F04201700
22 16" Clutch Sheave, Left Hand	1	F04201800	1	F04201800	1	F04201800
23 Slide Lever	2	F04203100	3	F04203100	4	F04203100
24 Back Slide Metal	1	F04300310	1	F04300320	1	F04300330
		(15-1/8"X30-1/16)		(15-1/8 X 38-1/16)		(15-1/8 X 50-1/16)
25 Front Slide Metal	1	F04300410	1	F04300420	1	F04300430
		(6-7/8 X 30-1/16)		(6-7/8 X 38-1/16)		(6-7/8 X 50-1/16)
26 Gate Springs	2	F92700009	3	F92700009	4	F92700009
27 Gear Guard	1	F04303900	1	F04303900	1	F04303900
28 Spring Guide Pins	2	F04312800	3	F04312800	4	F04312800
29 Pivot Nut, Plain	1	F04313100	1	F04313100	1	F04313100
30 Pivot Nut, Threaded	1	F04313200	1	F04313200	1	F04313200
31 Hopper Center Support	1	F04313400	1	F04313400	1	F04313400

\* THIS SHAFT WOULD BE USED IF THE HAND CRANK ASSEMBLY (2) IS MOUNTED DIRECTLY ON THIS SHAFT

# CLIPPER CHEK-FLOW HOPPER

ITEM DESCRIPTION	7 WIDE		9 WIDE		8 WIDE	
	QTY	PART NO.	QTY	PART NO.	QTY	PART NO.
32 Swivel Plate, Bearing	1	F04313500	1	F04313500	1	F04313500
33 Bottom Slide Plate, Metal	1	F04300110	1	F04300120	1	F04300140
		(4-1/2 X 28-7/8)		(4-1/2 X 40-3/8)		(4-1/2 X 50-1/8)
34 Gate Shaft	1	F04314300	1	F04313000	1	F04314200
		(3-4 X 33)		(3-4 X 40-3/4)		(3/4 X 52-3/4)
35 Pivot Lever	1	F04314800	1	F04314800	1	F04314800
36 Drive Shaft	1	F04304900	1	F04316400	1	F04316000
		(3/4 X 45-1/2)		(3/4 X 54)		(3/4 X 66-1/2)
37 Clutch Handle, Extended	1	F04316600	1	F04316600	1	F04316600
38 Clutch Bracket, Ext. Handle-Left Hand	1	F04318210	1	F04318210	1	F04318210
39 Clutch Bracket, Ext. Handle-Right Hand	1	F04318220	1	F04318220	1	F04318220
40 Nylock nuts (3/18-16)	2	70010002	3	70010002	4	70000002
41 Fafnir Bearing	2	F92460200	2	F92460200	2	F92460200
42 Top Hopper Board w/Hole	1	F04106610	1	F04106620	1	F04106630
43 Top Hopper Board (Front)	1	F04106640	1	F04106650	1	F04106660
44 Hinge, Hopper Top	2	F98200006	2	F98200006	2	F98200006
Complete Check Flow Hopper	LH	F04006810	LH	F04006820	LH	F04006830
	RH	F04006878	RH	F04006879	RH	F04006880
Washer						
Bolt in End of Drive Shaft						



**CHECK-FLO METERING HOPPER**