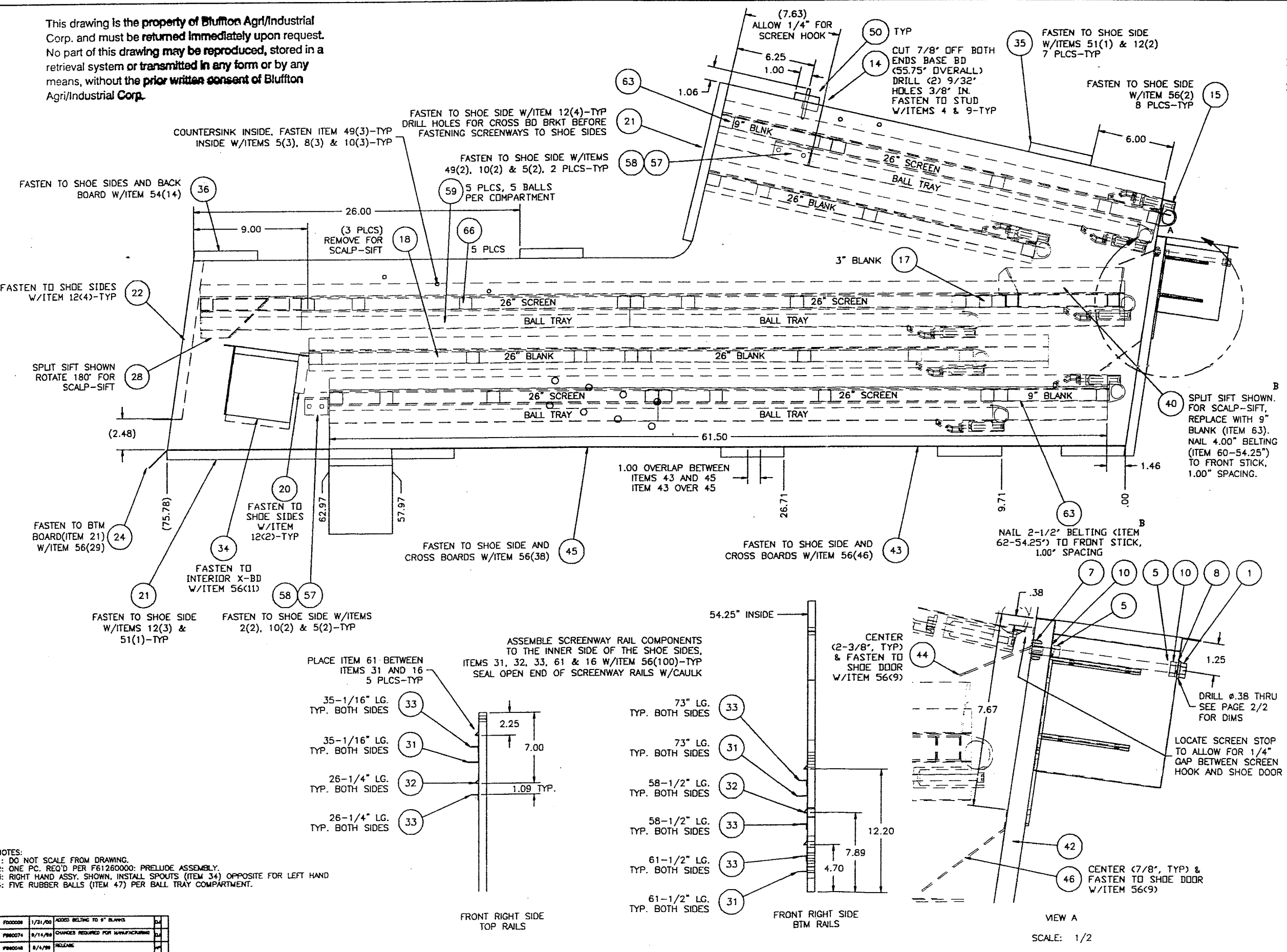


This drawing is the property of Bluffton Agri/Industrial Corp. and must be returned immediately upon request. No part of this drawing may be reproduced, stored in a retrieval system or transmitted in any form or by any means, without the prior written consent of Bluffton Agri/Industrial Corp.



66	SALES ORDER	5	26" SCREEN W/ LIP
65	F98600005	2	LATCH 61230M01ZB/SCD20650-9XZE
64	F98200006	4	HINGE, 3.00" TEE
63	F92053390	3	BLANK, SCREEN 26.25 x 9" W/ LIP
62	F91152006	5	BLTG, 1/16 X 2.50" 1-PLY
61	F91152004	43	BLTG., 1/16 X 1.5" 2-PLY RUBBER
60	F91151004	5	BLTG, 1/16 X 4.00" 1-PLY
59	F90008270	5	BALL TRAY 26.25X54.00", WLDMT
58	F90005474	2	BALL TRAY STOP RH, WLDMT
57	F90005473	2	BALL TRAY STOP LH, WLDMT
56	F83453402	463	SCREW, SM #8 x .75" PAN HD.
55	F83450102	4	BOLT, ELEVATOR 1/4-20 x 1.25"
54	F83440301	34	SCREW, WOOD #10 x 1.5" FLT. HD. PLT
53	F83440135	16	SCREW, SM #10 x 1.75" RND. HD.
52	F83200011	15	RIVET, POP SDS64 .188x.125-.250"
51	F82400002	20	NAIL, 3/4" 14 GA. CEMENT 820/#
50	F82071401	2	STUD, DOWEL 1/4-20 X 2-1/2"
49	F82025603	56	BOLT, ELEVATOR 5/16-18 x 1.5" PLT
48	F82011404	28	BOLT, CARRIAGE 1/4-20 x 1.25" PLT
47	F80026101	240	BALL, RUBBER #1.375" BLACK
46	F69681279	1	SHOE FNT MTL 968 BTM SHOE
45	F61261325	1	SHOE BTM MTL II, PRELUDE
44	F61261324	1	DEFLECTOR, FRONT, PRELUDE SHOE
43	F61261322	1	SHOE BTM MTL I, PRELUDE
42	F61261321	1	DOOR, SHOE 1260
41	F61261320	2	SIDE, SHOE, PRELUDE
40	F61001216	1	SPLITTER 50/50, 9 X 54"
39	F61001214	1	DEFLECTOR, SPOUT 1360/1386
38	F61001212	8	BRACKET, CROSS BOARD 1360/1386
37	F61001210	2	HANGER SUPPORT WLDMT, CONQUEST
36	F61001209	2	CROSS BOARD 7 DEG 1360/1386
35	F61001208	5	CROSS BOARD 5" 1360/1386
34	F61001207	3	SPOUT, DISCHARGE 1360/1386
33	F61001206	10	SCREENWAY RAIL III
32	F61001205	4	SCREENWAY RAIL II
31	F61001204	6	SCREENWAY RAIL I
30	F61001203	2	PITMAN END 1360/1386
29	F61001200	1	PITMAN WELDMENT 1360/1386
28	F61001116	1	DEFLECTOR, BTM SHOE 1360/1386
27	F61001112	2	END IRON, BTM SHOE 1360/1386
26	F61001111	1	SPOUT HOLE COVER, BTM SHOE 1360/1386
25	F61001110	1	SHOE BACK MTL, BTM SHOE 1360/1386
24	F61001109	1	SHOE BTM MTL III, BTM SHOE 1360/1386
23	F61001106	2	HANGER STAND-OFF, BTM SHOE 1360/1386
22	F61001104	1	BACK BD, BTM SHOE, SPLT SI2/SC-SI
21	F61001103	2	CROSS BD, REAR, BTM SHOE 1360/1386
20	F61001102	1	CROSS BD, INT, BTM SHOE 1360/1386
19	F61001008	2	SUPPORT, DISCHARGE SPOUT 1360/1386
18	F10808000	3	BLANK, SCREEN 26.25 X 54" W/LIP
17	F10516200	1	BLANK, SCREEN 54.25" x 3" W/ LIP
16	F03805600	10	RUBBER HOLD DOWN CAP, 60" LG.
15	F03500800	16	SCREEN HOOK ASSY
14	F03401700	1	APRON BOARD ASSY
13	80016019	16	BOLT, ELEVATOR 1/2-13 x 2.00"
12	70010521	58	SCREW, DECK #6 x 2.00" PHP. HD. PLT
11	66445200	28	WASHER, LOCK 1/2"
10	66443800	60	WASHER, LOCK 5/16" PLT
9	66443300	28	WASHER, LOCK 1/4"
8	66403800	7	WASHER, FLAT 5/16" PLT
7	66383800	1	T-NUT, 5/16-18
6	66085200	24	NUT, HEX 1/2-13
5	66083800	60	HEX NUT, 5/16-18 PLT
4	66083300	28	NUT, HEX 1/4-20
3	62585226	8	BOLT, HEX HD. 1/2-13 x 1.25"
2	60283828	12	BOLT, CARRIAGE 5/16-18 x 1.5" PLT
1	60143860	1	BOLT, TAP HX HD 5/16-18 x 6.00"
ITEM	PART NUMBER	QTY.	DESCRIPTION

CAD NO MANUAL CHANGES		TOLERANCES (EXCEPT AS NOTED)	
DECIMAL: .0005	FRACTIONAL: 1/32	ANGULAR: ± 1/2	DATE: 8/4/99
FINISH: NONE		DRAWING TITLE: PRELUDE SHOE ASSEMBLY	
SCALE: 1=4		DRAWING NO.: F61261311	
APPROVED BY: A.R.P.		SHEET: 1 of 2	

NOTES:
1: DO NOT SCALE FROM DRAWING.
2: ONE PC. REQ'D PER F61260000: PRELUDE ASSEMBLY.
3: RIGHT HAND ASSY. SHOWN, INSTALL SPOUTS (ITEM 34) OPPOSITE FOR LEFT HAND
4: FIVE RUBBER BALLS (ITEM 47) PER BALL TRAY COMPARTMENT.

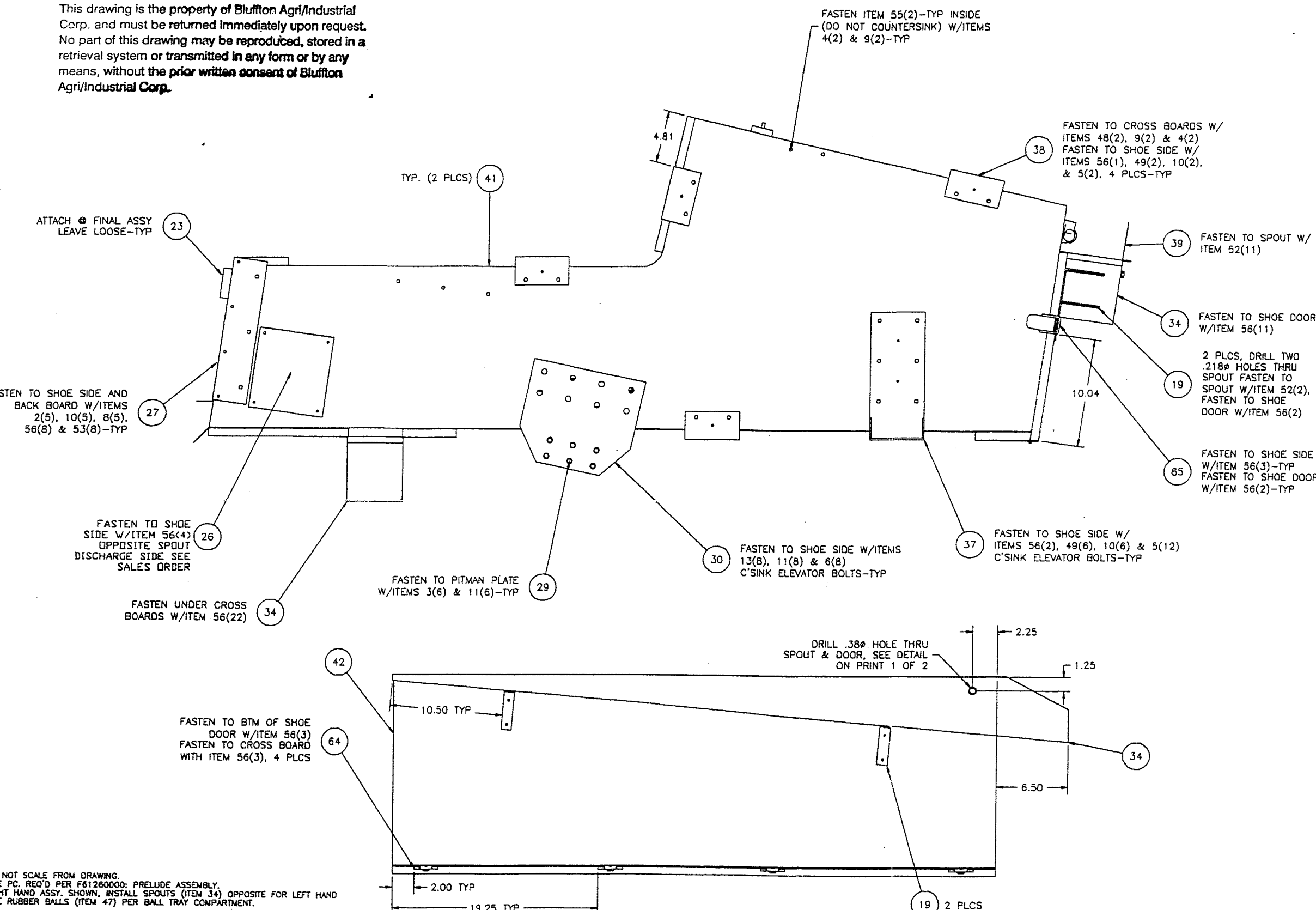
REV	DATE	DESCRIPTION OF CHANGE
000008	1/31/99	ADDED BELTING TO 9" BLANKS
000074	8/14/99	CHANGES REQUIRED FOR MANUFACTURING
000048	8/4/99	RELEASE

FRONT RIGHT SIDE TOP RAILS

FRONT RIGHT SIDE BTM RAILS

VIEW A
SCALE: 1/2

This drawing is the property of Bluffton Agri/Industrial Corp. and must be returned immediately upon request. No part of this drawing may be reproduced, stored in a retrieval system or transmitted in any form or by any means, without the prior written consent of Bluffton Agri/Industrial Corp.



66	SALES ORDER	5	26" SCREEN W/ LIP
65	F98600005	2	LATCH 61230M01ZB/SC020650-9XZE
64	F98200006	4	HINGE, 3.00" TEE
63	F92053390	3	BLANK, SCREEN 26.25 x 9" W/ LIP
62	F91152006	5	BLTG., 1/16 X 2.50" 1-PLY
61	F91152004	43	BLTG., 1/16 X 1.5" 2-PLY RUBBER
60	F91151004	5	BLTG., 1/16 X 4.00" 1-PLY
59	F90008270	5	BALL TRAY 26.25X54.00", WLDMT
58	F90005474	2	BALL TRAY STOP RH, WLDMT
57	F90005473	2	BALL TRAY STOP LH, WLDMT
56	F83453402	463	SCREW, SM #8 x .75" PAN HD.
55	F83450102	4	BOLT, ELEVATOR 1/4-20 x 1.25"
54	F83440301	34	SCREW, WOOD #10 x 1.5" FLT. HD. PLT
53	F83440135	16	SCREW, SM #10 x 1.75" RND. HD.
52	F83200011	15	RIVET, POP SDS64 .188x.125-.250"
51	F82400002	20	NAIL, 3/4" 14 GA. CEMENT B20/#
50	F82071401	2	STUD, DOWEL 1/4-20 x 2-1/2"
49	F82025603	56	BOLT, ELEVATOR 5/16-18 x 1.5" PLT
48	F82011404	28	BOLT, CARRIAGE 1/4-20 x 1.25" PLT
47	F80026101	240	BALL, RUBBER ø1.375" BLACK
46	F69681279	1	SHOE FNT MTL 968 BTM SHOE
45	F61261325	1	SHOE BTM MTL II, PRELUDE
44	F61261324	1	DEFLECTOR, FRONT, PRELUDE SHOE
43	F61261322	1	SHOE BTM MTL I, PRELUDE
42	F61261321	1	DOOR, SHOE 1260
41	F61261320	2	SIDE, SHOE, PRELUDE
40	F61001216	1	SPLITTER 50/50, 9 X 54"
39	F61001214	1	DEFLECTOR, SPOUT 1360/1386
38	F61001212	8	BRACKET, CROSS BOARD 1360/1386
37	F61001210	2	HANGER SUPPORT WLDMT, CONQUEST
36	F61001209	2	CROSS BOARD 7 DEG 1360/1386
35	F61001208	5	CROSS BOARD 5" 1360/1386
34	F61001207	3	SPOUT, DISCHARGE 1360/1386
33	F61001206	10	SCREENWAY RAIL III
32	F61001205	4	SCREENWAY RAIL II
31	F61001204	6	SCREENWAY RAIL I
30	F61001203	2	PITMAN END 1360/1386
29	F61001200	1	PITMAN WELDMENT 1360/1386
28	F61001116	1	DEFLECTOR, BTM SHOE 1360/1386
27	F61001112	2	END IRON, BTM SHOE 1360/1386
26	F61001111	1	SPOUT HOLE COVER, BTM SHOE 1360/1386
25	F61001110	1	SHOE BACK MTL, BTM SHOE 1360/1386
24	F61001109	1	SHOE BTM MTL III, BTM SHOE 1360/1386
23	F61001106	2	HANGER STAND-OFF, BTM SHOE 1360/1386
22	F61001104	1	BACK BD, BTM SHOE, SPLT SI2/SC-SI
21	F61001103	2	CROSS BD, REAR, BTM SHOE 1360/1386
20	F61001102	1	CROSS BD, INT, BTM SHOE 1360/1386
19	F61001008	2	SUPPORT, DISCHARGE SPOUT 1360/1386
18	F10808000	3	BLANK, SCREEN 26.25 X 54" W/LIP
17	F10516200	1	BLANK, SCREEN 54.25" x 3" W/ LIP
16	F03805600	10	RUBBER HOLD DOWN CAP, 60" LG.
15	F03500800	16	SCREEN HOOK ASSY
14	F03401700	1	APRON BOARD ASSY
13	80016019	16	BOLT, ELEVATOR 1/2-13 x 2.00"
12	70010521	58	SCREW, DECK #6 x 2.00" PHP. HD. PLT
11	66445200	28	WASHER, LOCK 1/2"
10	66443800	60	WASHER, LOCK 5/16" PLT
9	66443300	28	WASHER, LOCK 1/4"
8	66403800	7	WASHER, FLAT 5/16" PLT
7	66383800	1	T-NUT, 5/16-18
6	66085200	24	NUT, HEX 1/2-13
5	66083800	60	HEX NUT, 5/16-18 PLT
4	66083300	28	NUT, HEX 1/4-20
3	62585226	8	BOLT, HEX HD. 1/2-13 x 1.25"
2	60283828	12	BOLT, CARRIAGE 5/16-18 x 1.5" PLT
1	60143860	1	BOLT, TAP HX HD 5/16-18 x 6.00"

ITEM	PART NUMBER	QTY.	DESCRIPTION
CAD			
NO MANUAL CHANGES			
TOLERANCES (EXCEPT AS NOTED)			
DECIMAL: .0005	FRACTIONAL: NONE	SCALE: 1=5	DRAWN BY: A.R.P.
A DIVISION OF BLUFFTON AGRI CORP. SINCE 1889 BLUFFTON, INDIANA, U.S.A.			
PRELUDE SHOE ASSEMBLY			
DATE: 8/4/99	SIZE: D	DRAWING NO.: F61261311	SHEET: 2 of 2

NOT SCALE FROM DRAWING.
 1 PC. REQ'D PER F61260000: PRELUDE ASSEMBLY.
 HT HAND ASSY. SHOWN, INSTALL SPOUTS (ITEM 34) OPPOSITE FOR LEFT HAND
 1 RUBBER BALLS (ITEM 47) PER BALL TRAY COMPARTMENT.

1/31/99	GOOD BELONG TO IT BLANKS	OK
8/11/99	CHANGES REQUIRED FOR MANUFACTURING	OK
8/11/99	RELEASE	OK
8/11/99	DESCRIPTION OF CHANGE	OK