

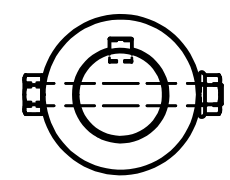
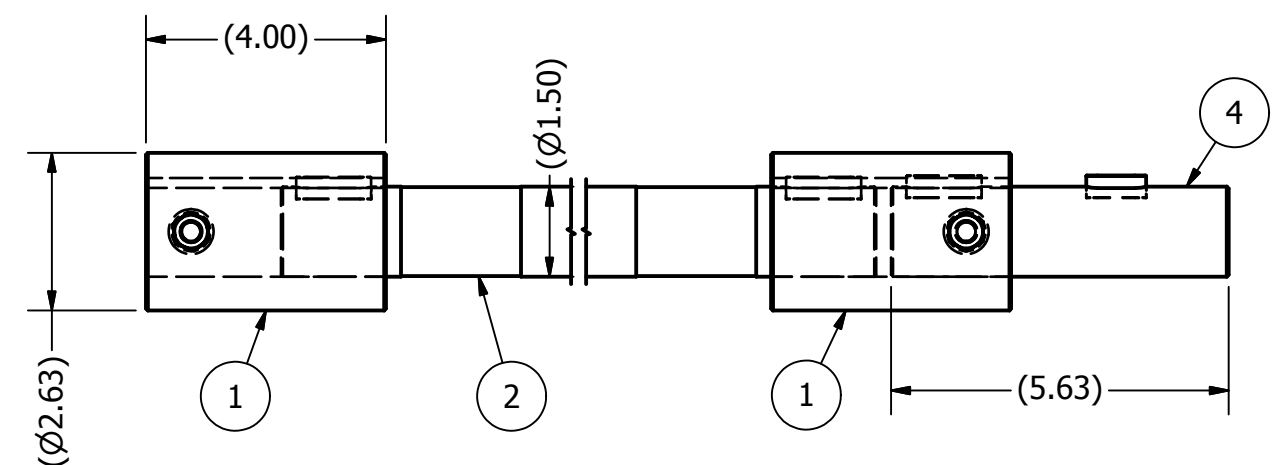
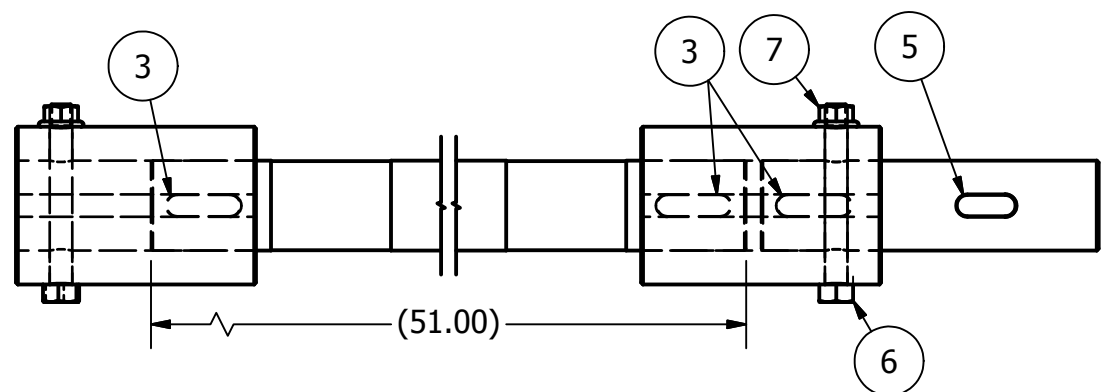
2

1

REVISION HISTORY

REV	ECN	DESCRIPTION	DATE	APPROVED
A	K010031	RELEASED	3/20/2001	DJ
B	K090016	REDRAWN IN INVENTOR	1/19/2009	SH

K100-00172




2	K200-00960	1	ROD, CONNECTING, ROLL RLSE 12 X 52"
1	K200-00115	2	COUPLING, ECCENTRIC ROD HD & XHD
4	K200-00100	1	ROD, SHORT, ECC ROLL RELEASE 12/18"
7	66784400	2	NUT, HEX SERR LOCK 3/8-16
6	62584442	2	HHCS, 3/8-16 X 3.00"
3	49400820	3	KEY, SQUARE, RND END .375 X 1.25"
5	49400816	1	KEY, SQUARE, RND END .375 X 1.00"
ITEM	PART NUMBER	QTY	DESCRIPTION

Parts List

NOTES:  
1. DO NOT SCALE FROM DRAWING.

This drawing is the property of the A.T. Ferrell Company, Inc and must be returned immediately upon request. No part of this drawing may be reproduced, stored in a retrieval system or transmitted in any form or by any means, without prior written consent of the A.T. Ferrell Company, Inc

<p><b>CAD</b> NO MANUAL CHANGES</p> <p><b>TOLERANCES</b> EXCEPT AS NOTED</p> <p>DECIMAL: xxx ± .005 xx ± .030</p> <p>FRACTIONAL: ± 1/32</p> <p>ANGULAR: ± 1/2'</p>			DIVISION OF A. T. FERRELL COMPANY		BLUFFTON, INDIANA - USA	
			FINISH:	SCALE:	DRAWN BY:	APPROVED BY:
	NONE	0.31:1	dmjohnson	DMJ	TITLE: ROD ASSY,CONNECTING, 12 X 52"	
	DATE: 6/3/2005	SIZE: B	PART NUMBER: K100-00172	SHEET: 1 of 1		

2

1