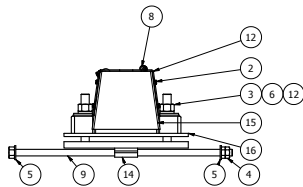
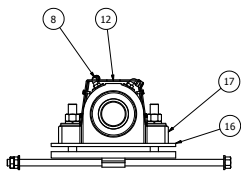
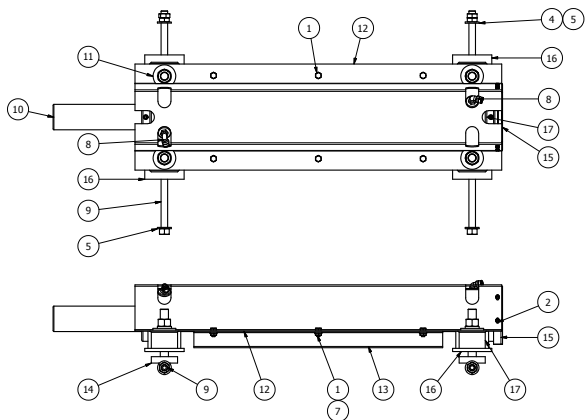
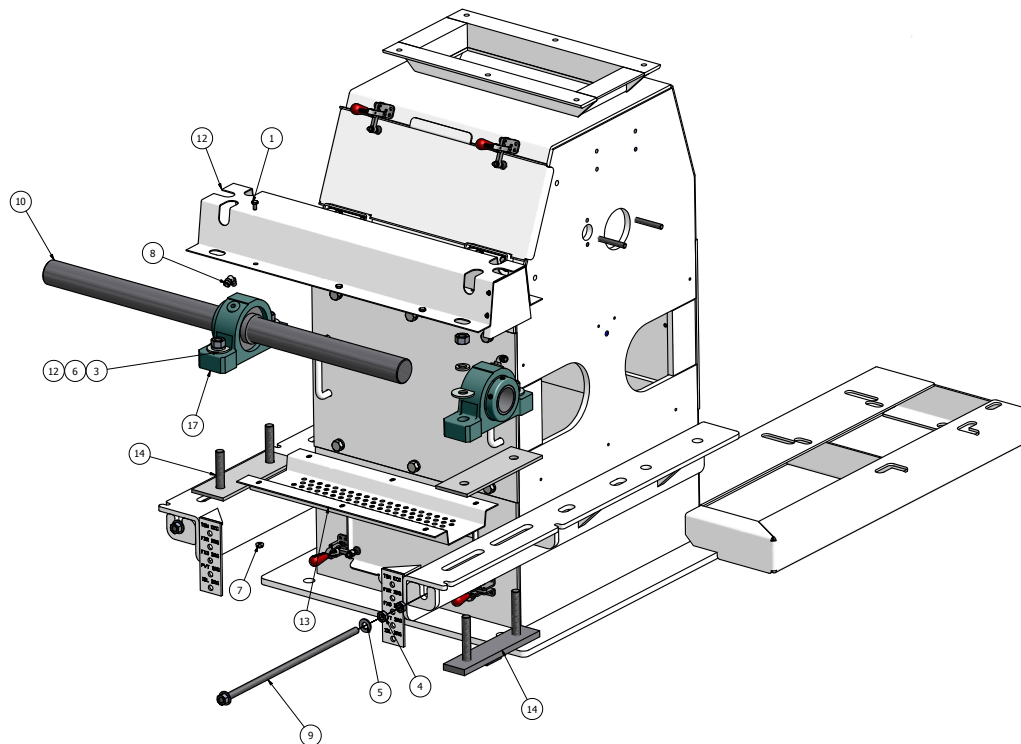
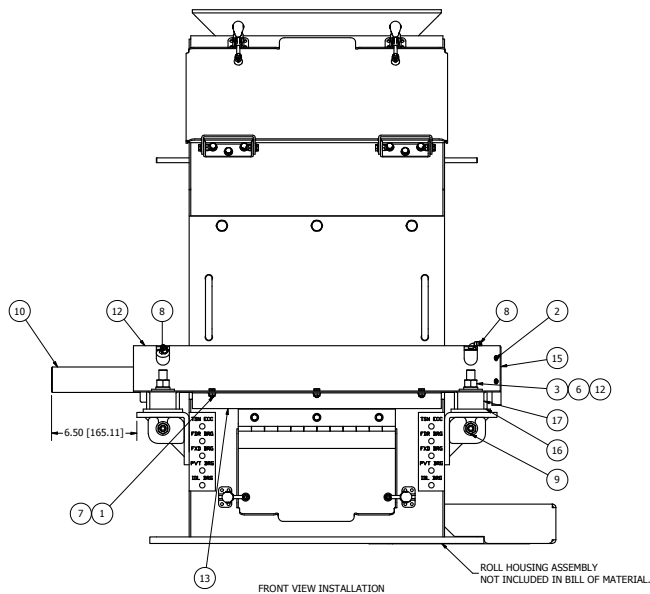


REVISION HISTORY				
REV	ECN	DESCRIPTION	DATE	APPROVED
A	K990047	RELEASED	7/9/1999	AP
B	K990063	REDRAWN IN INVENTOR, WAS D-SIZE	2/27/2009	pggalea



ITEM	PART NUMBER	QTY	DESCRIPTION
17	K902-11301	2	BRNG, PB 2 HOLE 1.938"
16	K200-10884	2	SPACER, IDLER BEARING 10/12/18"
15	K200-10655	1	END, GUARD, IDLER SHAFT 10/12"
14	K200-10580	2	SLIDE WLDMT, IDLER BEARING, 10, 12"
13	K200-01689	1	GUARD, BOTTOM, DIFF IDLER, 10 X 18"
12	K200-01672	1	GUARD, DIFF SHAFT, 10 X 18"
11	K200-01670	4	WASHER, FLAT SHEARED 5/8"
10	K200-00092	1	SHAFT, DIFFERENTIAL IDLER, 10 X 18"
9	K100-01413	2	SCREW WLDMT, IDLER BEARING, XHD 18"
8	70012050	2	CPLG, ELBOW 90 1/8-27M NPT X 1/4" TBG
7	66783300	6	NUT, HEX SERL LOCK 1/4-20
6	66448800	4	WASHER, LOCK HELICAL 5/8"
5	66405200	4	WASHER, FLAT 1/2" TYPE A
4	66105200	4	NUT, HEX JAM 1/2-13
3	66085800	4	NUT, HEX 5/8-11
2	65482212	4	SCW, MACH HX SLT HD T/C 8-32 X 1/2"
1	62583312	6	HHCS, 1/4-20 X 1/2"

NOTES:

- DO NOT SCALE FROM DRAWING.
- ONE PIECE REQUIRED PER K000-01231: ROLLER MILL ASSY, SINGLE RH RF 1.5:1, 10 X 18".
- ONE PIECE REQUIRED PER K000-01237: ROLLER MILL ASSY, SINGLE RH VF 1.5:1, 10 X 18".
- TWO PIECES REQUIRED PER K000-01257: ROLLER MILL ASSY, 2 HI RH RF 1.5:1, 10 X 18".
- FILL BEARING HOUSING WITH NLGI No. 2 GRADE LITHIUM BASED GREASE WITH AT LEAST 1000 SSU @ 100° F UNTIL GREASE RELIEFS OPEN. APPROXIMATELY 56 FL OZ (4, 14 OZ TUBES), AFTER ASSEMBLY COMPLETE.
- SEE SHEET 2 OF 2 FOR BEARING INSTALLATION DETAILS.

This drawing is the property of the A.T. Ferrell Company, Inc and must be returned immediately upon request. No part of this drawing may be reproduced, stored in a retrieval system or transmitted in any form or by any means, without prior written consent of the A.T. Ferrell Company, Inc.

CAD
NO MANUAL CHANGES

TOLERANCES EXCEPT AS NOTED:
FRACTIONS ± .005
DECIMALS ± .001
HOLE DIA ± .001
HOLE DIA ± .001

DIVISION OF A. T. FERRELL COMPANY

SCALE: 0.22:1

DRAWN BY: pggalea

APPROVED BY:

ITEM: IDLER ASSY, DIFFERENTIAL, 1.5:1, 10 X 18".

DATE: 2/26/2009

SIZE: D

PART NUMBER: K100-00455

SHEET: 1 of 1