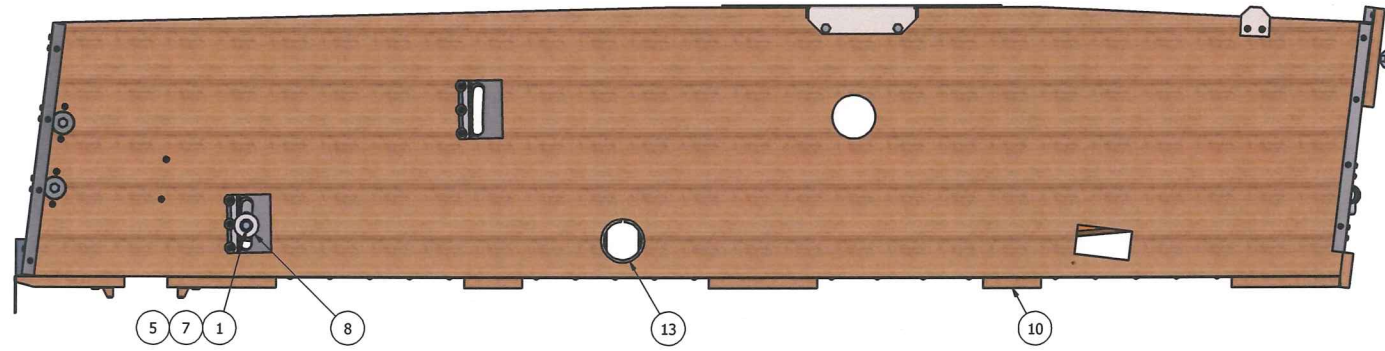
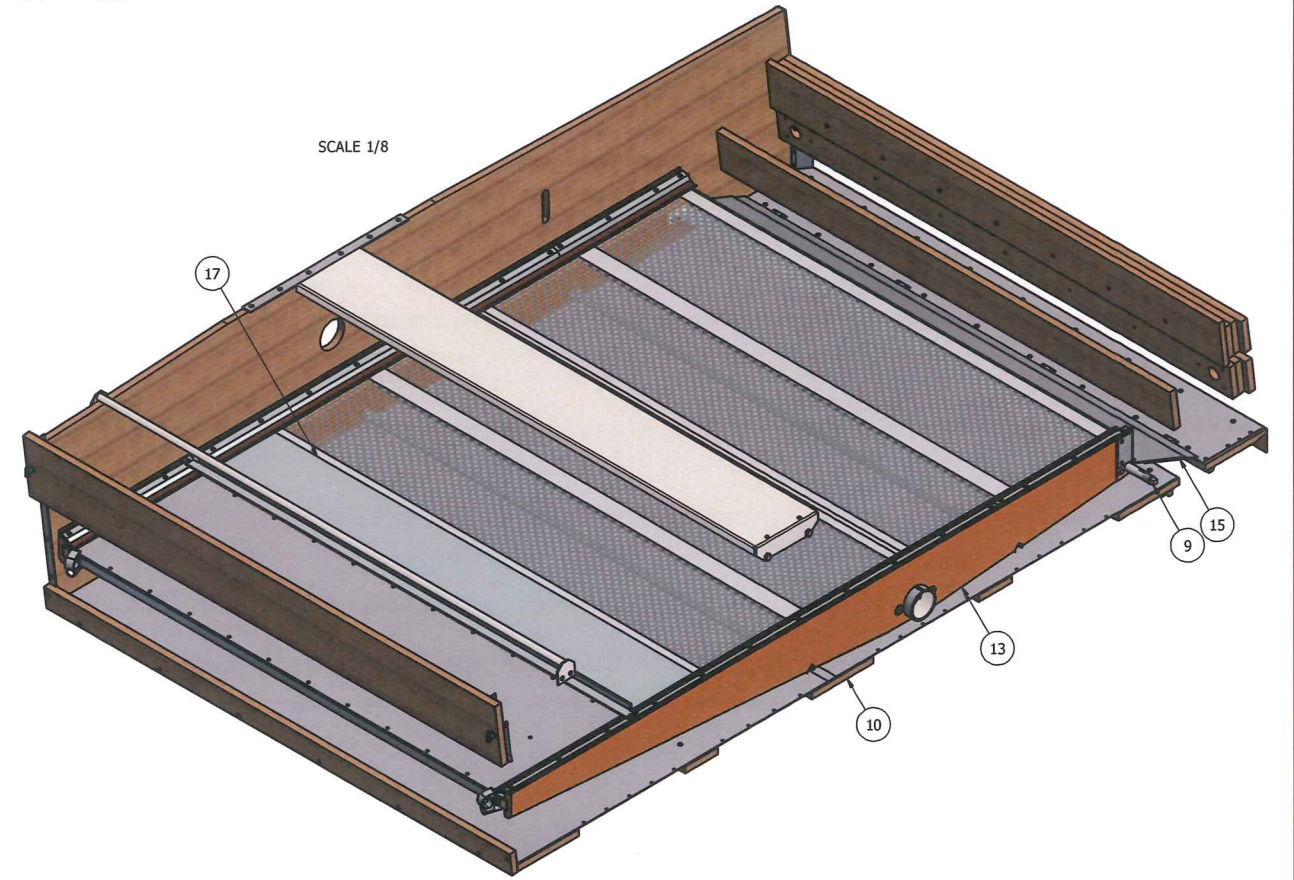


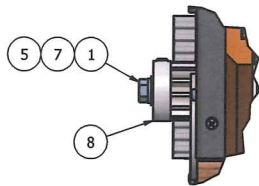
REVISION HISTORY				
REV	ECN	DESCRIPTION	DATE	APPROVED
A	XXXXXX	RELEASE	5/21/1957	DR
B	F120091	WAS GROUP DRAWING, ADD SHEETS 2 & 3	9/20/2012	dmjohnson



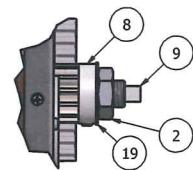
STEP 1: LEFT SIDE VIEW, LOWER ROCKER INSTALLATION



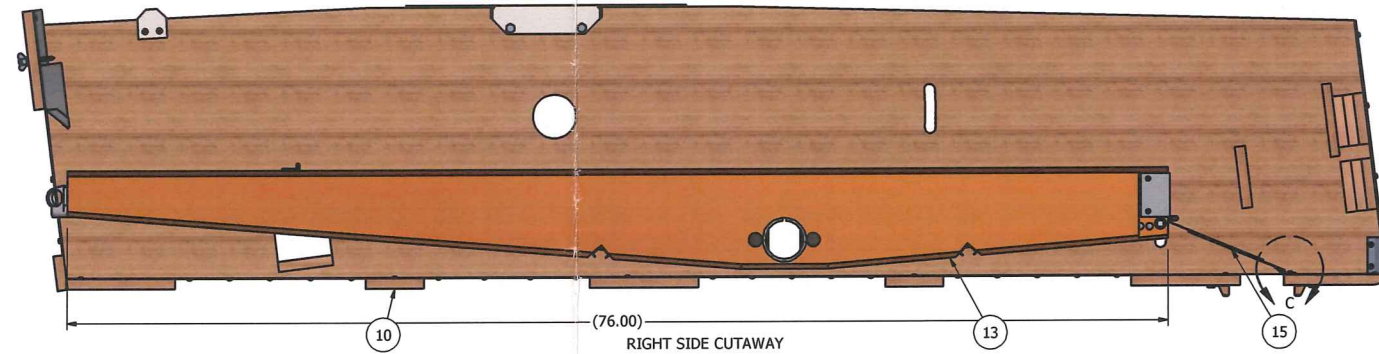
SCALE 1/8



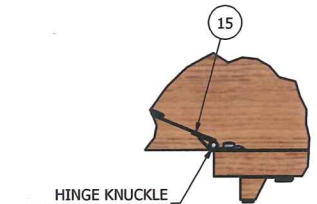
DETAIL A
SCALE 0.38 : 1



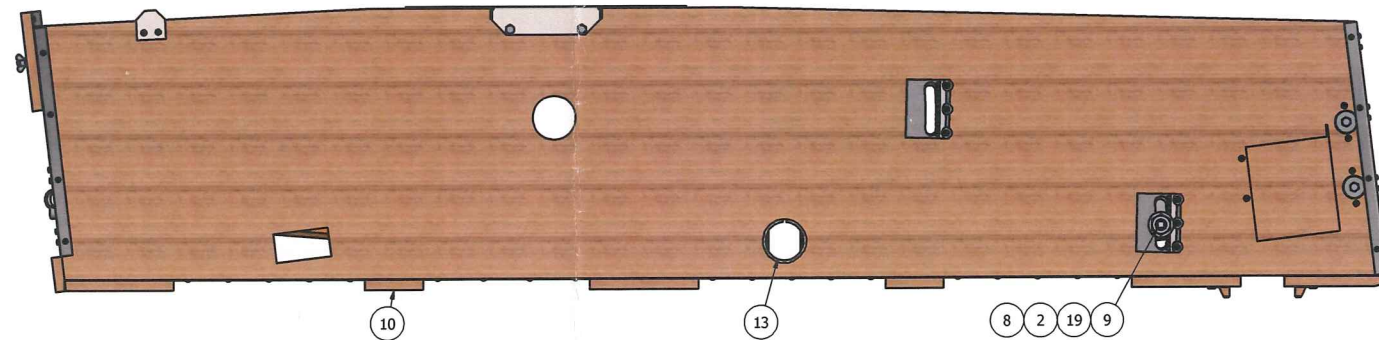
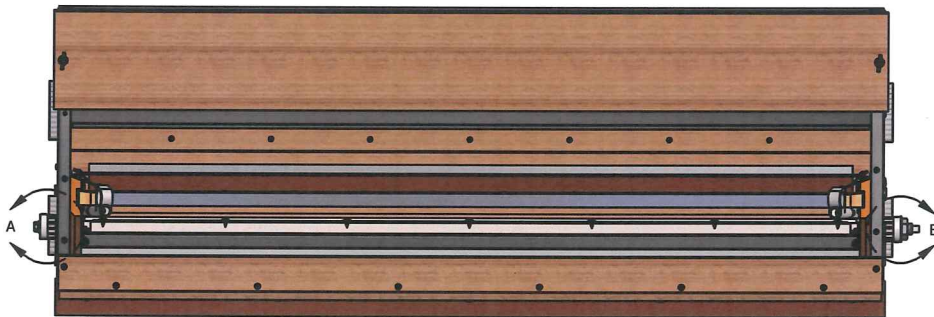
DETAIL B
SCALE 0.38 : 1



RIGHT SIDE CUTAWAY



DETAIL C
SCALE .38:1



STEP 1: RIGHT SIDE VIEW, BOTTOM ROCKER INSTALLATION

19	F84621034	2	WASHER, FLT .750 X 1.750 X .062
18	F82071401	2	STUD, DOWEL 1/4-20 X 2.50"
17	F10504400	2	FRAME ASSY, PERF SCREEN, 60" X #8
16	F08308810	1	SPOUT, RH STRAW, X298
15	F03502779	1	APRON ASSY, TELE BTM ROCKER, BTM SHOE, SX298D
14	F03502776	1	APRON ASSY, TOP ROCKER, BOTTOM SHOE, SX298D
13	F03502010	1	ROCKER ASSY, BOTTOM, BOTTOM SHOE, SX298D
12	F03501910	1	ROCKER ASSY, TOP, BOTTOM SHOE, SX298D
11	F03401700	1	APRON ASSY, 1.25 X 57.5", SEED #8
10	F03013201	1	SHOE ASSY, BOTTOM RH, SX298D
9	F01608303	2	SHAFT, TILTING ROD, 3/4 X 60.50" #8
8	F01200203	4	PINION, BRUSH ADJ. 13 TOOTH W/SET SCREWS
7	66444400	2	WASHER, LOCK HELICAL 3/8"
6	66443300	2	WASHER, LOCK HELICAL 1/4"
5	66404400	2	WASHER, FLAT 3/8" NARROW TYPE A
4	66403300	2	WASHER, FLAT, 1/4"
3	66363300	2	NUT, WING 1/4-20 TYPE B STYLE 1
2	66276400	2	NUT, HEAVY HEX JAM 3/4-10
1	62584422	2	HHCS, 3/8-16 X 1.00"

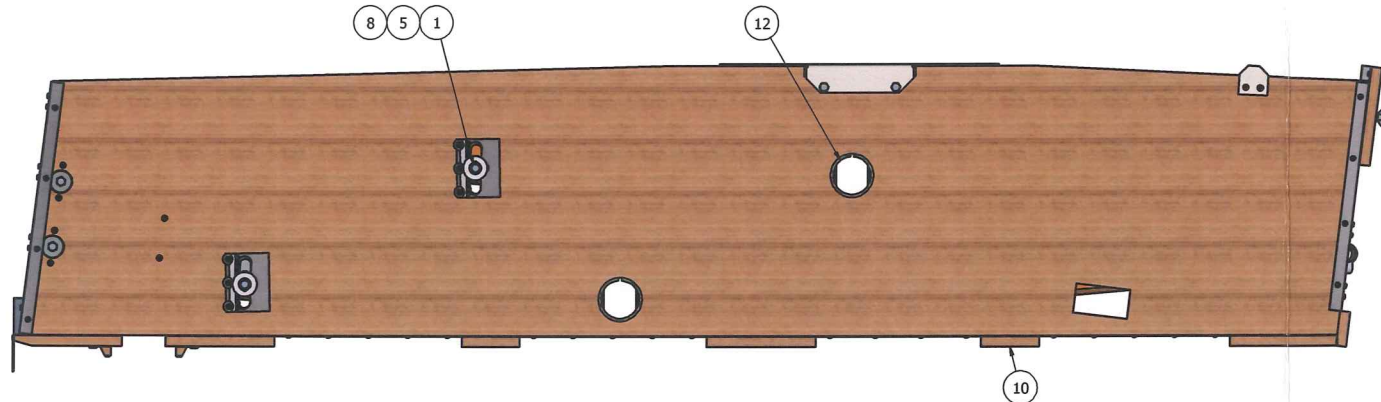
ITEM	PART NUMBER	QTY	DESCRIPTION
<p>CLIPPER SEPARATION TECHNOLOGIES SINCE 1869</p> <p>DIVISION OF A.T.FERRELL COMPANY 1440 S ADAMS ST BLUFFTON, INDIANA 46714 - USA PH: 260-824-3400 FAX: 260-824-5483</p> <p>This drawing is the property of the A.T. Ferrell Company, Inc and must be returned immediately upon request. No part of this drawing may be reproduced, stored in a retrieval system or transmitted in any form or by any means, without prior written consent of the A.T. Ferrell Company, Inc.</p> <p>DRAWN BY: dmjohnson DRAWN DATE: 9/20/2012 APPROVED BY: DMJ</p>			

- NOTES:
- DO NOT SCALE FROM DRAWING.
 - ONE PIECE REQUIRED PER F41402982: CLEANER ASSY, RH W/BRUSHES, SX298D.
 - * LINE ITEM ON SALES ORDER. NOT INCLUDED IN BILL OF MATERIAL.

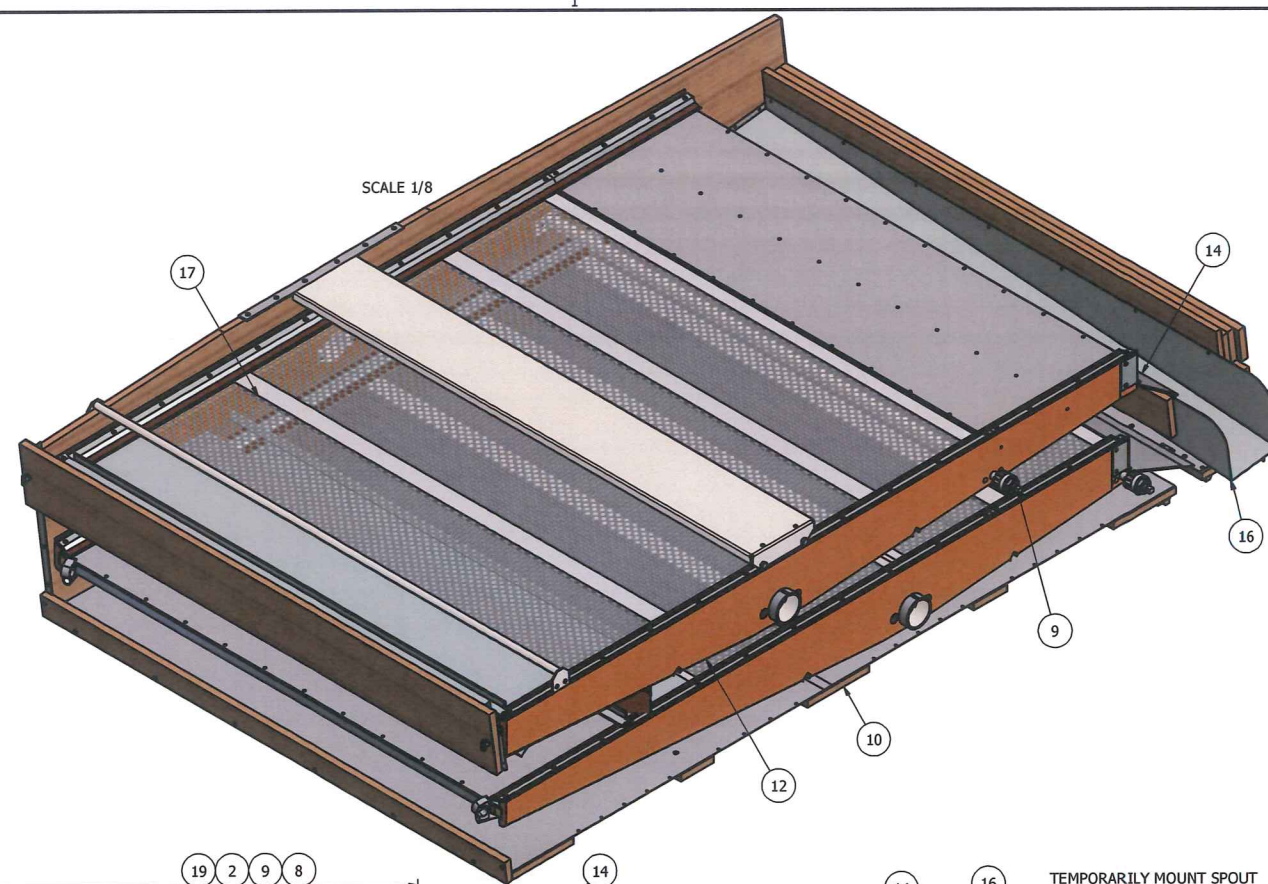
TOLERANCES EXCEPT AS NOTED		TITLE	
DECIMAL:	FRACTIONAL:	FINISH:	SHOE ASSY, RH BOTTOM W/ROCKERS, SX298D
XX ± .030	1/32	ANGULAR:	NONE
XXX ± .005	1/64	FINISH:	
XXXX ± .001	1/128	ANGULAR:	
		FINISH:	

CAD	NO MANUAL CHANGES	SCALE: 0.16:1	SHEET: 1 OF 3	SIZE: D	PART NUMBER: F03013208	REV: B
-----	-------------------	---------------	---------------	---------	------------------------	--------

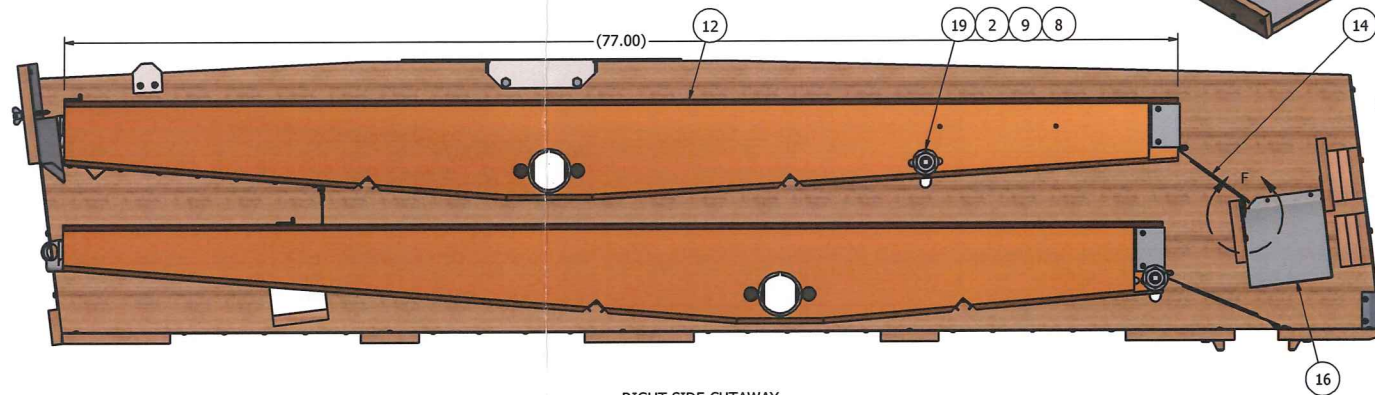
REVISION HISTORY				
REV	ECN	DESCRIPTION	DATE	APPROVED
A	XXXXXX	RELEASE	5/21/1957	DR
B	F120091	WAS GROUP DRAWING, ADD SHEETS 2 & 3	9/20/2012	dmjohnson



STEP 2: LEFT SIDE VIEW, UPPER ROCKER INSTALLATION



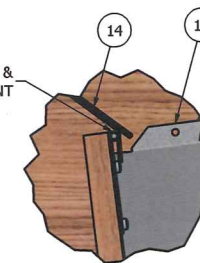
SCALE 1/8



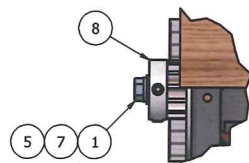
RIGHT SIDE CUTAWAY

TEMPORARILY MOUNT SPOUT IN PLACE. LOCATE & DRILL APRON HINGE HOLES THRU SPOUT. REMOVE SPOUT. APRON & SPOUT INSTALLED AFTER SHOE INSTALLED IN FRAME.

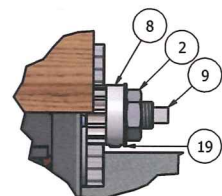
SPOUT EDGE FLUSH & HINGE KNUCKLE TANGENT



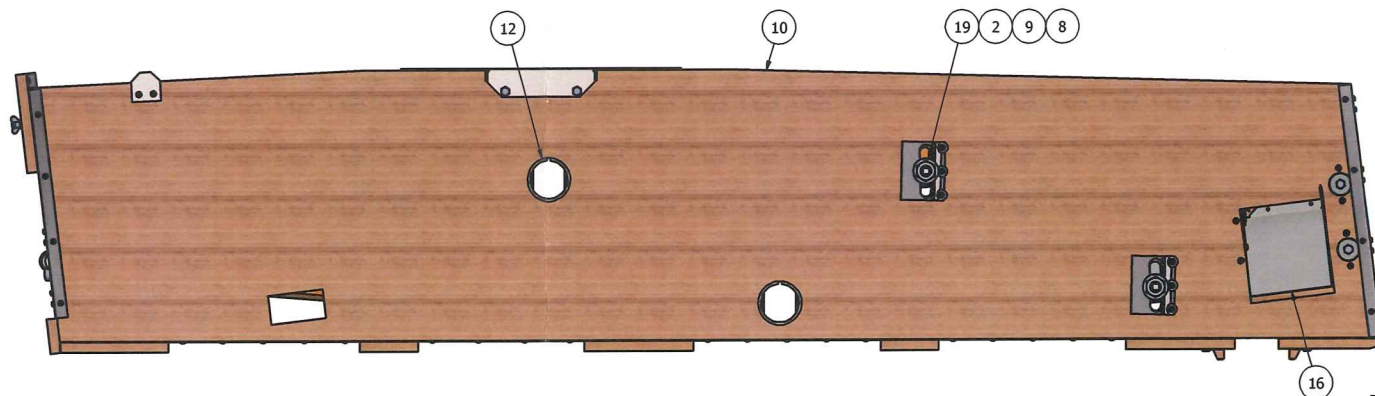
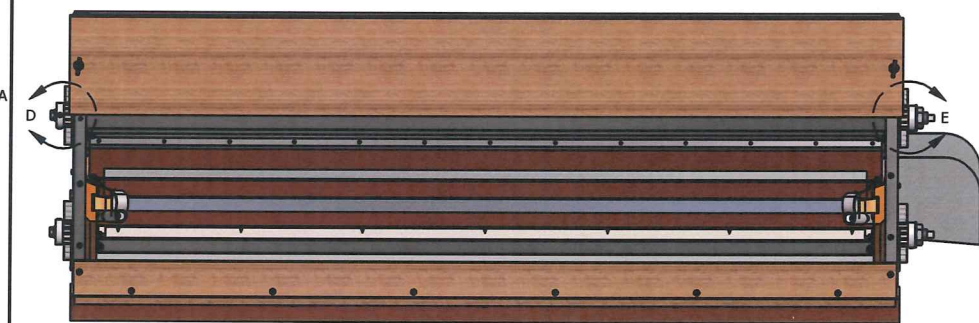
DETAIL F
SCALE 0.38 : 1



DETAIL D
SCALE 0.38 : 1



DETAIL E
SCALE 0.38 : 1



STEP 2: RIGHT SIDE VIEW, UPPER ROCKER INSTALLATION

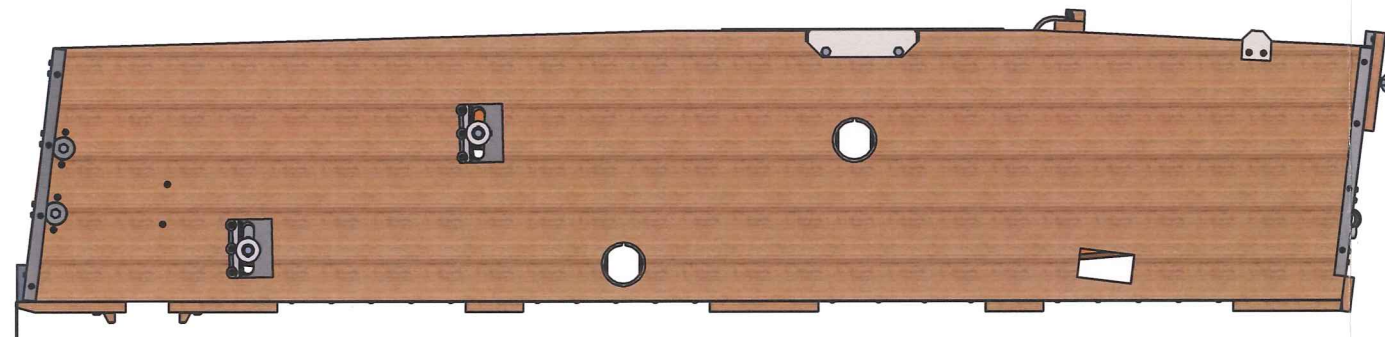
19	F84621034	2	WASHER, FLT .750 X 1.750 X .062
18	F82071401	2	STUD, DOWEL 1/4-20 X 2.50"
17	F10504400	2	FRAME ASSY, PERF SCREEN, 60" X #8
16	F08308810	1	SPOUT, RH STRAW, X298
15	F03502779	1	APRON ASSY, TELE BTM ROCKER, BTM SHOE, SX298D
14	F03502776	1	APRON ASSY, TOP ROCKER, BOTTOM SHOE, SX298D
13	F03502010	1	ROCKER ASSY, BOTTOM, BOTTOM SHOE, SX298D
12	F03501910	1	ROCKER ASSY, TOP, BOTTOM SHOE, SX298D
11	F03401700	1	APRON ASSY, 1.25 X 57.5", SEED #8
10	F03013201	1	SHOE ASSY, BOTTOM RH, SX298D
9	F01608303	2	SHAFT, TILTING ROD, 3/4 X 60.50" #8
8	F01200203	4	PINION, BRUSH ADJ. 13 TOOTH W/SET SCREWS
7	66444400	2	WASHER, LOCK HELICAL 3/8"
6	66443300	2	WASHER, LOCK HELICAL 1/4"
5	66404400	2	WASHER, FLAT 3/8" NARROW TYPE A
4	66403300	2	WASHER, FLAT, 1/4"
3	66363300	2	NUT, WING 1/4-20 TYPE B STYLE 1
2	66276400	2	NUT, HEAVY HEX JAM 3/4-10
1	62584422	2	HHCS, 3/8-16 X 1.00"

ITEM	PART NUMBER	QTY	DESCRIPTION
DIVISION OF CLIPPER A.T.FERRELL COMPANY 1440 S ADAMS ST BLUFFTON, INDIANA 46714 - USA PH: 280-824-3400 FAX: 280-824-5463			
This drawing is the property of the A.T. Ferrell Company, Inc and must be returned immediately upon request. No part of this drawing may be reproduced, stored in a retrieval system or transmitted in any form or by any means, without prior written consent of the A.T. Ferrell Company, Inc.			
DRAWN BY: dmjohnson		APPROVED BY: DMJ	
DRAWN DATE: 9/20/2012			

TOLERANCES EXCEPT AS NOTED		TITLE: SHOE ASSY, RH BOTTOM W/ROCKERS, SX298D	
DECIMAL:	FRACTIONAL:		
XX ± .001	1/32		
XXX ± .005	ANGULAR:	FINISH: NONE	
XXXX ± .01	± 1/2"		
CAD	NO MANUAL CHANGES	SCALE: 0.16:1	SHEET: 2 OF 3
		SIZE: D	PART NUMBER: F03013208
		REV: B	

- NOTES:
 1. DO NOT SCALE FROM DRAWING.
 2. ONE PIECE REQUIRED PER F41402982: CLEANER ASSY, RH W/BRUSHES, SX298D.
 3. * LINE ITEM ON SALES ORDER. NOT INCLUDED IN BILL OF MATERIAL.

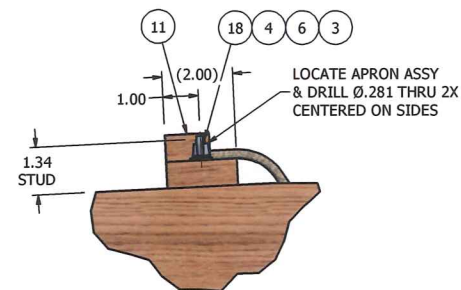
REVISION HISTORY				
REV	ECN	DESCRIPTION	DATE	APPROVED
A	XXXXXX	RELEASE	5/21/1957	DR
B	F120091	WAS GROUP DRAWING, ADD SHEETS 2 & 3	9/20/2012	dmjohson



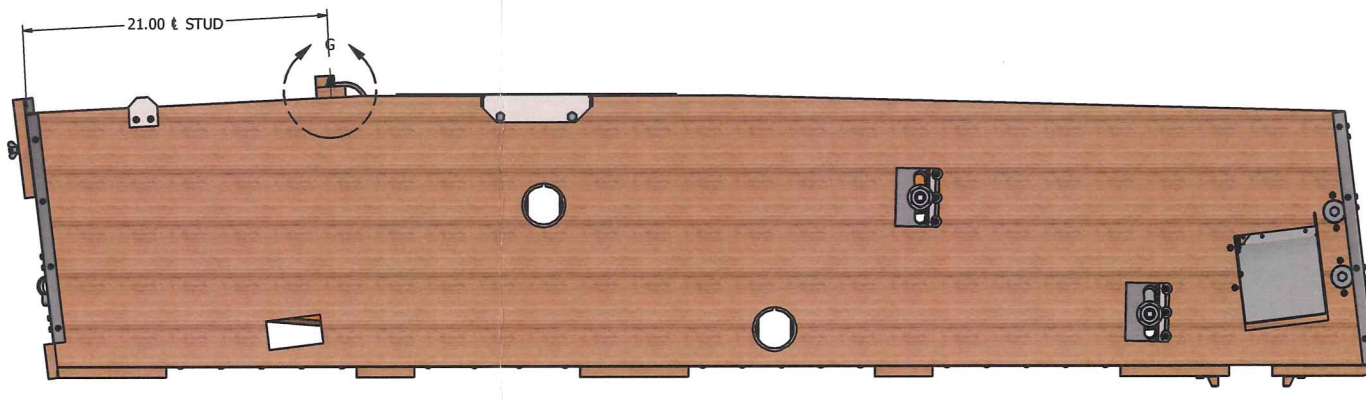
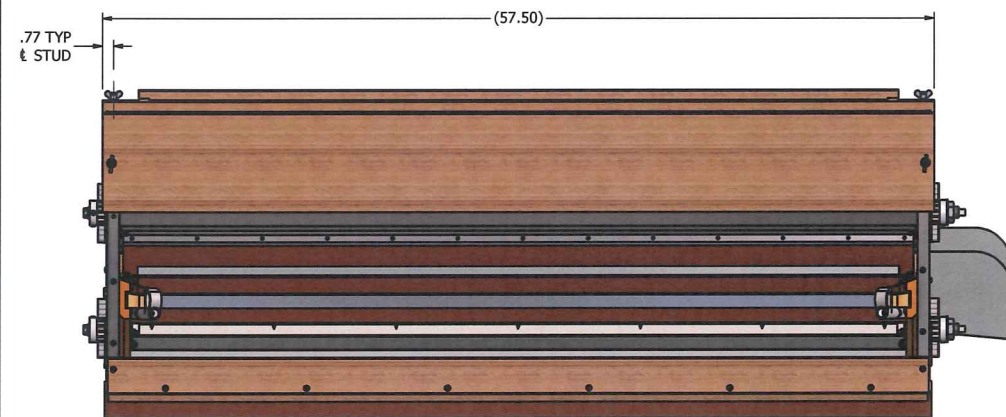
STEP 3: LEFT SIDE VIEW, COMPLETE



SCALE 1/8



DETAIL G
SCALE 0.38 : 1



STEP 3: RIGHT SIDE VIEW, COMPLETE

19	F84621034	2	WASHER, FLT .750 X 1.750 X .062
18	F82071401	2	STUD, DOWEL 1/4-20 X 2.50"
17	F10504400	2	FRAME ASSY, PERF SCREEN, 60" X #8
16	F08308810	1	SPOUT, RH STRAW, X298
15	F03502779	1	APRON ASSY, TELE BTM ROCKER, BTM SHOE, SX298D
14	F03502776	1	APRON ASSY, TOP ROCKER, BOTTOM SHOE, SX298D
13	F03502010	1	ROCKER ASSY, BOTTOM, BOTTOM SHOE, SX298D
12	F03501910	1	ROCKER ASSY, TOP, BOTTOM SHOE, SX298D
11	F03401700	1	APRON ASSY, 1.25 X 57.5", SEED #8
10	F03013201	1	SHOE ASSY, BOTTOM RH, SX298D
9	F01608303	2	SHAFT, TILTING ROD, 3/4 X 60.50" #8
8	F01200203	4	PINION, BRUSH ADJ. 13 TOOTH W/SET SCREWS
7	66444400	2	WASHER, LOCK HELICAL 3/8"
6	66443300	2	WASHER, LOCK HELICAL 1/4"
5	66404400	2	WASHER, FLAT 3/8" NARROW TYPE A
4	66403300	2	WASHER, FLAT, 1/4"
3	66363300	2	NUT, WING 1/4-20 TYPE B STYLE 1
2	66276400	2	NUT, HEAVY HEX JAM 3/4-10
1	62584422	2	HHCS, 3/8-16 X 1.00"

- NOTES:
- DO NOT SCALE FROM DRAWING.
 - ONE PIECE REQUIRED PER F41402982: CLEANER ASSY, RH W/BRUSHES, SX298D.
 - * LINE ITEM ON SALES ORDER. NOT INCLUDED IN BILL OF MATERIAL.

		DIVISION OF A.T.FERRELL COMPANY 1440 S ADAMS ST BLUFFTON, INDIANA 46714 - USA PH: 280-824-3400 FAX: 280-824-5463		This drawing is the property of the A.T. Ferrell Company, Inc and must be returned immediately upon request. No part of this drawing may be reproduced, stored in a retrieval system or transmitted in any form or by any means, without prior written consent of the A.T. Ferrell Company, Inc.	
TOLERANCES EXCEPT AS NOTED: DECIMAL: XX ± .030 XXX ± .005 XXXX ± .001		FRACTIONAL: ± 1/32 ANGLAR: ± 1/2°		TITLE: SHOE ASSY, RH BOTTOM W/ROCKERS, SX298D FINISH: NONE SCALE: 0.16:1 SHEET: 3 OF 3 SIZE: D PART NUMBER: F03013208 REV: B	
DRAWN BY: dmjohson DRAWN DATE: 9/20/2012 APPROVED BY: DMJ		CAD NO MANUAL CHANGES			