

SERVICE MANUAL
AND
PARTS CATALOG
FOR YOUR
SUPER 498A



Grain, Seed and Bean Cleaners

SUPER 498A CLEANER PARTS SET UP WITH BRUSH SCREEN CLEANING

BRUSH SCREEN CLEANING SYSTEM

ITEM NO.	PAGE NO.	PART NUMBER	QTY.	DESCRIPTION
39	7	F01003001	2	Brush Adjusters-Control Side / Left Hand Side(Includes Parts Below)
	7	F01106101	1	Brush Idler Plate Left Hand
42	7	F01105400	1	Adjustments Handle with Spring
42	7	F82080060	1	Shoulder Bolt for Brush Adjuster
38	7	F01004902	2	Brush Adjusters - Idler Side / Right Hand Side(Includes Parts Below)
	7	F01106104	1	Brush Adjusting Plate Right Hand
43	7	F01106300	1	Idler Arm Support
43	7	F82080060	1	Shoulder Bolt for Brush Adjuster
39	7	F01003002	2	Brush Adjusters-Control Side / Right Hand Side(Includes Parts Below)
**	7	F01106003	1	Brush Idler Plate Right Hand
42	7	F01105400	1	Adjustments Handle with Spring
42	7	F82080060	1	Shoulder Bolt for Brush Adjuster
38	7	F01004901	2	Brush Adjusters - Idler Side / Left Hand Side (Includes Parts Below)
		F01106001	1	Brush Adjusting Plate Left Hand
43	7	F01106300	1	Idler Arm Support
43	7	F82080060	1	Shoulder Bolt for Brush Adjuster
		F01000200	8	Rope Sheave Assembly Complete See attached picture
		F09501900	2	Brush Carrier Assembly 25" x 46" See attached picture 10
		F01612102	2	Brush Carrier Shafts 1-3/16" x 64"
		F97700063	40	Wirelon Plastic Coated Steel Cable (In Feet)

BOTTOM FAN ASSEMBLY

ITEM NO.	PAGE NO.	PART NUMBER	QTY.	DESCRIPTION
		F01615901	1	Fan Shaft 1-1/2" X 79" (Includes Keys) See attached picture 11 & 12
		Not Available	2	6715 Halfmoon Bridgetree Housing with Bearing
		F92400022	2	Bearing <u>Insert Only</u> for Above
		Note: If housing is bad Items below must be substituted		
		F92401080	2	1-1/2" Pillow Block Bearing
		F02707300	2	Bridgetree Mounting Angle for Bearing
201	25	F06302030	1	Bottom Drum Iron 57-5/8" x 80"
203	25	F06302130	1	Discharge Chute 4"
204	25	F06304304	1	Breast Iron 57-5/8" x 26-1/2"

ECCENTRIC SHAFT ASSEMBLY

ITEM NO.	PAGE NO.	PART NUMBER	QTY.	DESCRIPTION
		F01611900	1	Eccentric Shaft 1-1/2" X 78-1/2" (Includes Keys) See attached pictures 15 & 16
		Not Available	2	6714 Halfmoon Flange Bearing
		F92400022	1	1-1/2" Bearing <u>Insert Only</u> for Below
		F92053126	1	6714 Flange Bearing Conversion Kit
		Not Available	1	7475 1-1/2" Halfmoon Bearing Complete w/Bearing
		F92400026	1	1-1/2" Halfmoon Bearing <u>Insert Only</u> for Above
		F19503600	2	1-1/2" Throw Eccentric Assembly Complete See attached picture 15B

NOTE: A FEW OF THE NEWER MACHINES HAD COUNTERWEIGHTS ADDED TO THE ECCENTRIC SHAFT

F01104600	4	Counterweight Ends
F01804405	2	Counterweight 16-1/2"

MAIN SHOE ASSEMBLY

ITEM NO.	PAGE NO.	PART NUMBER	QTY.	DESCRIPTION
		Not Available	1	Bottom Shoe Complete with Rockers Right Hand (F03006102) See attached drawing
		F03500400	1	Apron Assembly
		F08-----	1	Sand Spout Left Hand Machines (Check Measurements)
		F08-----	1	Sand Spout Right Hand Machines (Check Measurements)
		F08-----	1	Straw Spout Left Hand Machines (Check Measurements)
		F08-----	1	Straw Spout Right Hand Machines (Check Measurements)
			2	Rocker adjusting system See attached picture
		F03500210	1	Top Rocker Assembly Complete See attached drawing
		F03500310	1	Bottom Rocker Assembly Complete See attached drawing
		F03016510	2	Front Hanger with Block on Both Sides
		F03102601	2	Shoeside Hanger Support Block
		F03016520	3	Back Shoe Hanger with Block

**Discharge Spouts are Determined by Standing at the Front and Facing the Machine.
Right Hand Discharge Spouts Would Discharge Towards Your Right Hand.**

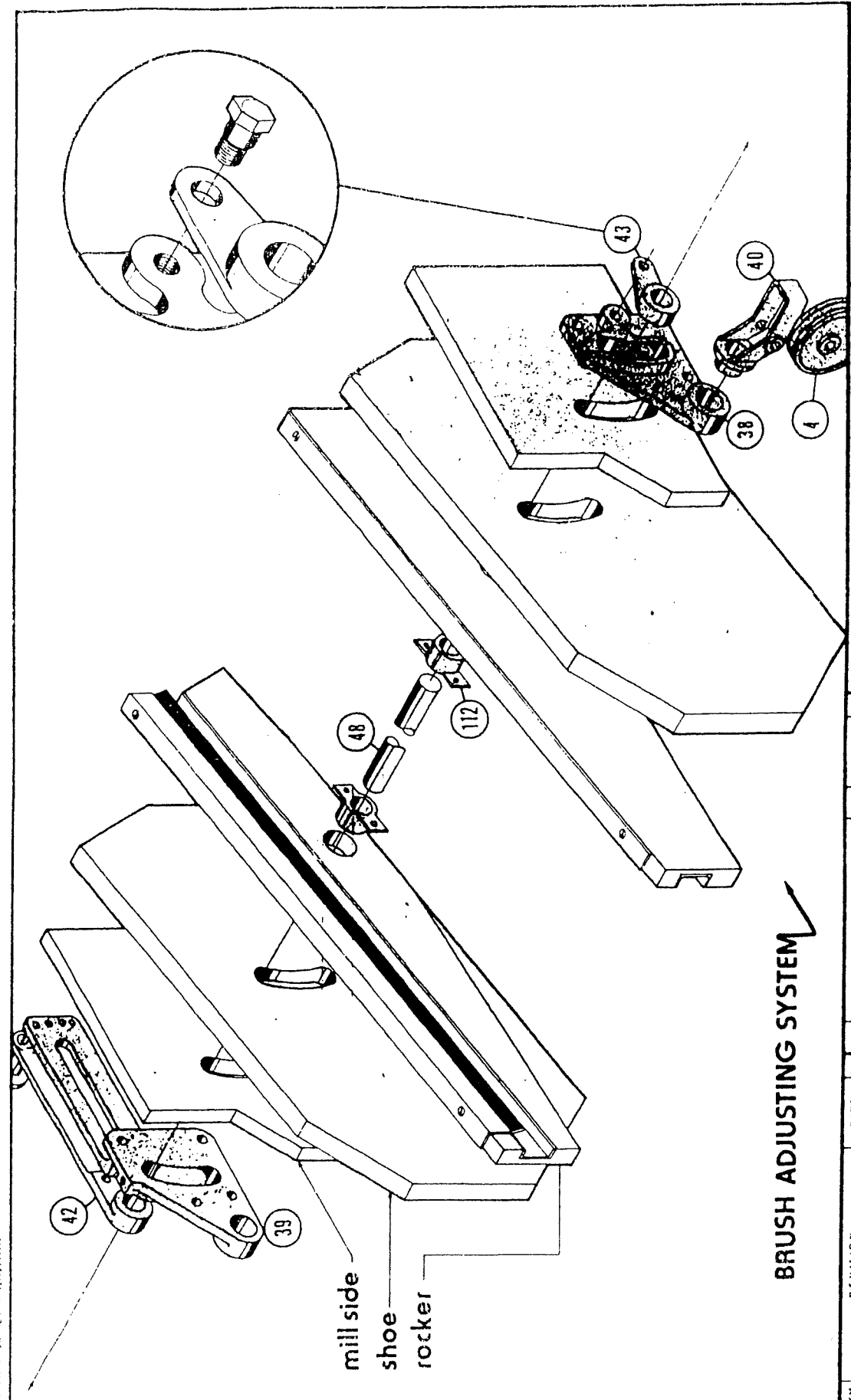
F01002803 1 Single Belt Idler Assembly Complete 5-1/2"
See attached drawing

**The Following Are the Ball Tray Kit Parts That were
Installed on the Super 498 Cleaners in the Past**

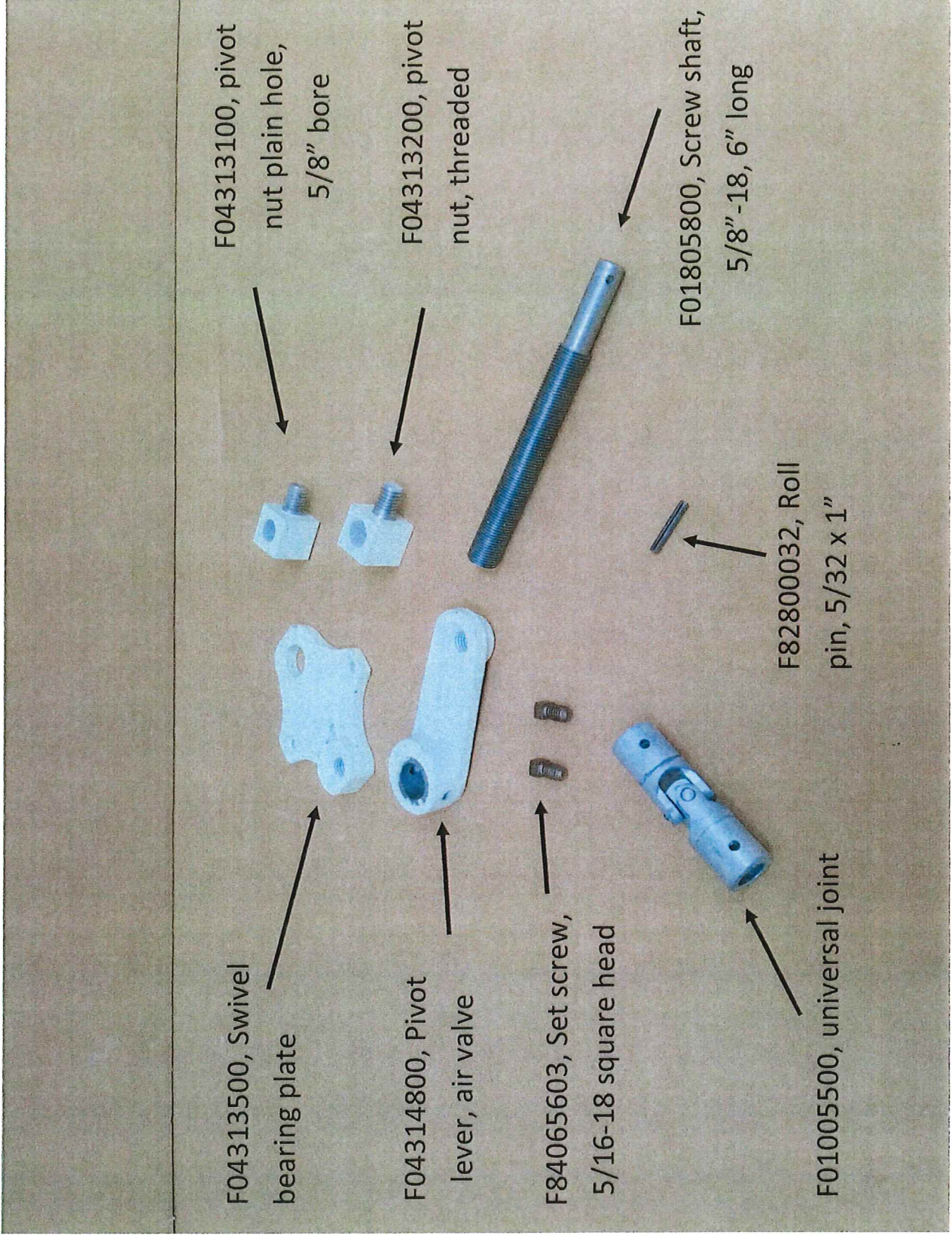
**Old Style Ball Trays with 1" Square Turkey Wire That Came Out
With the Screens. Ball Trays were not attached to the Screens.**

F90005061	2	Ball Tray Weldment for 1 Piece Screens (NEW PUNCHED STYLE)
F80026102	288	White 1-3/8" Balls
		or
F90005057	2	Ball Tray Weldment for 2 Piece Screens (Bottom 26" Section) (NEW PUNCHED STYLE)
F90005068	2	Ball Tray Weldment for 2 Piece Screens (For Top 34" Section) (NEW PUNCHED STYLE)
F80026102	288	White 1-3/8" Balls (54 Per Tray)
F11301707	4	Ball Tray Support Rail 24"
F11301708	4	Ball Tray Support Rail 31"

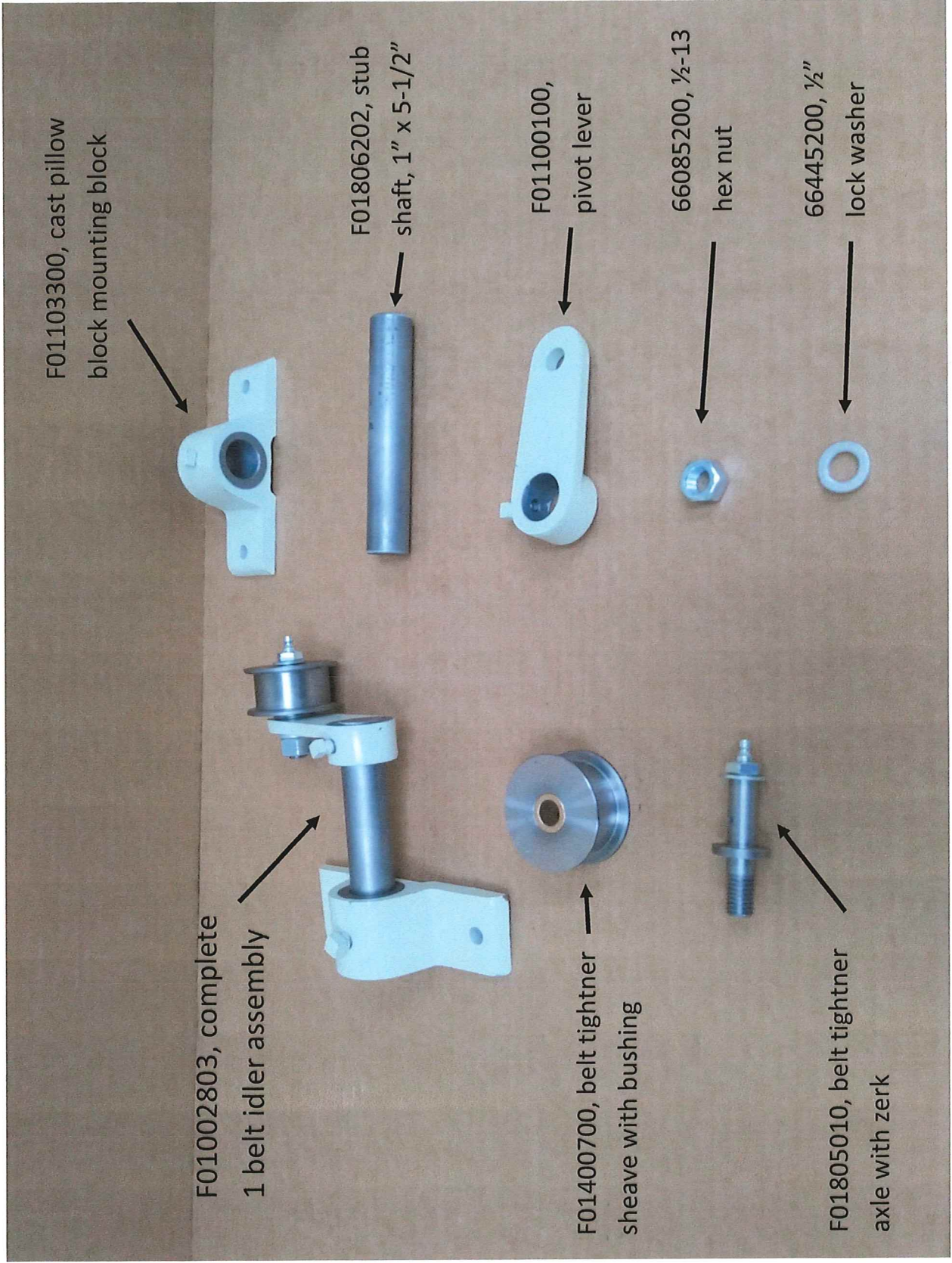
PLANT PRINT SUPPLY, WOODS LAKE, TEXAS



REV.	REVISION	DATE	DRN.	SCALE	DATE	FERRELL - ROSS	
						SAGINAW, MICH.	
brush adjusting system						MACH. NO.	
						DWG. NO.	



F01013500, Gate valve adjusting assembly, ALL



F01103300, cast pillow block mounting block

F01806202, stub shaft, 1" x 5-1/2"

F01100100, pivot lever

66085200, 1/2-13 hex nut

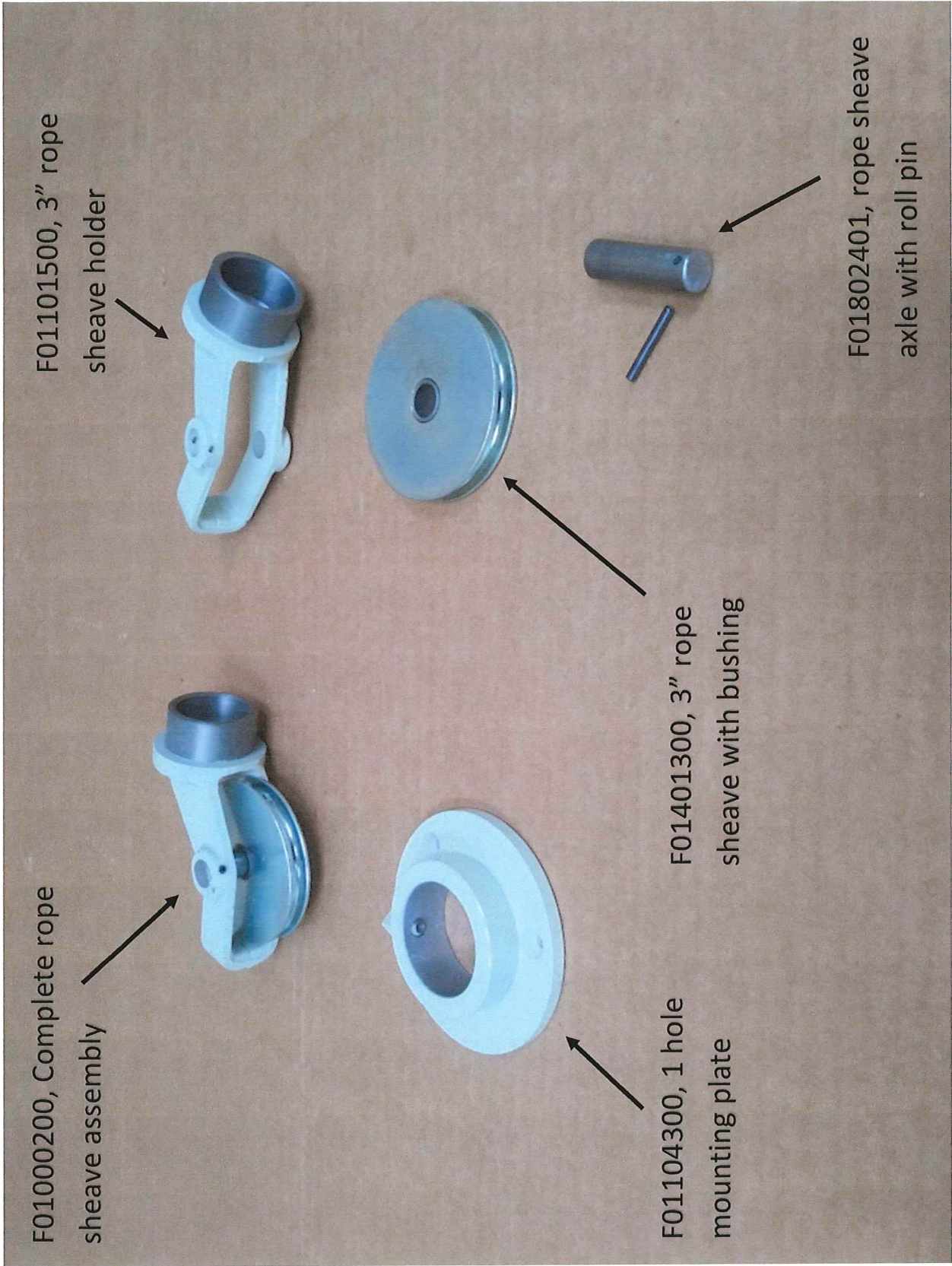
66445200, 1/2" lock washer

F01002803, complete 1 belt idler assembly

F01400700, belt tightener sheave with bushing

F01805010, belt tightener axle with zerck

Belt tightener assembly



F01000200, Complete rope sheave assembly

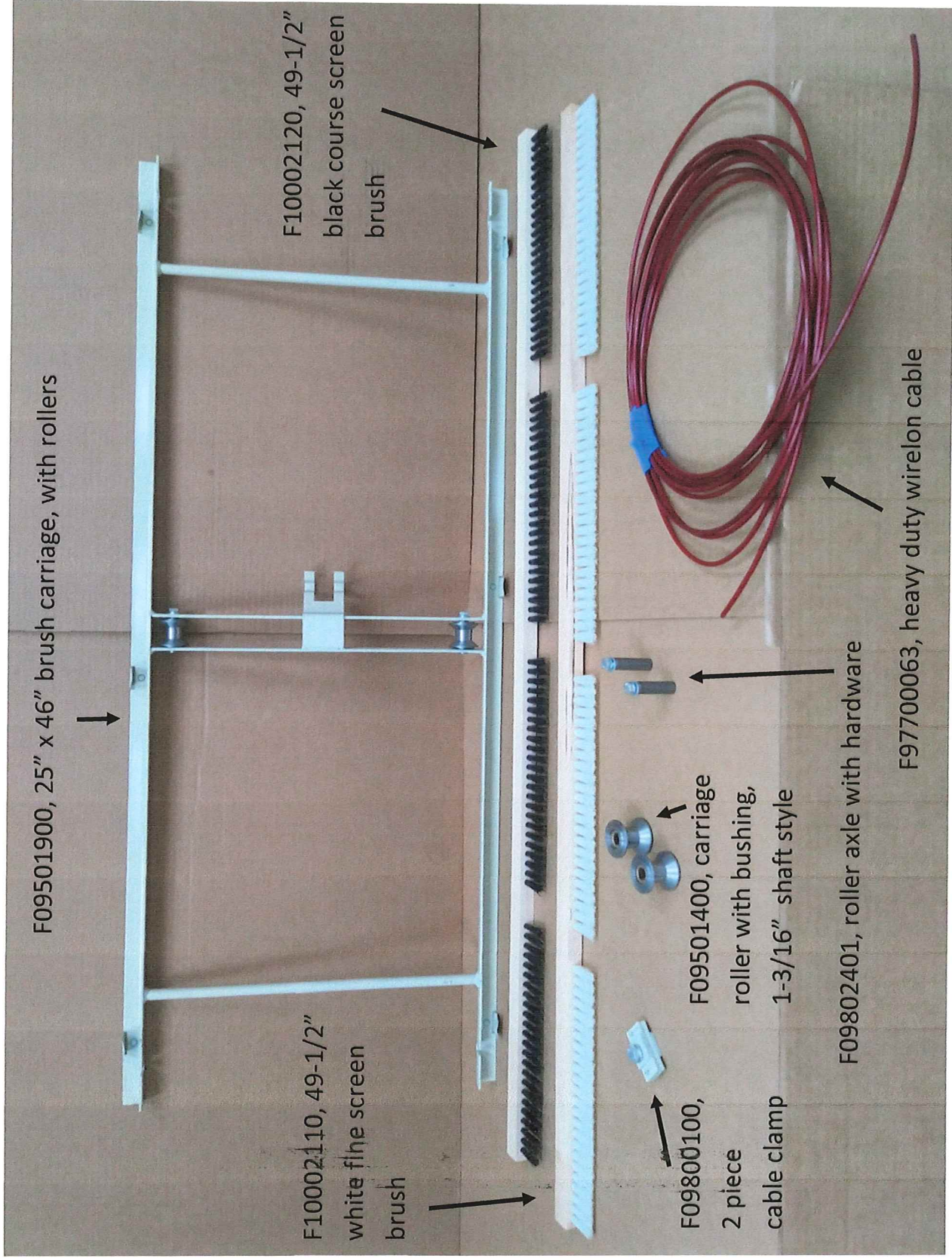
F01101500, 3" rope sheave holder

F01104300, 1 hole mounting plate

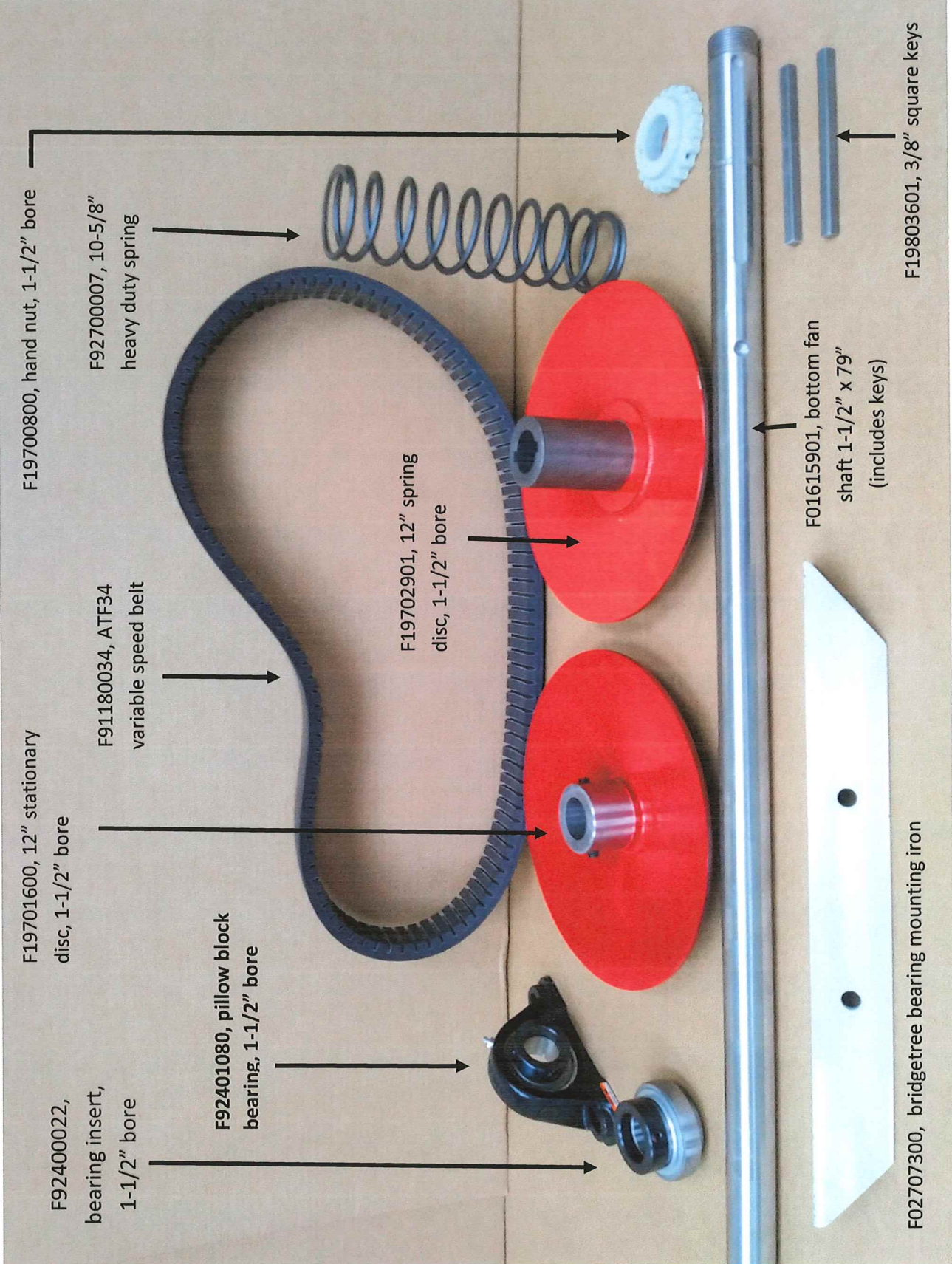
F01401300, 3" rope sheave with bushing

F01802401, rope sheave axle with roll pin

3" Rope sheave assembly



Brush carriage, with accessories, page 10



F19700800, hand nut, 1-1/2" bore

F92700007, 10-5/8" heavy duty spring

F19701600, 12" stationary disc, 1-1/2" bore

F91180034, ATF34 variable speed belt

F19702901, 12" spring disc, 1-1/2" bore

F92400022, bearing insert, 1-1/2" bore

F92401080, pillow block bearing, 1-1/2" bore

F01615901, bottom fan shaft 1-1/2" x 79" (includes keys)

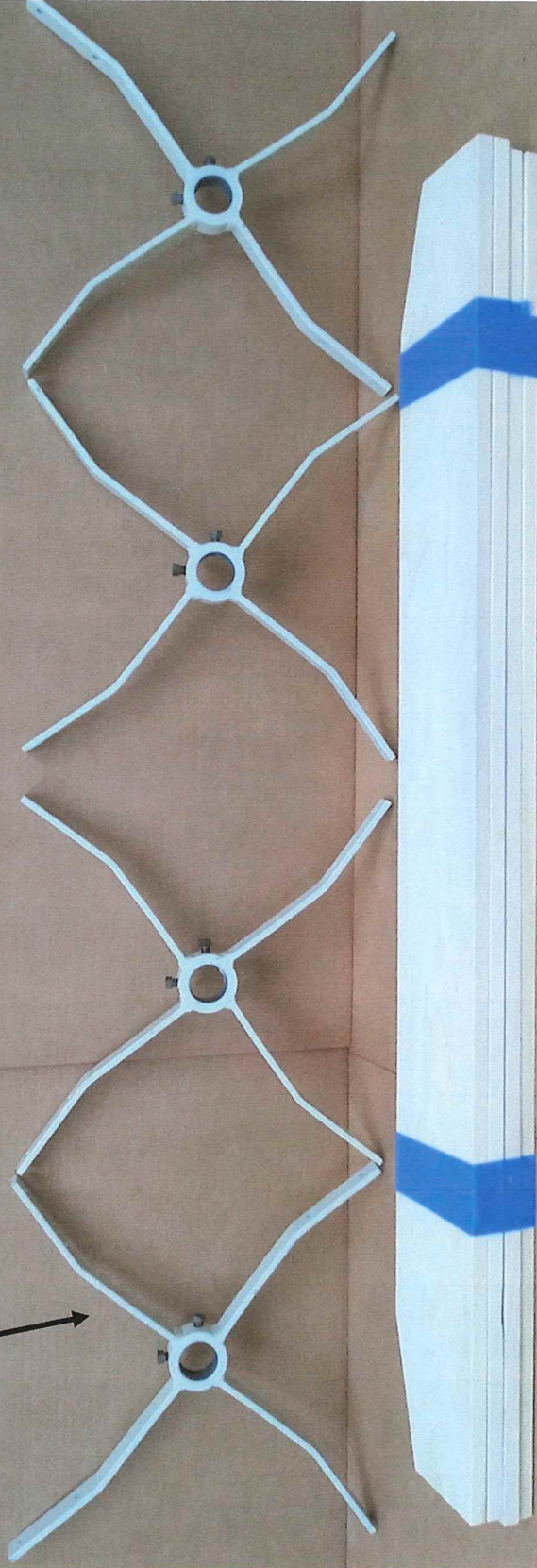
F02707300, bridgetree bearing mounting iron

F19803601, 3/8" square keys

Bottom fan shaft assembly, page 11

4 pieces, F06001000, bottom fan spider, 1-1/2" bore

F06002778, complete bottom fan assembly



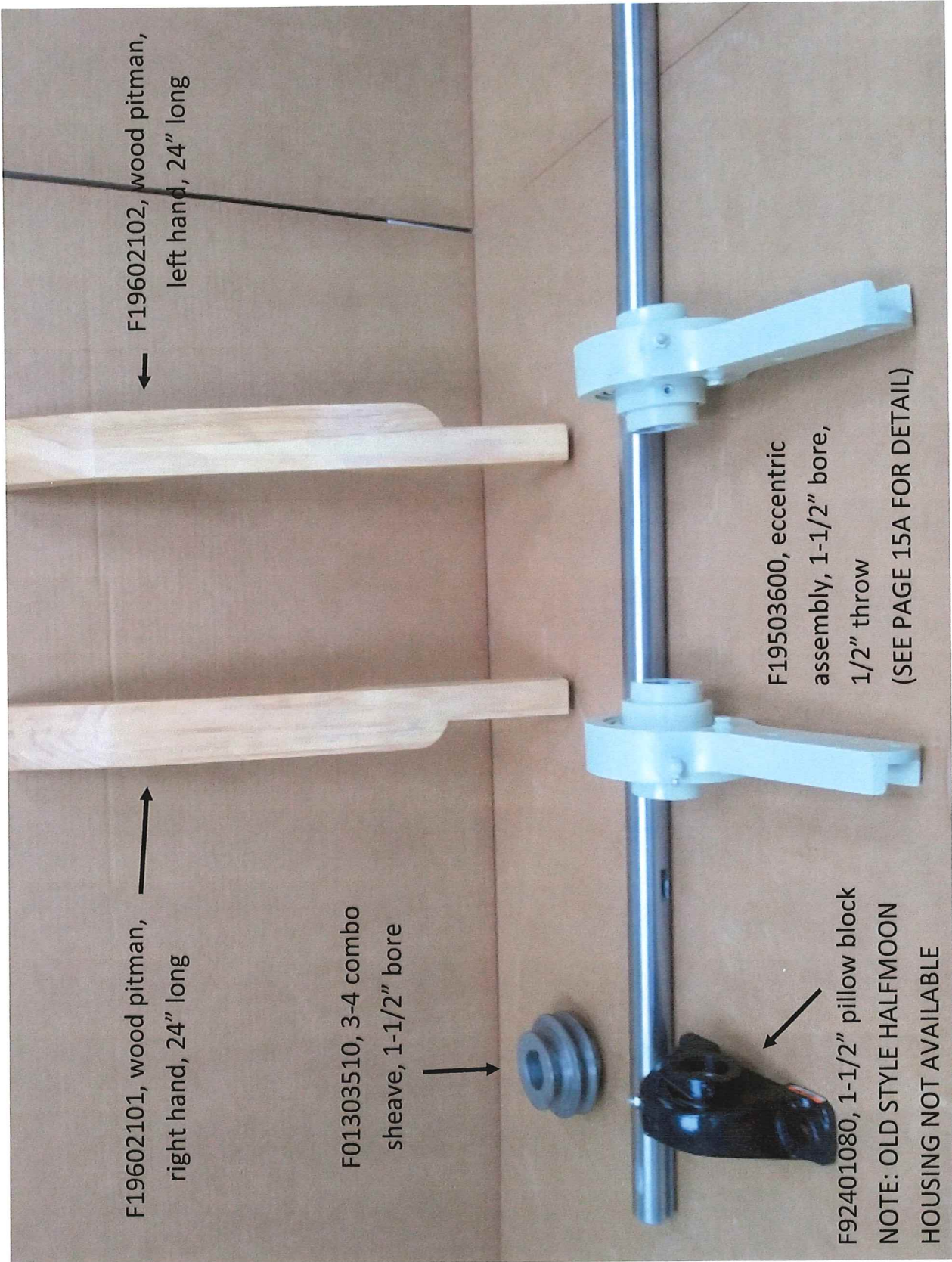
4 pieces, F01701101, bottom fan blade, 55-5/8" long

32 pieces, F82021407, elevator bolt, 1/4-20 x 1-1/4"

32 pieces, 66083300, 1/4-20 hex nut

32 pieces, 66443300, 1/4" lock washer

Bottom fan assembly, 1-1/2" shaft, page 12



F19602101, wood pitman, right hand, 24" long

F19602102, wood pitman, left hand, 24" long

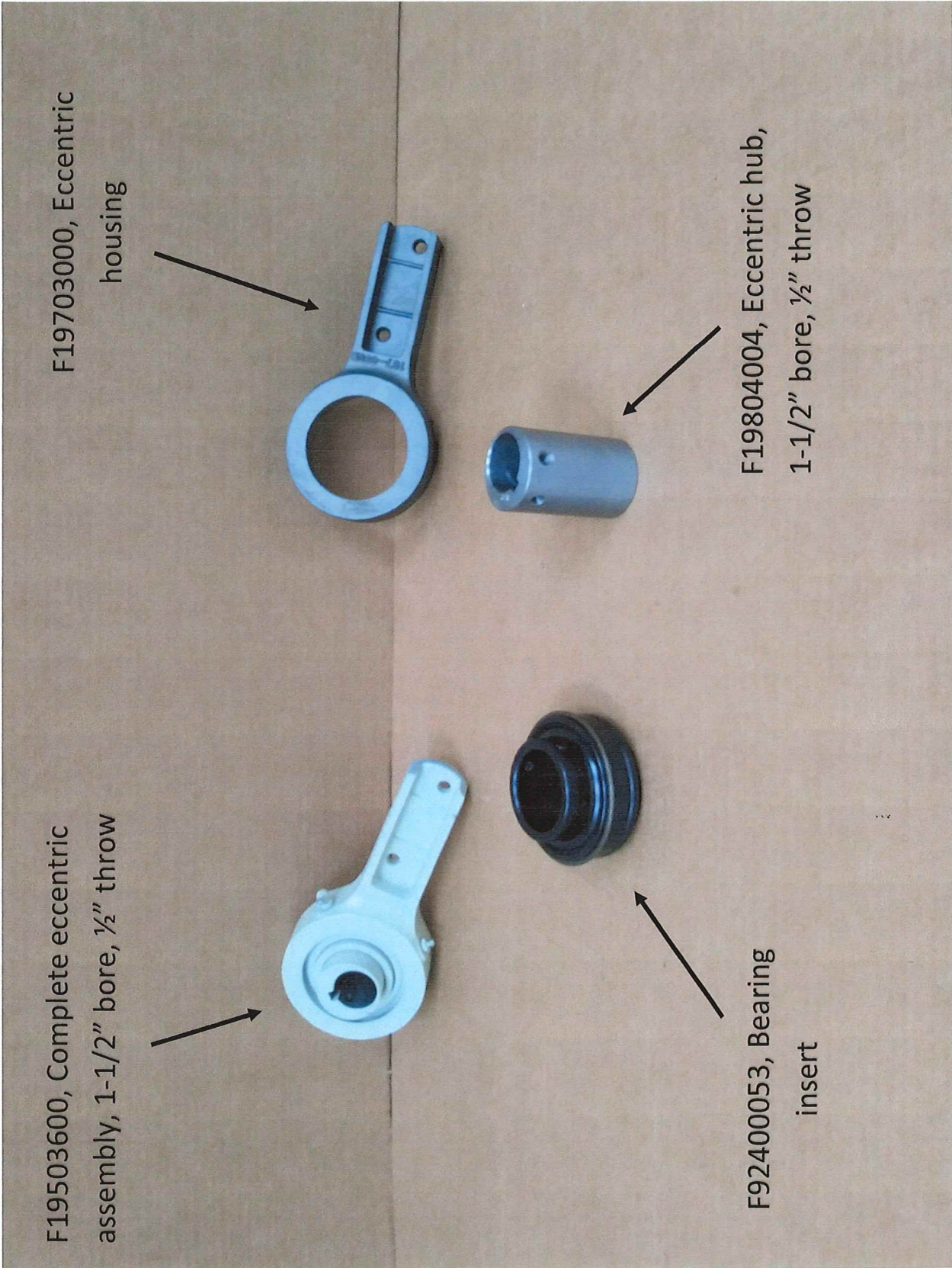
F01303510, 3-4 combo sheave, 1-1/2" bore

F92401080, 1-1/2" pillow block

F19503600, eccentric assembly, 1-1/2" bore, 1/2" throw
(SEE PAGE 15A FOR DETAIL)

NOTE: OLD STYLE HALFMOON HOUSING NOT AVAILABLE

Eccentric shaft, wood pitmans, 49,498, page 15

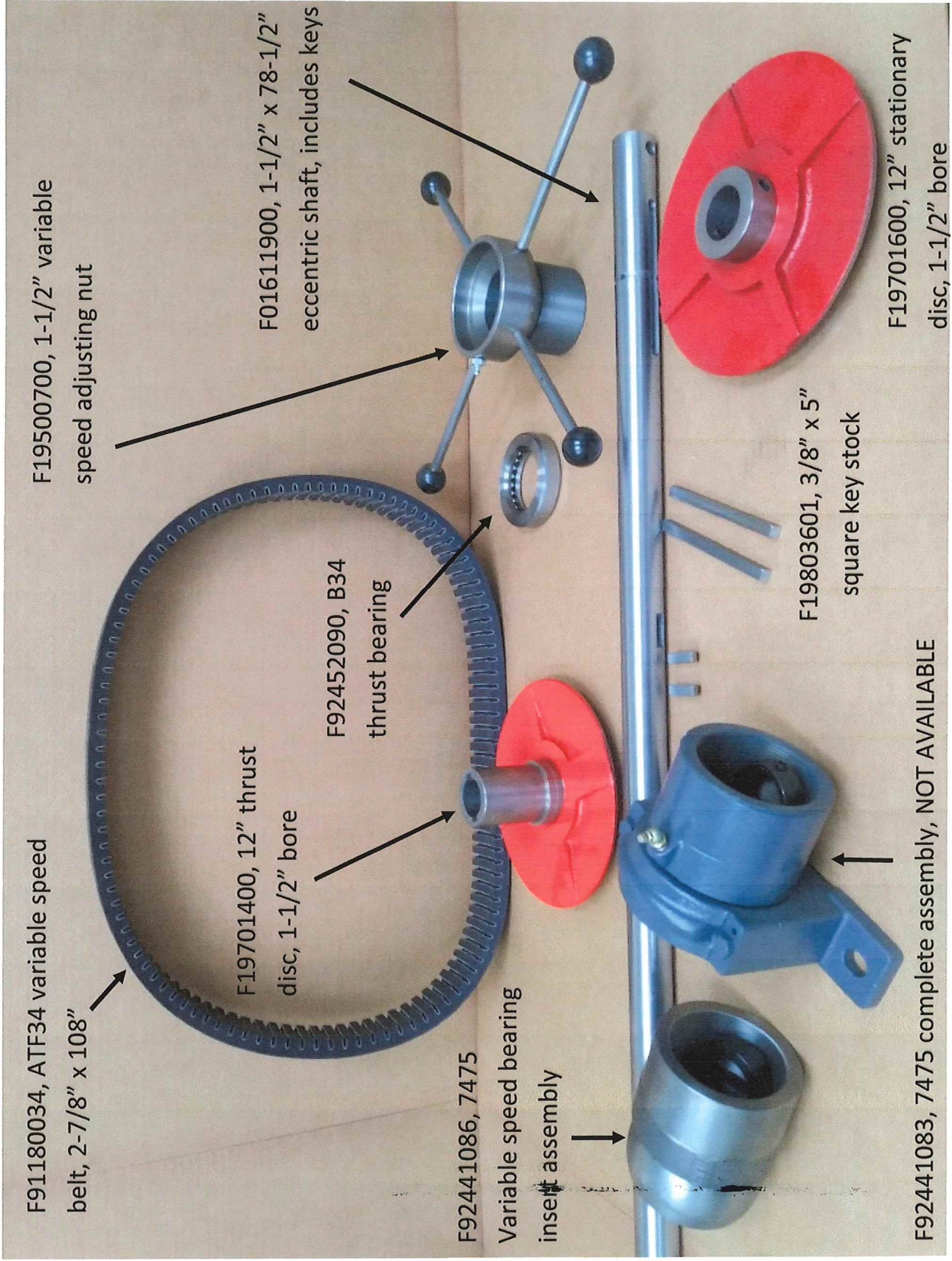


F19503600, Complete eccentric assembly, 1-1/2" bore, 1/2" throw

F19703000, Eccentric housing

F19804004, Eccentric hub, 1-1/2" bore, 1/2" throw

F92400053, Bearing insert



Eccentric shaft assembly, Super 49,498, page 16

REV	DATE	APPROVED
A	11/28/2008	amjohansen
B	11/28/2008	amjohansen
C	11/28/2008	amjohansen

REVISION HISTORY
 DATE APPROVED
 11/28/2008 amjohansen
 11/28/2008 amjohansen
 11/28/2008 amjohansen

REVISION HISTORY
 DATE APPROVED
 11/28/2008 amjohansen
 11/28/2008 amjohansen
 11/28/2008 amjohansen

REVISION HISTORY
 DATE APPROVED
 11/28/2008 amjohansen
 11/28/2008 amjohansen
 11/28/2008 amjohansen

REVISION HISTORY
 DATE APPROVED
 11/28/2008 amjohansen
 11/28/2008 amjohansen
 11/28/2008 amjohansen

REVISION HISTORY
 DATE APPROVED
 11/28/2008 amjohansen
 11/28/2008 amjohansen
 11/28/2008 amjohansen

REVISION HISTORY
 DATE APPROVED
 11/28/2008 amjohansen
 11/28/2008 amjohansen
 11/28/2008 amjohansen

REVISION HISTORY
 DATE APPROVED
 11/28/2008 amjohansen
 11/28/2008 amjohansen
 11/28/2008 amjohansen

REVISION HISTORY
 DATE APPROVED
 11/28/2008 amjohansen
 11/28/2008 amjohansen
 11/28/2008 amjohansen

REVISION HISTORY
 DATE APPROVED
 11/28/2008 amjohansen
 11/28/2008 amjohansen
 11/28/2008 amjohansen

REVISION HISTORY
 DATE APPROVED
 11/28/2008 amjohansen
 11/28/2008 amjohansen
 11/28/2008 amjohansen

REVISION HISTORY
 DATE APPROVED
 11/28/2008 amjohansen
 11/28/2008 amjohansen
 11/28/2008 amjohansen

REVISION HISTORY
 DATE APPROVED
 11/28/2008 amjohansen
 11/28/2008 amjohansen
 11/28/2008 amjohansen

REVISION HISTORY
 DATE APPROVED
 11/28/2008 amjohansen
 11/28/2008 amjohansen
 11/28/2008 amjohansen

REVISION HISTORY
 DATE APPROVED
 11/28/2008 amjohansen
 11/28/2008 amjohansen
 11/28/2008 amjohansen

REVISION HISTORY
 DATE APPROVED
 11/28/2008 amjohansen
 11/28/2008 amjohansen
 11/28/2008 amjohansen

REVISION HISTORY
 DATE APPROVED
 11/28/2008 amjohansen
 11/28/2008 amjohansen
 11/28/2008 amjohansen

REVISION HISTORY
 DATE APPROVED
 11/28/2008 amjohansen
 11/28/2008 amjohansen
 11/28/2008 amjohansen

REVISION HISTORY
 DATE APPROVED
 11/28/2008 amjohansen
 11/28/2008 amjohansen
 11/28/2008 amjohansen

REVISION HISTORY
 DATE APPROVED
 11/28/2008 amjohansen
 11/28/2008 amjohansen
 11/28/2008 amjohansen

REVISION HISTORY
 DATE APPROVED
 11/28/2008 amjohansen
 11/28/2008 amjohansen
 11/28/2008 amjohansen

REVISION HISTORY
 DATE APPROVED
 11/28/2008 amjohansen
 11/28/2008 amjohansen
 11/28/2008 amjohansen

REVISION HISTORY
 DATE APPROVED
 11/28/2008 amjohansen
 11/28/2008 amjohansen
 11/28/2008 amjohansen

REVISION HISTORY
 DATE APPROVED
 11/28/2008 amjohansen
 11/28/2008 amjohansen
 11/28/2008 amjohansen

REVISION HISTORY
 DATE APPROVED
 11/28/2008 amjohansen
 11/28/2008 amjohansen
 11/28/2008 amjohansen

REVISION HISTORY
 DATE APPROVED
 11/28/2008 amjohansen
 11/28/2008 amjohansen
 11/28/2008 amjohansen

REVISION HISTORY
 DATE APPROVED
 11/28/2008 amjohansen
 11/28/2008 amjohansen
 11/28/2008 amjohansen

REVISION HISTORY
 DATE APPROVED
 11/28/2008 amjohansen
 11/28/2008 amjohansen
 11/28/2008 amjohansen

REVISION HISTORY
 DATE APPROVED
 11/28/2008 amjohansen
 11/28/2008 amjohansen
 11/28/2008 amjohansen

REVISION HISTORY
 DATE APPROVED
 11/28/2008 amjohansen
 11/28/2008 amjohansen
 11/28/2008 amjohansen

REVISION HISTORY
 DATE APPROVED
 11/28/2008 amjohansen
 11/28/2008 amjohansen
 11/28/2008 amjohansen

REVISION HISTORY
 DATE APPROVED
 11/28/2008 amjohansen
 11/28/2008 amjohansen
 11/28/2008 amjohansen

REVISION HISTORY
 DATE APPROVED
 11/28/2008 amjohansen
 11/28/2008 amjohansen
 11/28/2008 amjohansen

REVISION HISTORY
 DATE APPROVED
 11/28/2008 amjohansen
 11/28/2008 amjohansen
 11/28/2008 amjohansen

REVISION HISTORY
 DATE APPROVED
 11/28/2008 amjohansen
 11/28/2008 amjohansen
 11/28/2008 amjohansen

REVISION HISTORY
 DATE APPROVED
 11/28/2008 amjohansen
 11/28/2008 amjohansen
 11/28/2008 amjohansen

REVISION HISTORY
 DATE APPROVED
 11/28/2008 amjohansen
 11/28/2008 amjohansen
 11/28/2008 amjohansen

REVISION HISTORY
 DATE APPROVED
 11/28/2008 amjohansen
 11/28/2008 amjohansen
 11/28/2008 amjohansen

REVISION HISTORY
 DATE APPROVED
 11/28/2008 amjohansen
 11/28/2008 amjohansen
 11/28/2008 amjohansen

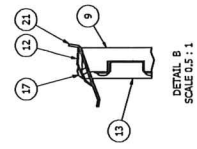
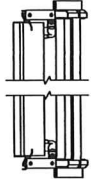
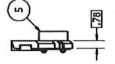
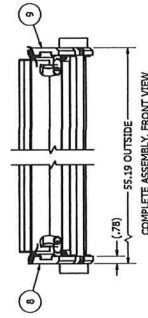
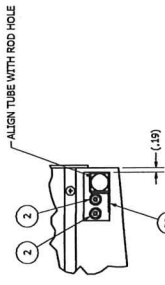
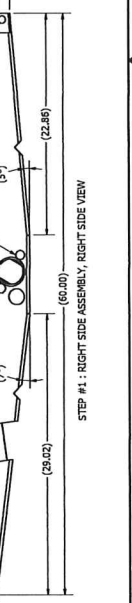
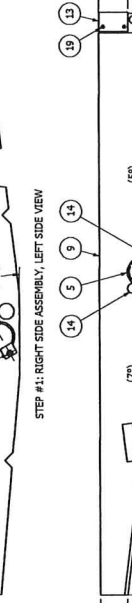
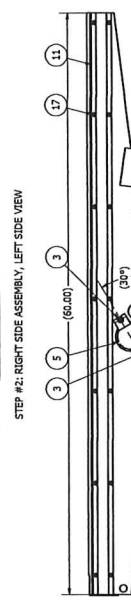
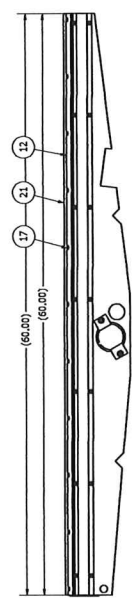
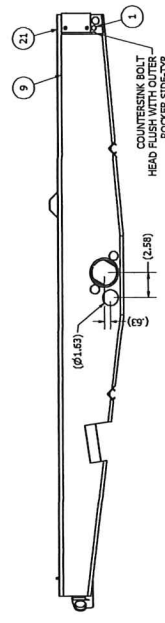
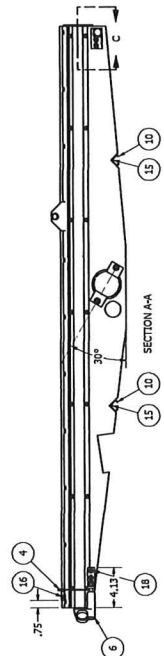
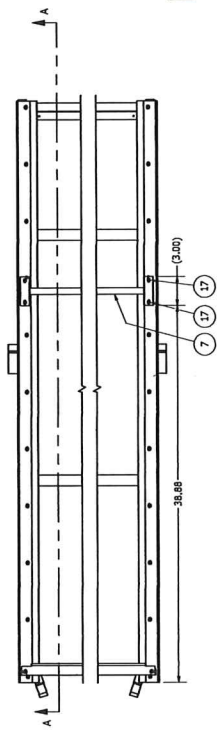
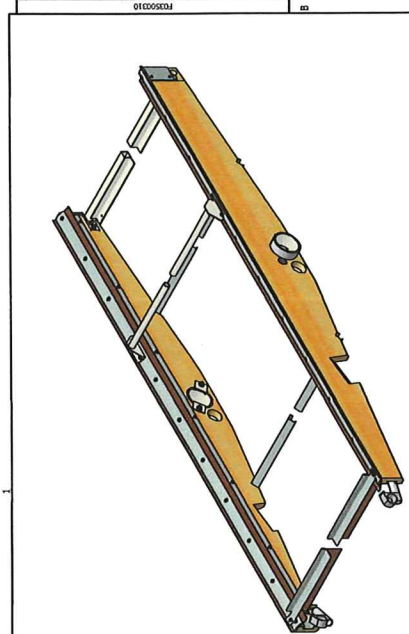
REVISION HISTORY
 DATE APPROVED
 11/28/2008 amjohansen
 11/28/2008 amjohansen
 11/28/2008 amjohansen

REVISION HISTORY
 DATE APPROVED
 11/28/2008 amjohansen
 11/28/2008 amjohansen
 11/28/2008 amjohansen

REVISION HISTORY
 DATE APPROVED
 11/28/2008 amjohansen
 11/28/2008 amjohansen
 11/28/2008 amjohansen

REVISION HISTORY
 DATE APPROVED
 11/28/2008 amjohansen
 11/28/2008 amjohansen
 11/28/2008 amjohansen

REVISION HISTORY
 DATE APPROVED
 11/28/2008 amjohansen
 11/28/2008 amjohansen
 11/28/2008 amjohansen



ITEM	PART NUMBER	QTY	DESCRIPTION
21	FR1152006	10.333	BELTING, 3 PLY FSKS, 2.50 X 6.00"
20	FR3003303	4	GRV W/DMT, PIPE, ROCKER, #8
18	FR2453463	4	SM5, PAN X, HD, #8 X 3/4"
17	FR2453463	4	SM5, PAN X, HD, #8 X 3/4"
16	FR2452101	2	SM5, PAN X, HD, #8 X 1.00"
15	FR2021407	4	SM5, FLAT CROSS HEAD #10 X 1.50"
14	FR2021407	4	BOLT, ELEV 7/16-20 X 1.25"
13	FR3806000	2	ANGLE, SCREEN STDY, ROCKER, #8
12	FR3806000	2	ANGLE, SCREEN STDY, ROCKER, #8
11	FR3806000	2	UNFR, SCREENWAY, ROCKER, 60.00"
10	FR3806002	2	BRACE, BOTTOM, ROCKER, #8
9	FR3600500	1	SIDE, ROCKER, RH BOTTOM, BOTTOM SHOE, 298D
8	FR3600500	1	SIDE, ROCKER, LH BOTTOM, BOTTOM SHOE, 298D
7	FR3305800	1	GRV W/DMT, PIPE, ROCKER, #8
6	FR3305800	1	GRV W/DMT, PIPE, ROCKER, #8
5	FR3305800	2	SCREEN HOOK ASSY, STANDARD
4	FR3305800	2	SCREEN HOOK ASSY, STANDARD
3	FR2783300	4	NUT, HEX SERAL LOCK 1/4-20
2	FR2783300	4	NUT, HEX SERAL LOCK 1/4-20
1	FR2783300	4	BOLT, CARB 10-24 X 1.25"

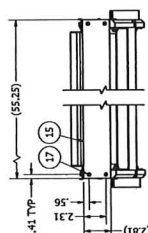
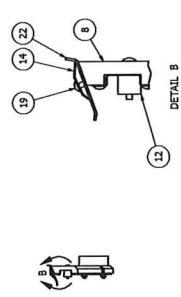
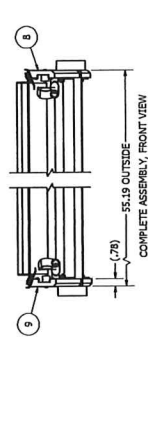
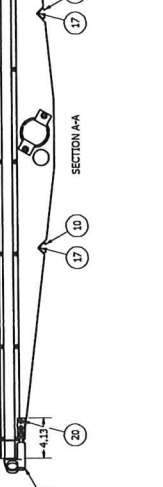
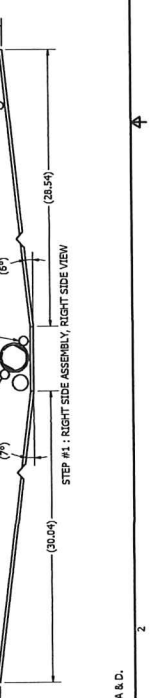
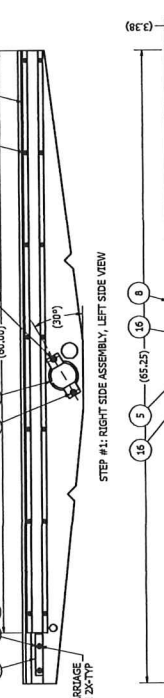
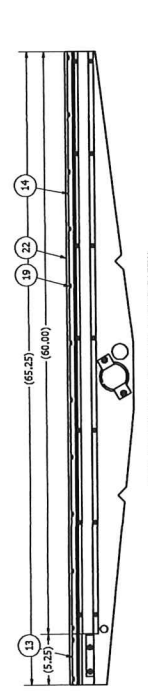
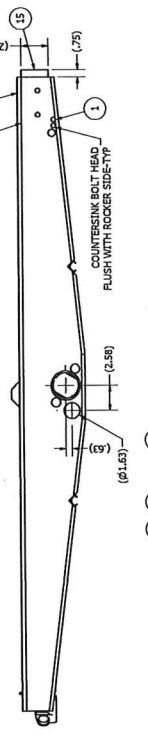
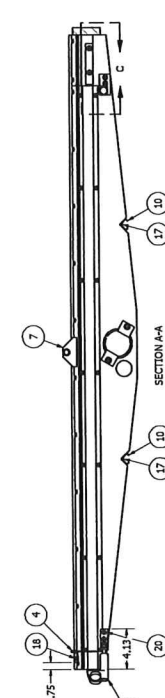
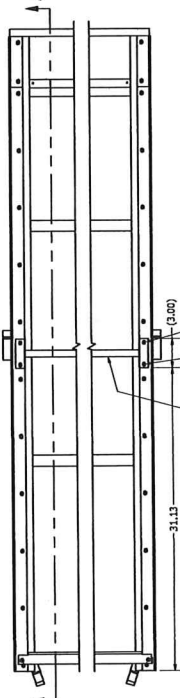
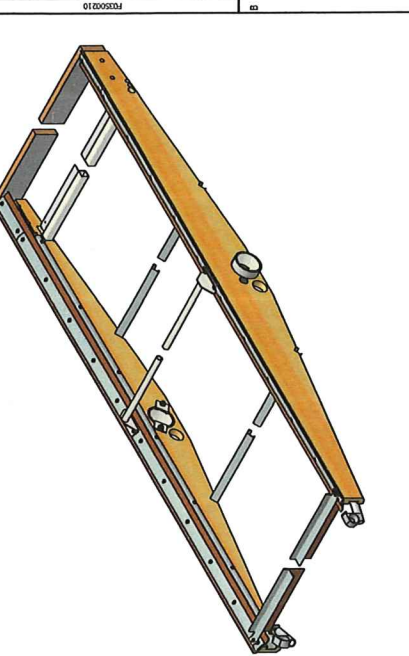
L3HARRIS CORPORATION
 3800 UNIVERSITY AVENUE
 MILPITAS, CA 95035
 TEL: 415 353 7000
 FAX: 415 353 7001
 WWW.L3HARRIS.COM
 © 2008 L3HARRIS CORPORATION
 ALL RIGHTS RESERVED
 DRAWING NO. FR3300310
 REV. 1.0
 DATE 10/28/2008
 DESIGNED BY: amjohansen
 CHECKED BY: amjohansen
 APPROVED BY: amjohansen
 PART NUMBER: FR3300310
 QUANTITY: 1 of 1

NOTES:
 1. LIST SCALE FROM DRAWING.
 2. ONE PIECE REQUIRED PER R3300310/78: SHOE ASSY, BOTTOM LH/RH W/ROCKERS, 298D.

Notes:
 1. DO NOT SCALE FROM DRAWING.
 2. ONE PIECE REQUIRED PER R33002108: SHOE ASSY, BOTTOM RH W/ROCKERS, Z98D.
 3. ONE PIECE REQUIRED PER R33081807: SHOE ASSY, BOTTOM LH/R W/ROCKERS, 69A & D.

REV	ECO	DESCRIPTION	DATE	APPROVED
A	XXXXXX	RELEASE	11/29/2013	dmjohnson
B	XXXXXX	REVISION: PARTS & SIZE	12/12/2013	dmjohnson
C	XXXXXX	R33002108 WAS R33002109 AND P11307498	4/17/2013	jimose
D	XXXXXX	ROTATE ROCKER CURVE 3D DES. ADD R33065600, 60282525 & 68785500 WAS R343540210	4/17/2013	jimose

2



ITEM	PART NUMBER	QTY	DESCRIPTION
22	F31152006	2	BELTING, 3 PLY FPKP 2.50 X 65.25"
21	F36003303	1	GIRT W/DMIT, ROCKER ADJ. TELESCOPING, #8
20	F30505003	2	ROLLER, 1" DIA., 5" DIA. X 4" H
19	F34505400	58	SKS PAN X HD, #8 X 3/4"
18	F34505010	2	SKS PAN X HD, #8 X 1.00"
17	F34400301	8	SKS, FLAT CROSS HEAD #10 X 1.50"
16	F30221407	4	BOLT, ELEV. 1/4-20 X 1.25"
15	F11307305	1	BOARD, REAR, SPOUT GIRT 2.81", S98D
14	F03601100	2	CAP, RUBBER HOLDING ROCKER, 60.00"
13	F03601100	2	CAP, RUBBER HOLDING ROCKER, 5.25"
12	F13080413	2	BRACE, 1/2" DIA. X 4" L, 60.00"
11	F03800002	2	BRACE, BOTTOM, ROCKER, #8
10	F03600300	1	SIDE, ROCKER, LH TOP, BOTTOM SHOE, Z98D
9	F03600200	1	SIDE, ROCKER, RH TOP, BOTTOM SHOE, Z98D
8	F03505900	1	GIRT W/DMIT, PIPE, ROCKER #8
7	F03505900	1	SCREEN HOOK ASSY, STANDARD
6	F03505900	1	SCREEN HOOK ASSY, STANDARD
5	F03505900	1	SCREEN HOOK ASSY, STANDARD
4	F03505900	1	SCREEN HOOK ASSY, STANDARD
3	16728300	4	NUT, HEX SERA, LOCK 1/4-20
2	16728300	4	NUT, HEX SERA, LOCK 1/4-20
1	60282626	8	BOLT, CARB. 1/2-24 X 1.25"

CAD
 This drawing is the property of the Papeel Company, Inc. and its subsidiaries. It is to be used only for the purpose intended and is not to be reproduced, stored in a retrieval system, or transmitted in any form or by any means, without the prior written consent of the P.A.T. Papeel Company, Inc.

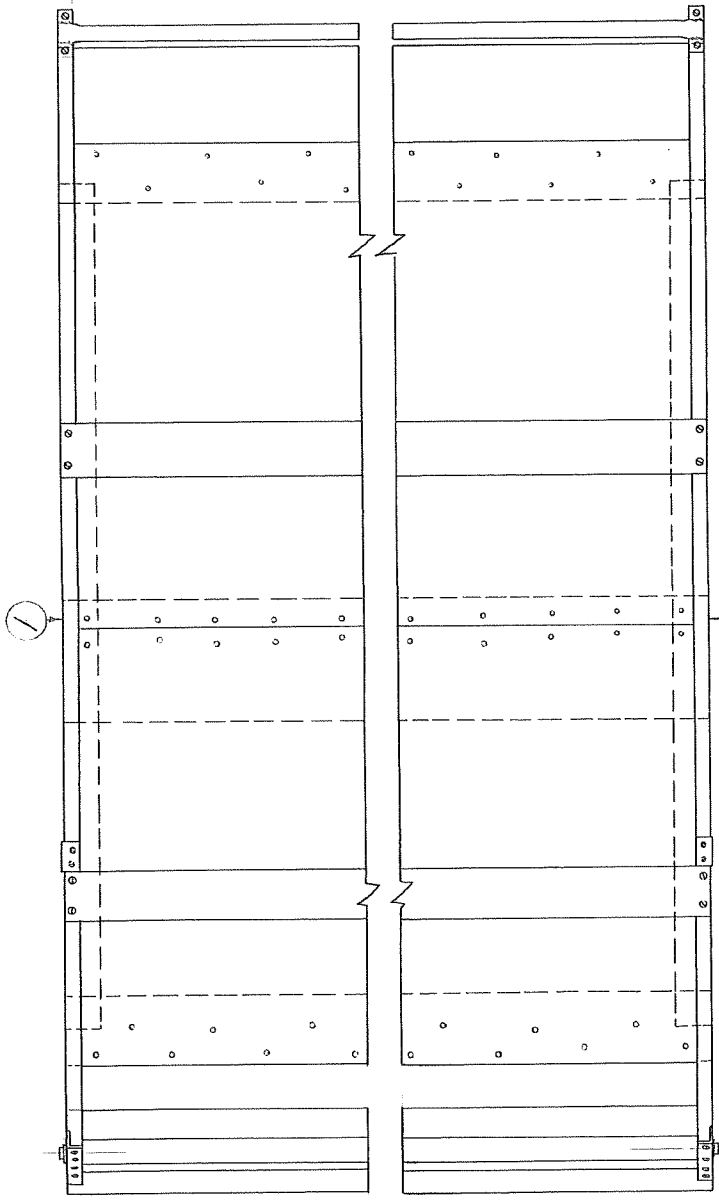
REVISIONS

DATE	BY	DESCRIPTION
11/29/2013	dmjohnson	RELEASE
12/12/2013	dmjohnson	REVISION: PARTS & SIZE
4/17/2013	jimose	R33002108 WAS R33002109 AND P11307498
4/17/2013	jimose	ROTATE ROCKER CURVE 3D DES. ADD R33065600, 60282525 & 68785500 WAS R343540210

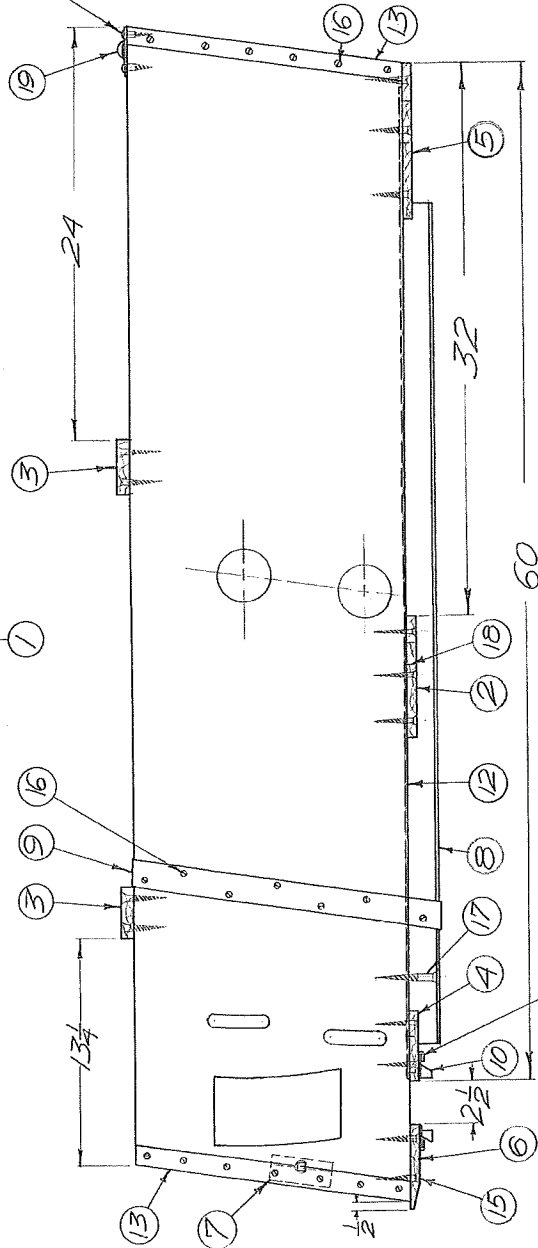
DATE: 10/28/2008
 TIME: 11:51 AM
 DRAWN BY: dmjohnson
 CHECKED BY: dmjohnson
 APPROVED BY: dmjohnson

SCALE: 1:1
 SHEET: 1 OF 1

3



ITEM	QTY	MACH. NO.	PART NO.	RECD	PART NAME	MAT'L	REMARKS
19	1	30-003	19		PIPE GIRT ASSY.		
18	70		18		1/2" 14 NAILS		FLAT HD.
17	12		17		2" 10 WOODSCREW		FLAT HD.
16	36		16		5/8" 8 WOODSCREW		FLAT HD.
15	30		15		1 1/2" 10 WOODSCREW		RD. HD.
14	4		14		3/4" 8 WOODSCREW		
13	4	33-003	13		END IRON	STL.	
12	2	33-122-2	12		SHOE BOTTOM METAL SH. ST.		
11	2	33-123-2	11		SPOUT GUIDE	SH. STL.	
10	2	31-162-2	10		SPOUT TRACK	PINE	
9	2	33-095	9		SIDE BRACE	STL.	
8	2	31-163	8		SHOE RUNNER	OAK	
7	1	31-164-2	7		CROSS GIRT	PINE	
6	1	31-165-2	6		SHOE WELSH	PINE	
5	1	31-169-3	5		FRONT BOARD	PINE	
4	1	31-169-2	4		SPOUT BOARD	PINE	
3	2	31-169-1	3		TOP BOARD	PINE	
2	2	31-167-2	2		PITMAN	PINE	
1	2	31-168	1		SHOE SIDE	OAK L.H. R.H.	



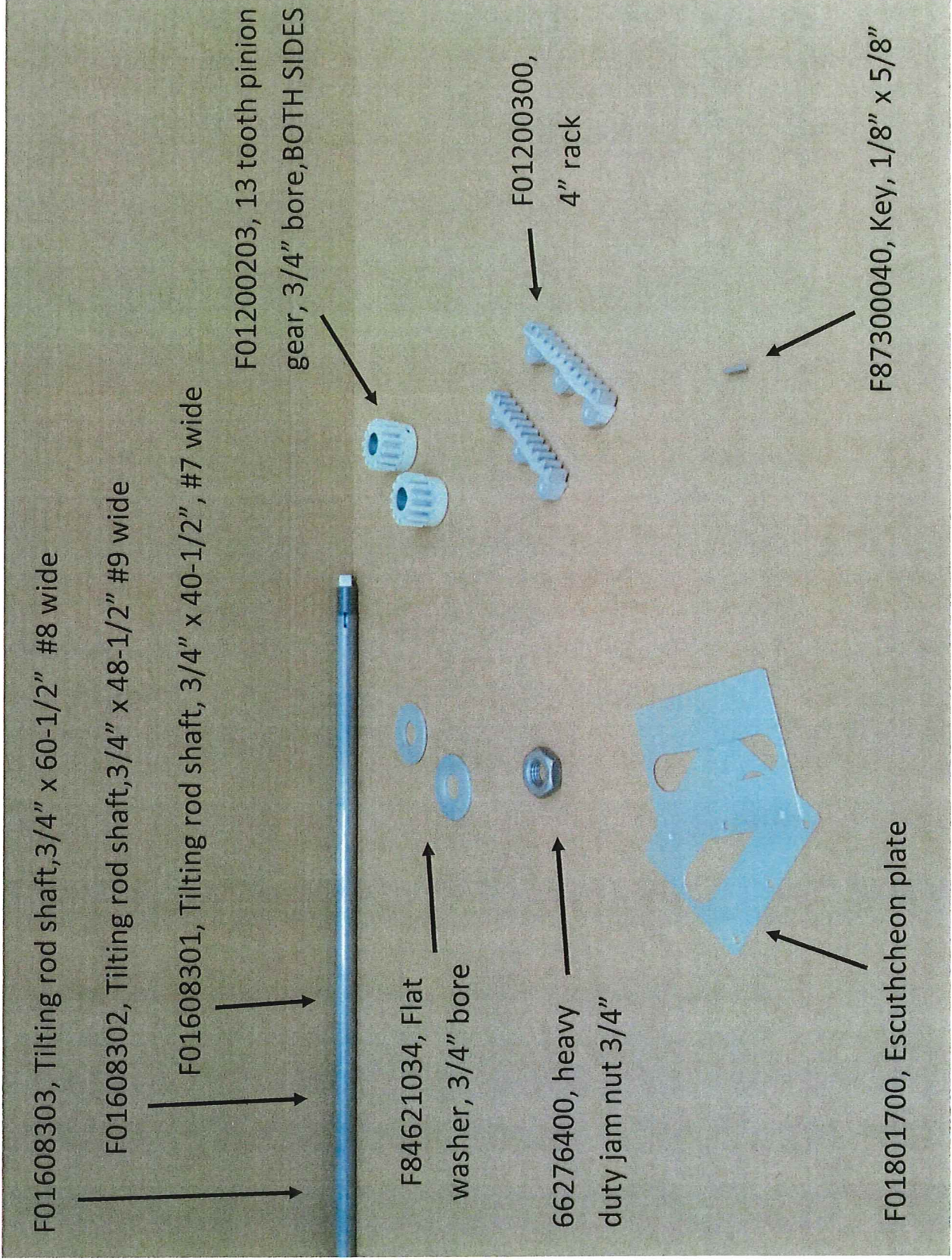
ITEM	QTY	MACH. NO.	PART NO.	RECD	PART NAME	MAT'L	REMARKS
19	1	30-003	19		PIPE GIRT ASSY.		
18	60		18		1/2" 14 NAILS		FLAT HD.
17	12		17		2" 10 WOODSCREW		FLAT HD.
16	36		16		5/8" 8 WOODSCREW		FLAT HD.
15	30		15		1 1/2" 10 WOODSCREW		RD. HD.
14	4		14		3/4" 8 WOODSCREW		
13	4	33-003	13		END IRON	STL.	
12	2	33-122-1	12		SHOE BOTTOM METAL SH. ST.		
11	2	33-123-1	11		SPOUT GUIDE	SH. STL.	
10	2	31-162-1	10		SPOUT TRACK	PINE	
9	2	33-095	9		SIDE BRACE	STL.	
8	2	31-163	8		SHOE RUNNER	OAK	
7	1	31-164-1	7		CROSS GIRT	PINE	
6	1	31-165-1	6		SHOE WELSH	PINE	
5	1	31-166-3	5		FRONT BOARD	PINE	
4	2	31-166-2	4		SPOUT BOARD	PINE	
3	2	31-166-1	3		TOP BOARD	PINE	
2	2	31-167-1	2		PITMAN	PINE	
1	2	31-168	1		SHOE SIDE	OAK L.H. R.H.	

NOTE:
FOR SHOES WITH ROCKERS INCLUDED USE:
#9 WIDE
L.H. - #30-061-4B
R.H. - #30-061-5B
#8 WIDE
L.H. - #30-061-6B
R.H. - #30-061-7B

#9 WIDE
L.H. AS SHOWN - #30-061-B
R.H. OPPOSITE - #30-061-1B
#8 WIDE
L.H. AS SHOWN - #30-061-2B
R.H. OPPOSITE - #30-061-3B

MICROFILMED

DATE: 9-18-57
SCALE: 1/2" = 1'-0"
OWN BY: J.E. TRO. BY: []
END. BY: []
ASSEMBLED SHOE
A. T. FERRELL & CO. 49-A
SAGINAW, MICH. 497-0
SHEET NO. 30-061



Screen rocker adjusting assembly

Bottom Fan Metal

