

**SERVICE MANUAL**  
**AND**  
**PARTS CATALOG**  
**FOR YOUR**  
**SUPER 498B**



*Grain, Seed and Bean Cleaners*

1440 SOUTH ADAMS STREET BLUFFTON, INDIANA 46714 (800) 248-8318  
Updated 5-20-21

[www.atferrell.com](http://www.atferrell.com)

# SUPER 498B CLEANER PARTS SET UP WITH BRUSH SCREEN CLEANING

## BRUSH SCREEN CLEANING SYSTEM

ITEM NO.	PAGE NO.	PART NUMBER	QTY.	DESCRIPTION
39	7	F01003001	3	Brush Adjusters-Control Side / <b>Left Hand Side(Includes Parts Below)</b>
	7	F01106101	1	Brush Idler Plate Left Hand
42	7	F01105400	1	Adjustments Handle with Spring
42	7	F82080060	1	Shoulder Bolt for Brush Adjuster
38	7	F01004902	3	Brush Adjusters - Idler Side / <b>Right Hand Side(Includes Parts Below)</b>
	7	F01106104	1	Brush Adjusting Plate Right Hand
43	7	F01106300	1	Idler Arm Support
43	7	F82080060	1	Shoulder Bolt for Brush Adjuster
39	7	F01003002	3	Brush Adjusters-Control Side / <b>Right Hand Side(Includes Parts Below)</b>
**	7	F01106003	1	Brush Idler Plate Right Hand
42	7	F01105400	1	Adjustments Handle with Spring
42	7	F82080060	1	Shoulder Bolt for Brush Adjuster
38	7	F01004901	3	Brush Adjusters - Idler Side / <b>Left Hand Side (Includes Parts Below)</b>
		F01106001	1	Brush Adjusting Plate Left Hand
43	7	F01106300	1	Idler Arm Support
43	7	F82080060	1	Shoulder Bolt for Brush Adjuster
		F01000200	12	Rope Sheave Assembly Complete <b>See attached picture</b>
		F09501900	3	Brush Carrier Assembly 25" x 46" <b>See attached picture 10</b>
		F01612102	3	Brush Carrier Shafts 1-3/16" x 64"
		F97700063	55	Wirelon Plastic Coated Steel Cable ( <b>In Feet</b> )

## BOTTOM FAN ASSEMBLY

ITEM NO.	PAGE NO.	PART NUMBER	QTY.	DESCRIPTION
		F01615901	1	Fan Shaft 1-1/2" X 79" <b>(Includes Keys)</b> <b>See attached picture 11 &amp; 12</b>
		<b>Not Available</b>	2	6715 Halfmoon Bridgetree Housing with Bearing
		F92400022	2	Bearing <b><u>Insert Only</u></b> for Above
		<b>Note: If housing is bad Items below must be substituted</b>		
		F92401080	2	1-1/2" Pillow Block Bearing
		F02707300	2	Bridgetree Mounting Angle for Bearing
201	25	F06302030	1	Bottom Drum Iron 57-5/8" x 80"
203	25	F06302130	1	Discharge Chute 4"
204	25	F06304304	1	Breast Iron 57-5/8" x 26-1/2"

## ECCENTRIC SHAFT ASSEMBLY

ITEM NO.	PAGE NO.	PART NUMBER	QTY.	DESCRIPTION
		F01611900	1	Eccentric Shaft 1-1/2" X 78-1/2" <b>(Includes Keys)</b> <b>See attached pictures 15 &amp; 16</b>
		<b>Not Available</b>	2	6714 Halfmoon Flange Bearing
		F92400022	1	1-1/2" Bearing <b><u>Insert Only</u></b> for Below
		F92053126	1	6714 Flange Bearing Conversion Kit
		<b>Not Available</b>	1	7475 1-1/2" Halfmoon Bearing Complete w/Bearing
		F92400026	1	1-1/2" Halfmoon Bearing <b><u>Insert Only</u></b> for Above
		F19503600	2	1-1/2" Throw Eccentric Assembly Complete <b>See attached picture 15B</b>

**NOTE: A FEW OF THE NEWER MACHINES HAD COUNTERWEIGHTS ADDED TO THE ECCENTRIC SHAFT**

F01104600	4	Counterweight Ends
F01804405	2	Counterweight 16-1/2"

## MAIN SHOE ASSEMBLY

ITEM NO.	PAGE NO.	PART NUMBER	QTY.	DESCRIPTION
		NOT AVAILABI	1	Bottom Shoe Complete with Rockers ( <b>Right Hand Discharge</b> )
		F03118601	1	Right Shoe Side
		F03118602	1	Left Shoe Side
		F03500400	1	Apron Assembly
		F08-----	1	Sand Spout Left Hand Machines ( <b>Check Measurements</b> )
		F08-----	1	Sand Spout Right Hand Machines ( <b>Check Measurements</b> )
		F08-----	1	Straw Spout Left Hand Machines ( <b>Check Measurements</b> )
		F08-----	1	Straw Spout Right Hand Machines ( <b>Check Measurements</b> )
			3	Rocker adjusting system <b>See attached picture</b>
		F03500210	2	Top Rocker Assembly Complete <b>See attached drawing</b>
		F03500310	1	Bottom Rocker Assembly Complete <b>See attached drawing</b>
		F03016510	2	Front Hanger with Block on Both Sides
		F03102601	2	Shoeside Hanger Support Block
		F03016520	3	Back Shoe Hanger with Block

**Discharge Spouts are Determined by Standing at the Front and Facing the Machine.  
Right Hand Discharge Spouts Would Discharge Towards Your Right Hand.**

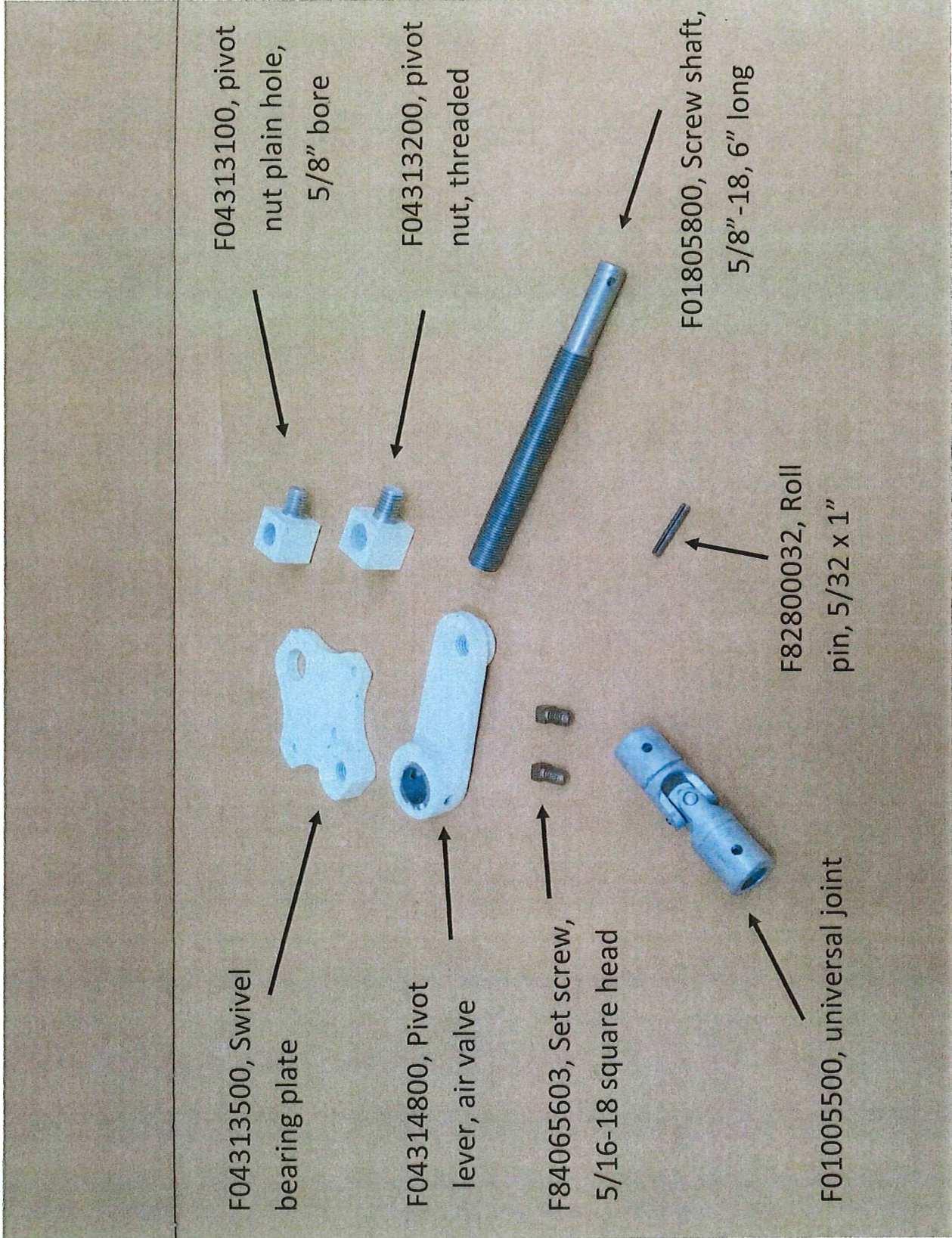
F01002803	1	Single Belt Idler Assembly Complete 5-1/2" <b>See attached drawing</b>
-----------	---	---

**The Following Are the Ball Tray Kit Parts That were  
Installed on the Super 498 Cleaners in the Past**

**Old Style Ball Trays with 1" Square Turkey Wire That Came Out  
With the Screens. Ball Trays were not attached to the Screens.**

F90005061	3	Ball Tray Weldment for 1 Piece Screens ( <b>NEW PUNCHED STYLE</b> )
F80026102	432	White 1-3/8" Balls
		or
F90005057	3	Ball Tray Weldment for 2 Piece Screens (Bottom 26" Section) <b>(NEW PUNCHED STYLE)</b>
F90005068	3	Ball Tray Weldment for 2 Piece Screens (For Top 34" Section) <b>(NEW PUNCHED STYLE)</b>
F80026102	432	White 1-3/8" Balls ( 54 Per Tray)
F11301707	6	Ball Tray Support Rail 24"
F11301708	6	Ball Tray Support Rail 31"





F04313100, pivot  
nut plain hole,  
5/8" bore

F04313200, pivot  
nut, threaded

F01805800, Screw shaft,  
5/8"-18, 6" long

F82800032, Roll  
pin, 5/32 x 1"

F04313500, Swivel  
bearing plate

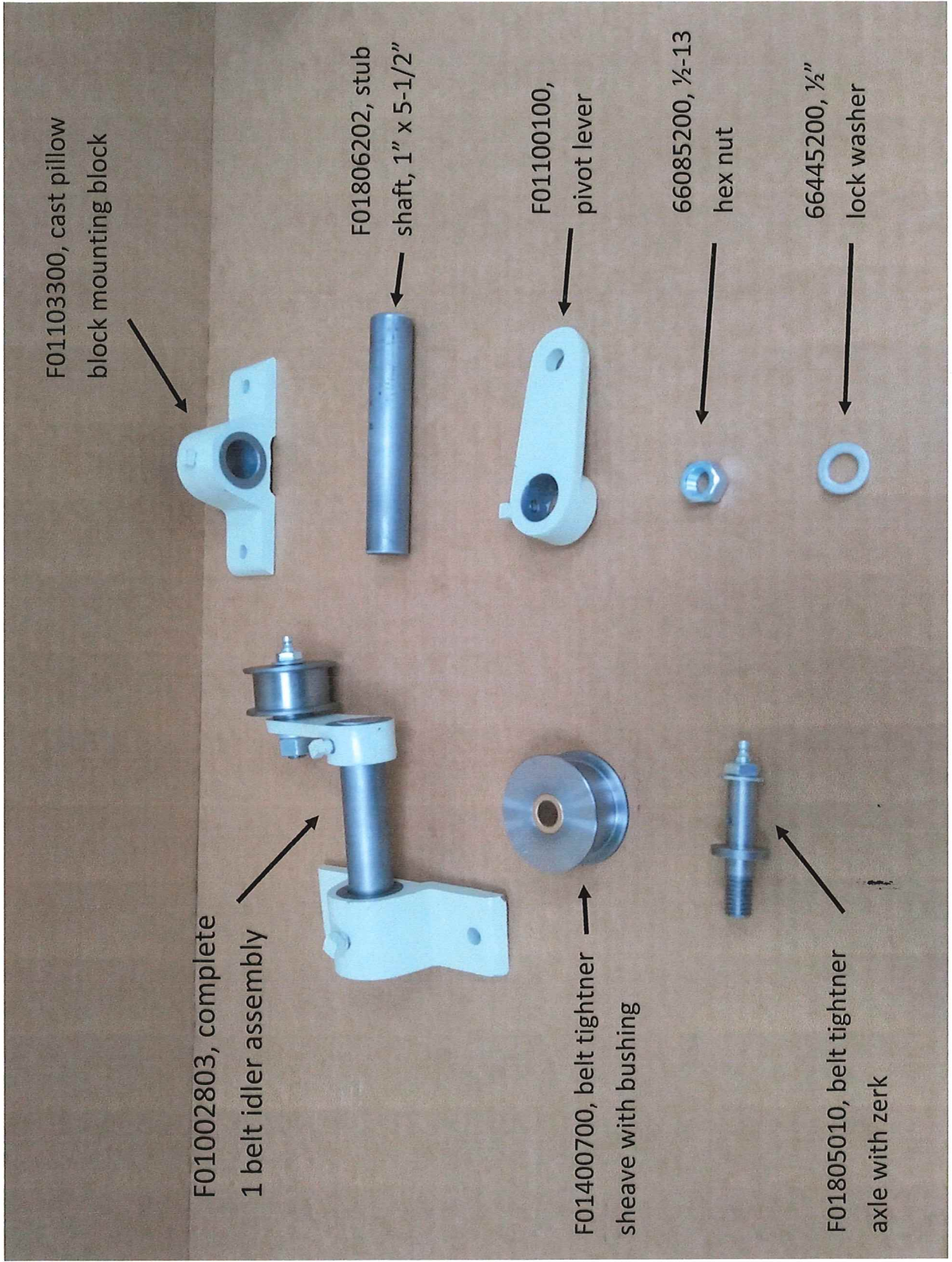
F04314800, Pivot  
lever, air valve

F84065603, Set screw,  
5/16-18 square head

F01005500, universal joint

# F01013500, Gate valve adjusting assembly, ALL





F01103300, cast pillow block mounting block



F01806202, stub shaft, 1\" x 5-1/2\"



F01100100, pivot lever



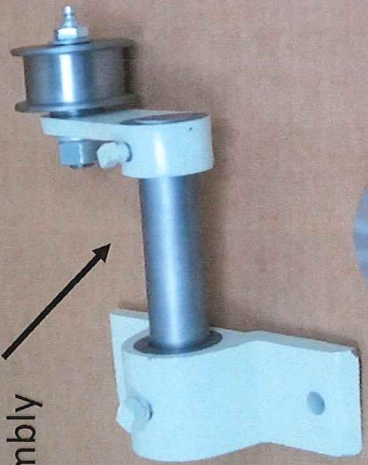
66085200, 1/2-13 hex nut



66445200, 1/2\" lock washer



F01002803, complete 1 belt idler assembly



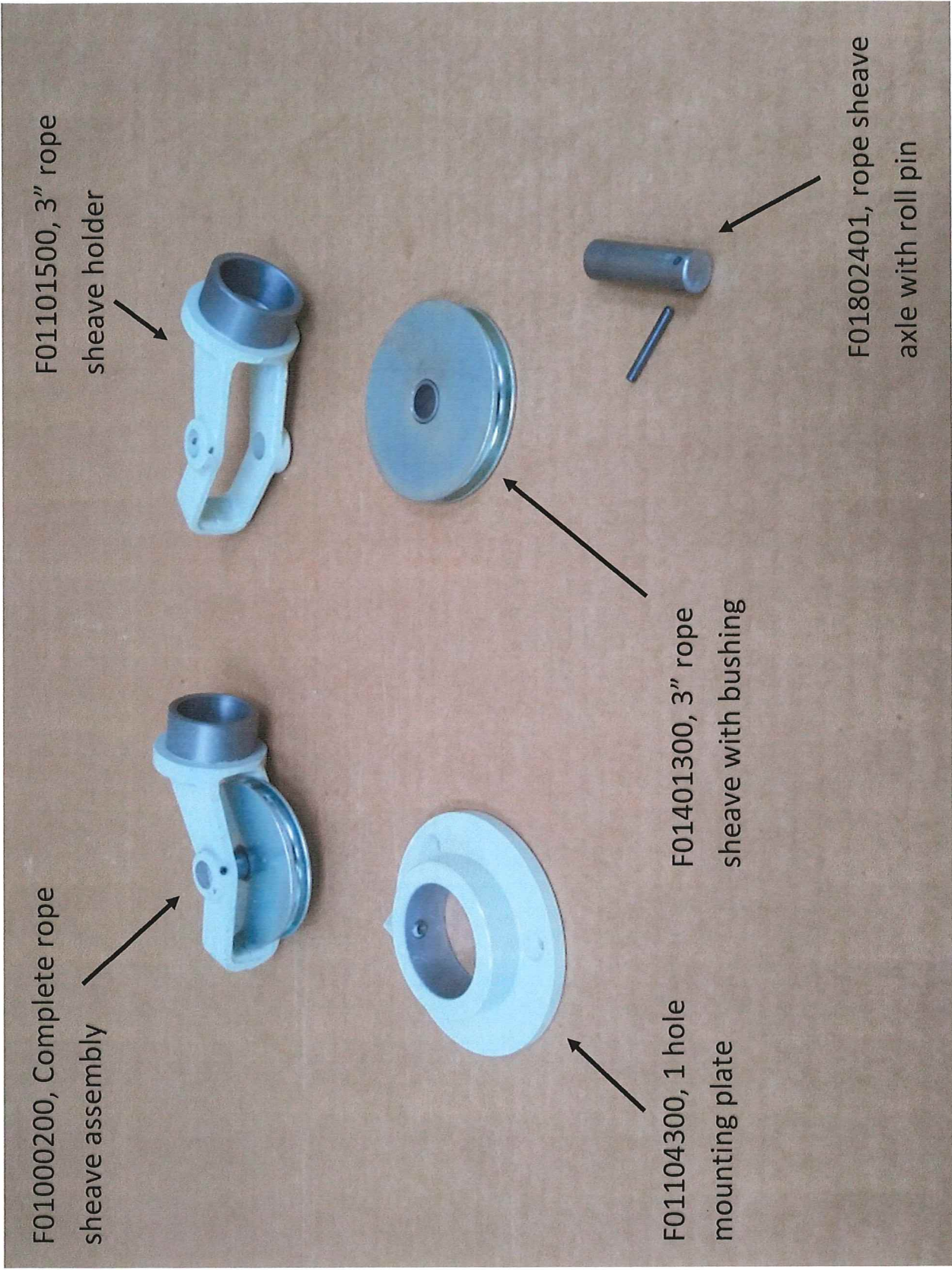
F01400700, belt tightener sheave with bushing



F01805010, belt tightener axle with zerck



# Belt tightener assembly



F01000200, Complete rope sheave assembly

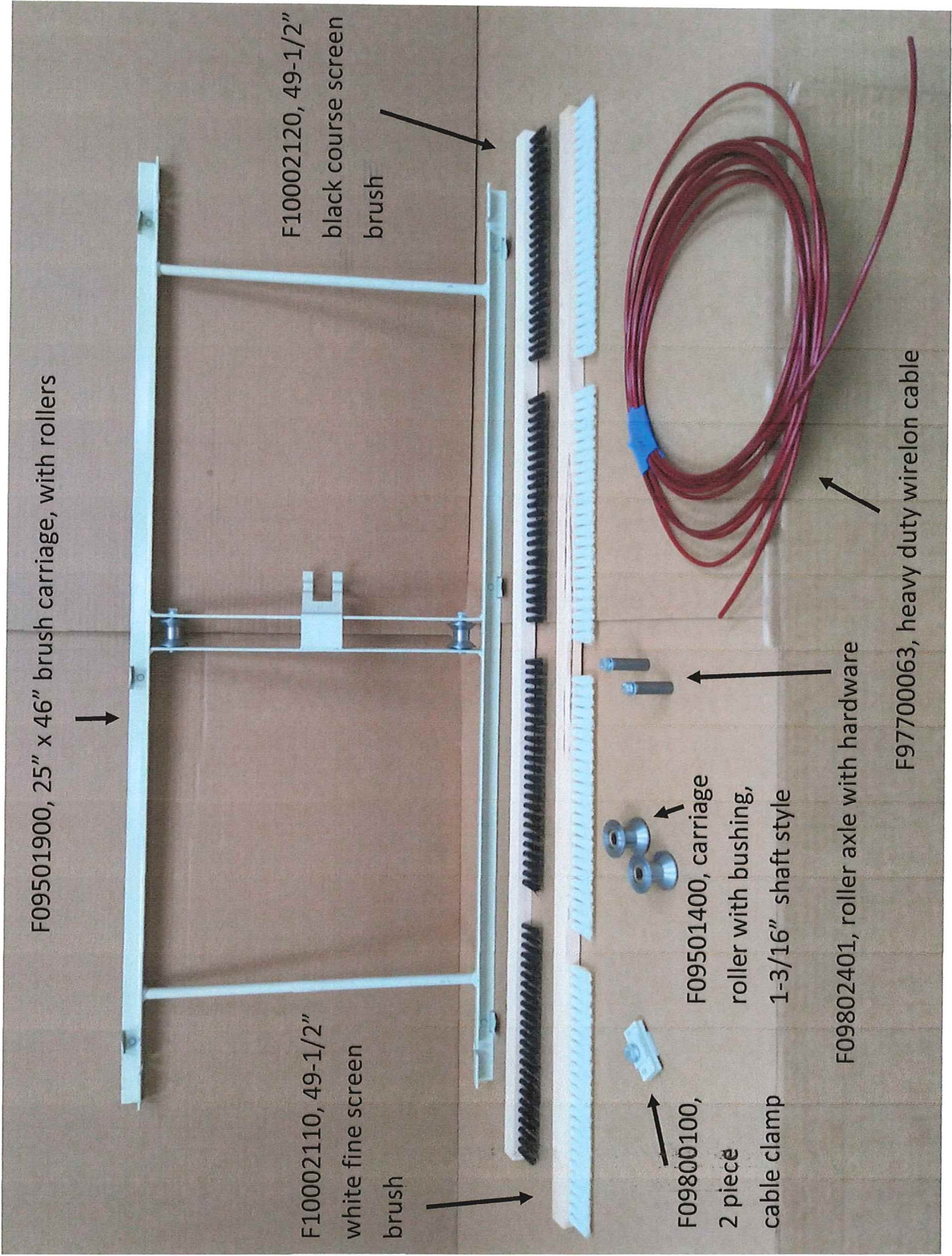
F01101500, 3" rope sheave holder

F01104300, 1 hole mounting plate

F01401300, 3" rope sheave with bushing

F01802401, rope sheave axle with roll pin

## 3" Rope sheave assembly



F09501900, 25" x 46" brush carriage, with rollers

F10002120, 49-1/2" black course screen brush

F10002110, 49-1/2" white fine screen brush



F09501400, carriage roller with bushing, 1-3/16" shaft style



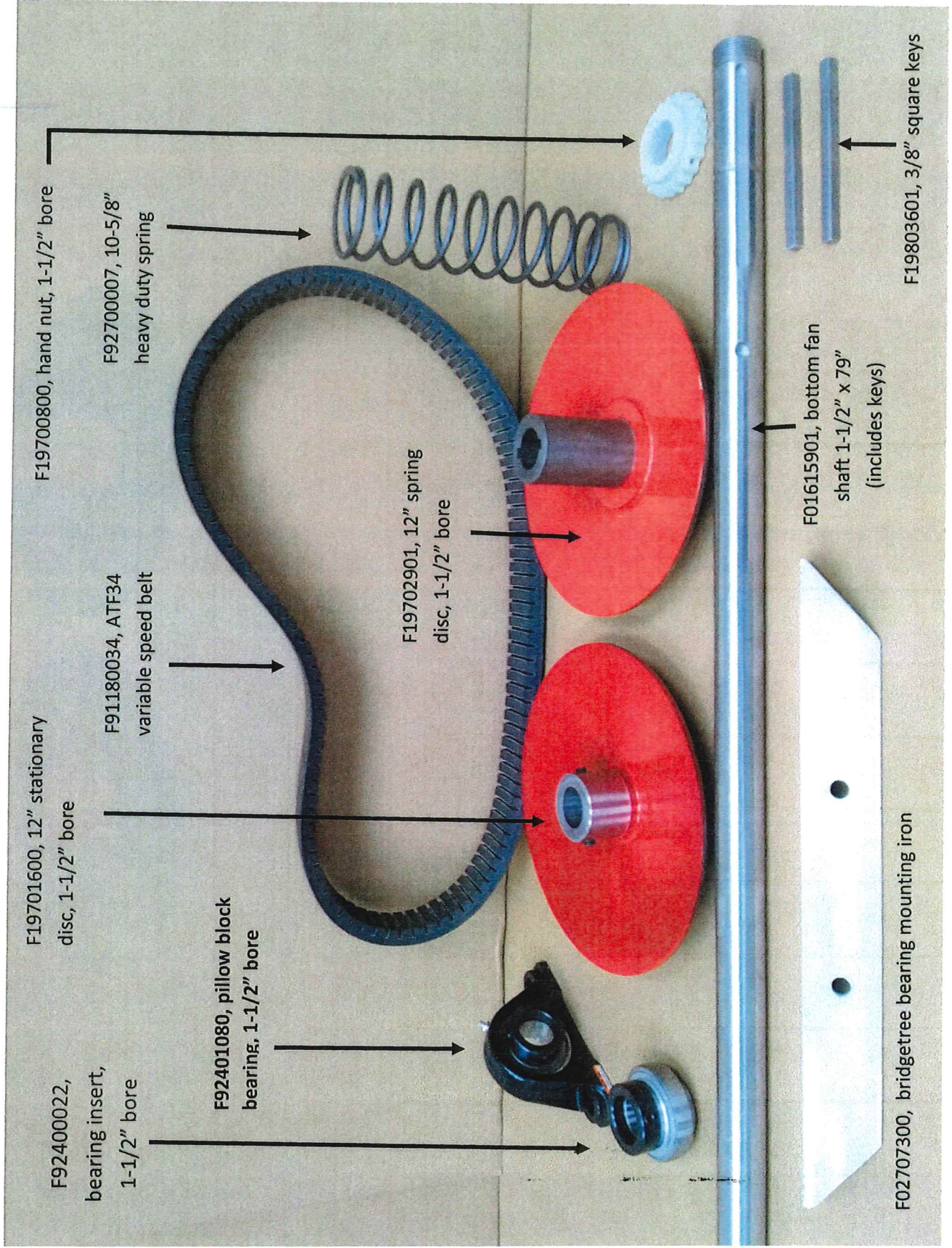
F09800100, 2 piece cable clamp

F09802401, roller axle with hardware



F97700063, heavy duty wirelon cable

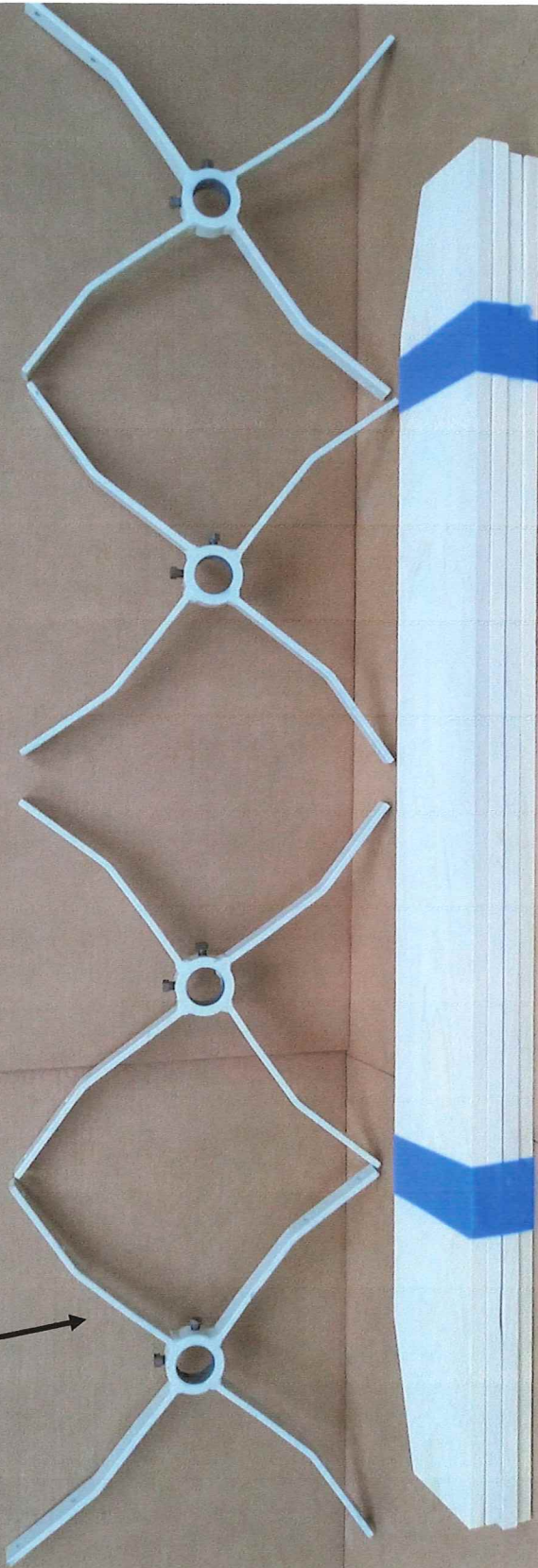
# Brush carriage, with accessories, page 10



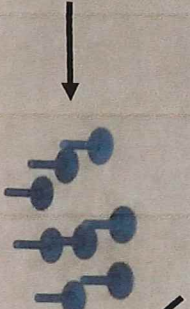
# Bottom fan shaft assembly, page 11

F06002778, complete bottom fan assembly

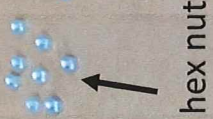
4 pieces, F06001000, bottom fan spider, 1-1/2" bore



32 pieces, F82021407, elevator bolt, 1/4-20 x 1-1/4"



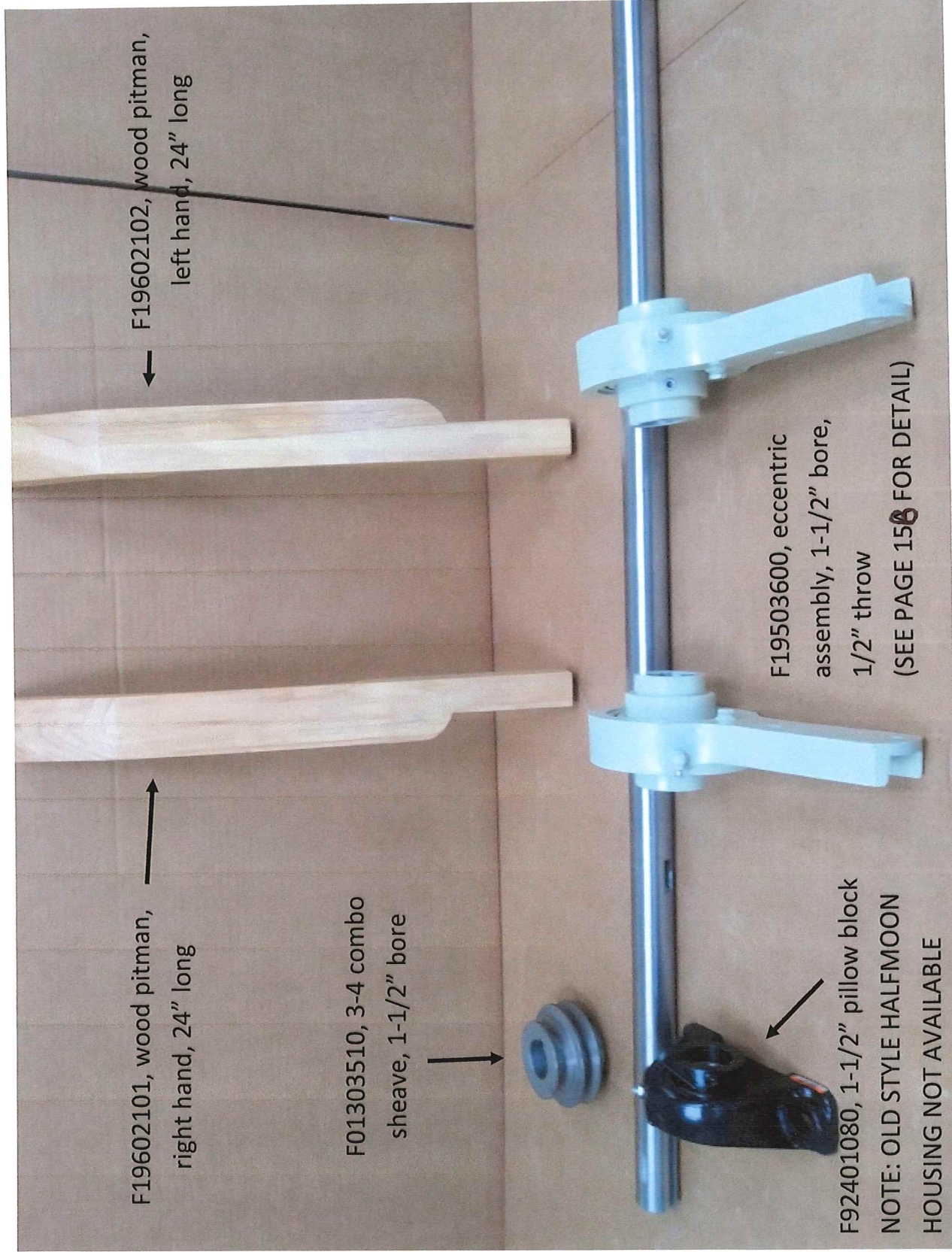
32 pieces, 66443300, 1/4" lock washer



32 pieces, 66083300, 1/4-20 hex nut

4 pieces, F01701101, bottom fan blade, 55-5/8" long

# Bottom fan assembly, 1-1/2" shaft, page 12



F19602101, wood pitman, right hand, 24" long

F19602102, wood pitman, left hand, 24" long

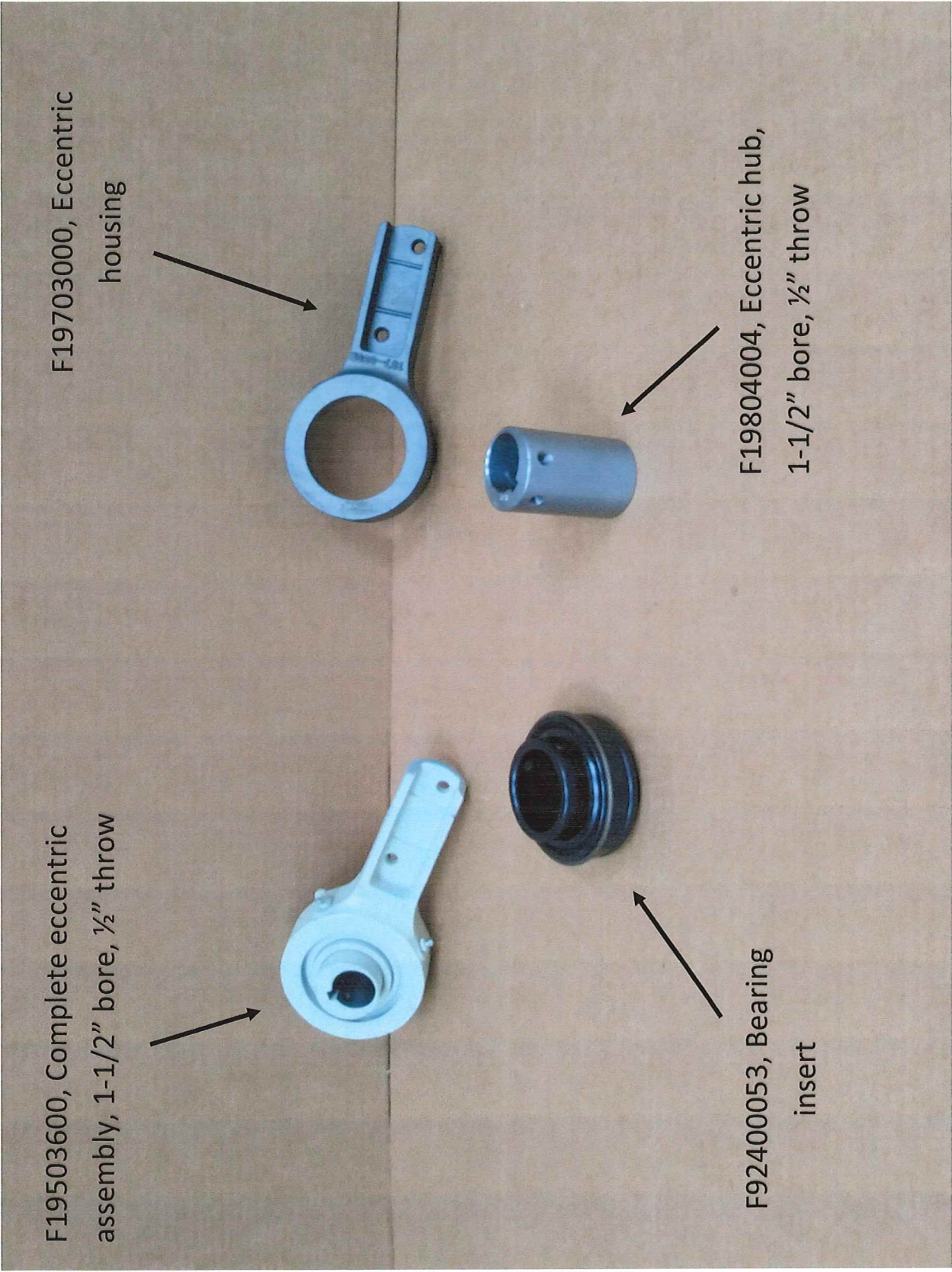
F01303510, 3-4 combo sheave, 1-1/2" bore

F19503600, eccentric assembly, 1-1/2" bore, 1/2" throw

F92401080, 1-1/2" pillow block

NOTE: OLD STYLE HALFMOON HOUSING NOT AVAILABLE  
(SEE PAGE 158 FOR DETAIL)

# Eccentric shaft, wood pitmans, 49,498, page 15

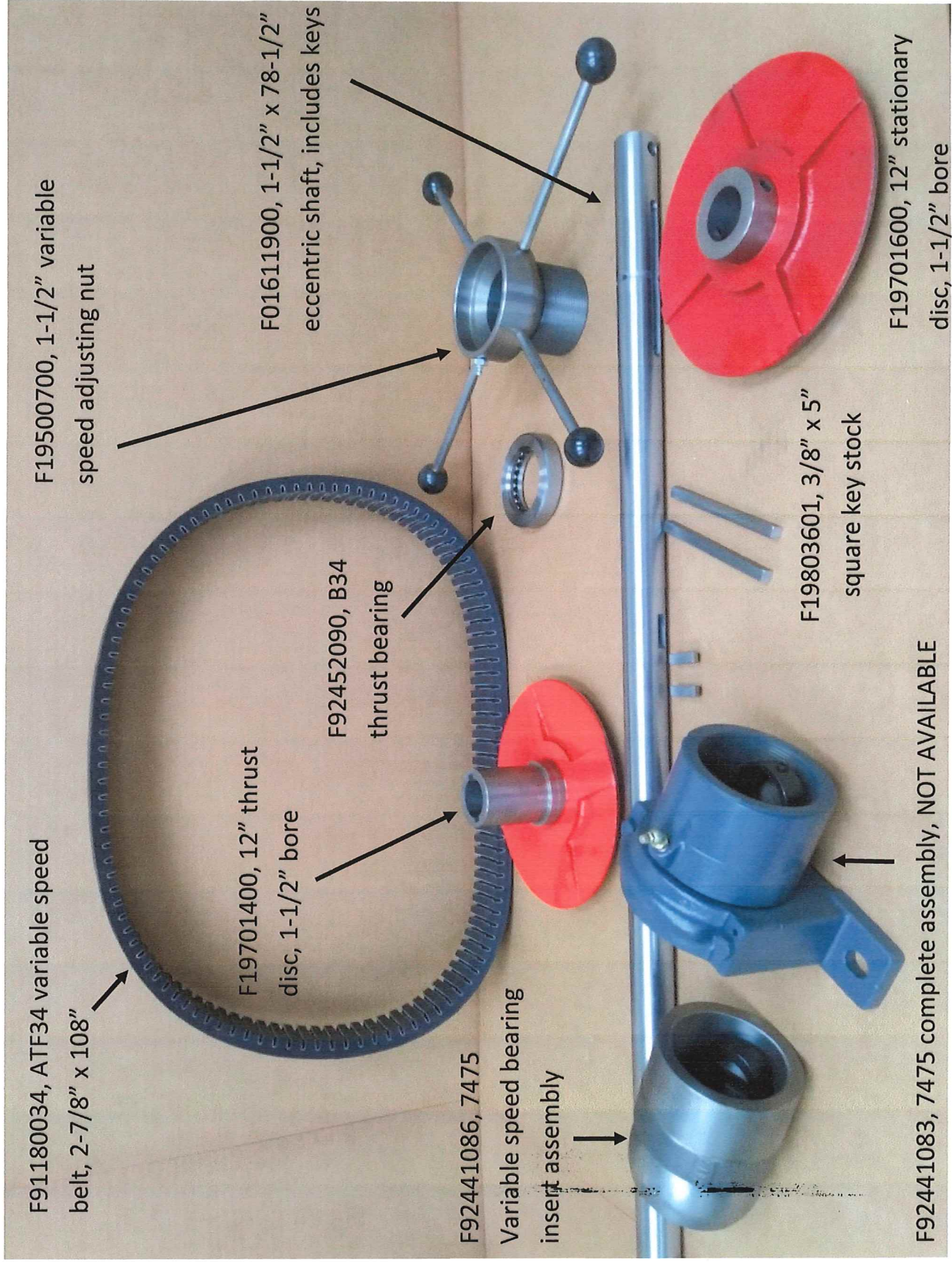


F19503600, Complete eccentric assembly, 1-1/2" bore, 1/2" throw

F19703000, Eccentric housing

F19804004, Eccentric hub, 1-1/2" bore, 1/2" throw

F92400053, Bearing insert



F91180034, ATF34 variable speed belt, 2-7/8" x 108"

F19500700, 1-1/2" variable speed adjusting nut

F19701400, 12" thrust disc, 1-1/2" bore

F01611900, 1-1/2" x 78-1/2" eccentric shaft, includes keys

F92452090, B34 thrust bearing

F92441086, 7475 Variable speed bearing insert assembly

F19803601, 3/8" x 5" square key stock

F19701600, 12" stationary disc, 1-1/2" bore

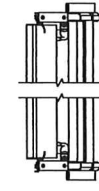
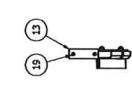
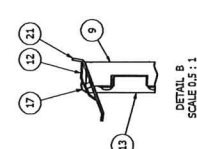
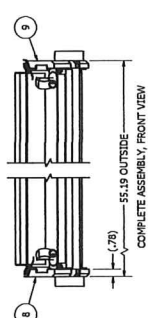
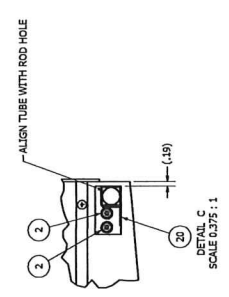
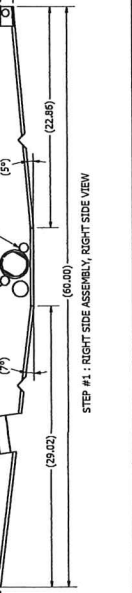
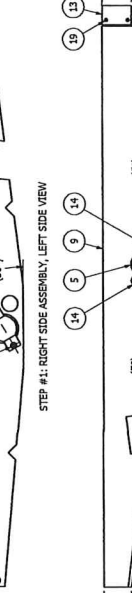
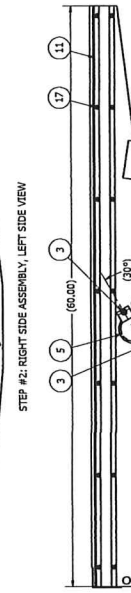
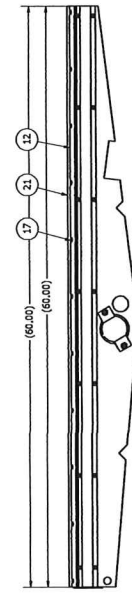
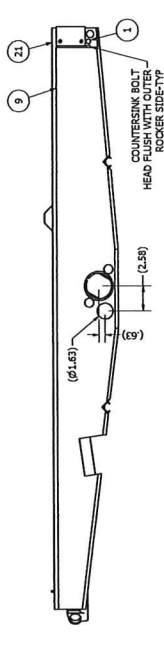
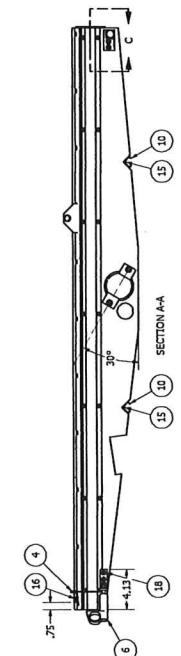
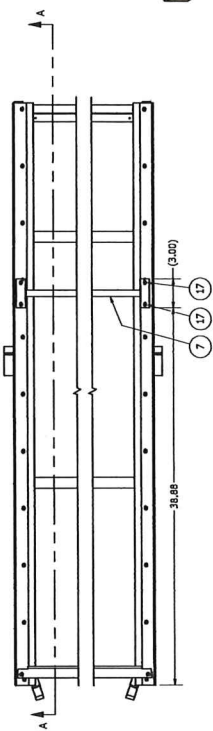
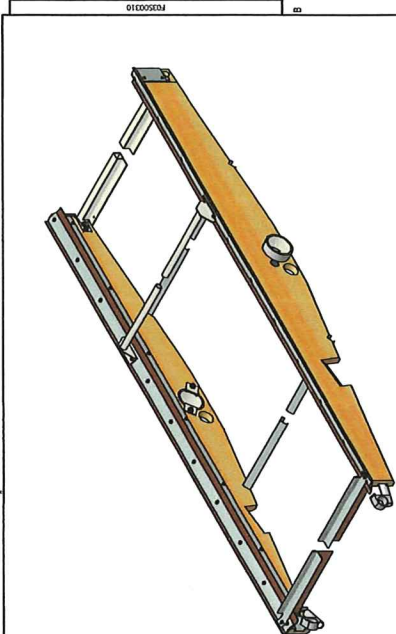
F92441083, 7475 complete assembly, NOT AVAILABLE

# Eccentric shaft assembly, Super 49,498, page 16





REV	DESCRIPTION	DATE	APPROVED
A	ADDED COUNTERSINK BOLT HEAD FLANGES	3/17/2012	dmj
B	REWORKED COUNTERSINK BOLT HEAD FLANGES	3/17/2012	dmj
C	ADDED DEPICTION OF BRUSH HOLE (SIZE AND LOCATION)	4/9/2013	dmj

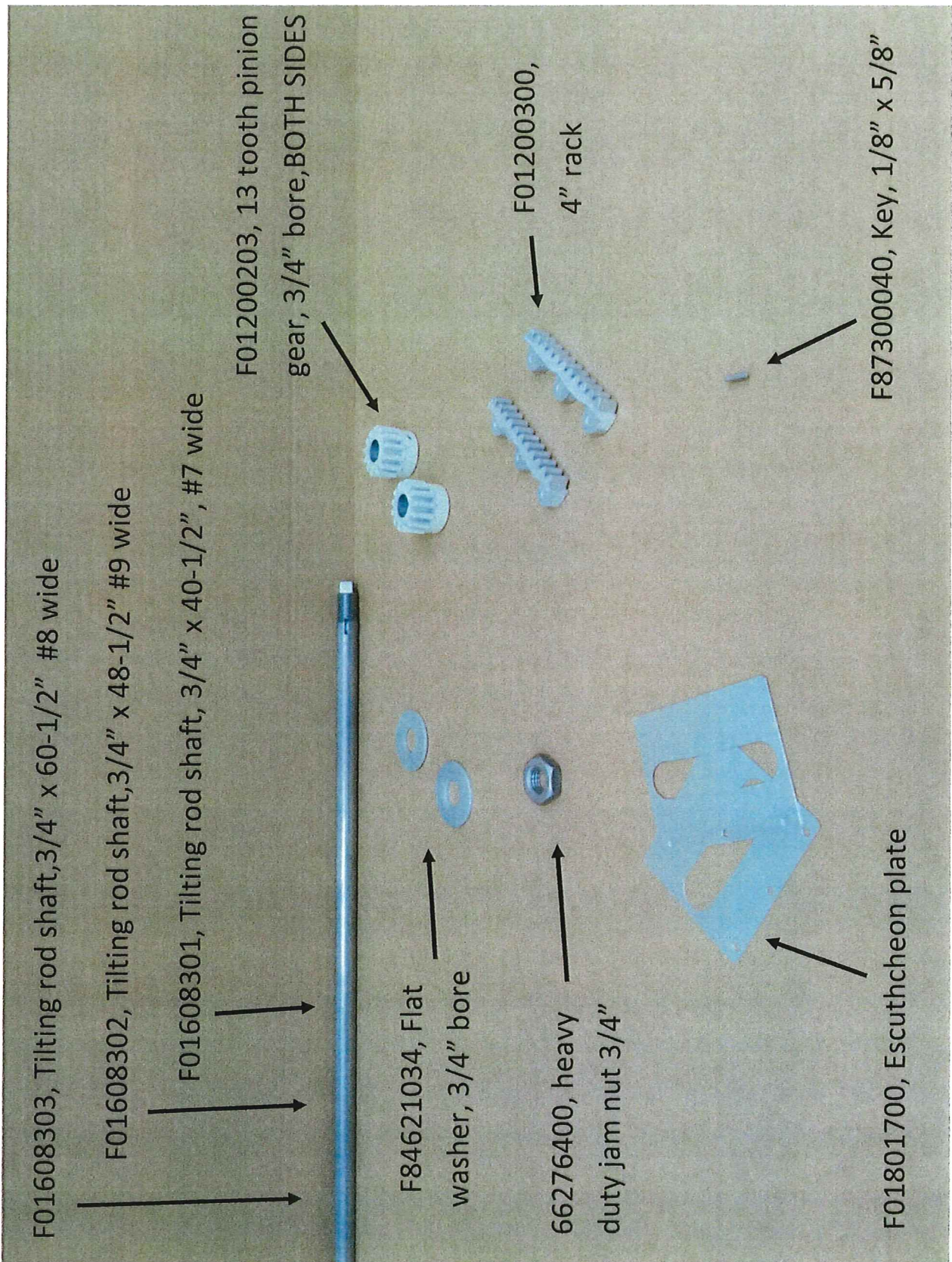


ITEM	PART NUMBER	QTY	DESCRIPTION
21	F91152006	10.333	R BELTING, 3 PLY, FPKS 2.50 X 62.00"
20	F90055303	1	GIRT WLDMT, ROCKER ADJ, TELESCOPING, #8
19	F9421222	8	SKS, FLY X HD, #8 X 3/4"
18	F9352403	8	SKS, FLY X HD, #8 X 3/4"
17	F9352403	54	SKS, PAN X HD, #8 X 3/4"
16	F9352403	2	SKS, PAN X HD, #8 X 1.00"
15	F9352403	4	SKS, FLAT CROSS HEAD #10 X 1.50"
14	F90221907	4	BOLT, ELEV. 1/4-20 X 1.25"
13	F93856000	2	ANGLE, SCREEN STOP, ROCKER
12	F93856000	2	CAP, RUBBER HOLDING, ROCKER, 60.00"
11	F93856000	2	LINE, SCREENWAY, ROCKER, 60.00"
10	F93856000	2	ROCKER, RH BOTTOM, BOTTOM SHOE, 288D
9	F93856000	1	SIDE ROCKER, LH BOTTOM, BOTTOM SHOE, 288D
8	F93856000	1	GIRT WLDMT, PIPE, ROCKER #8
7	F93856000	2	SCREEN HOOK ASSY, STANDARD
6	F93856000	2	CUP WLDMT, ROCKER, HEAVY DUTY BRUSH
5	F93856000	1	GRAIN STOP ASSY, ROCKER, 2.50" X #8
4	F93856000	4	NUT, HEX, SSER, LOCK, 10-24
3	F93856000	4	WASHER, SSER, LOCK, 10-24
2	F93856000	4	BOLT, CARB. 10-24 X 1.25"

**CAD**  
 This drawing is the property of Fernal Company, Inc. and must be returned to the originator if lost, stolen, or otherwise disposed of by any means.  
 No part of this drawing may be reproduced, stored in a retrieval system or transmitted in any form or by any means, electronic, mechanical, photocopying, recording, or otherwise, without the prior written permission of Fernal Company, Inc.

DATE: 10/28/2008  
 TIME: 4:45  
 DRAWN BY: NONE  
 CHECKED BY: 6.16:1  
 APPROVED BY: dmj  
 PART NUMBER: P935060310  
 SHEET: 1 of 1

NOTES:  
 1. DO NOT SCALE FROM DRAWING.  
 2. ONE PIECE REQUIRED PER P93856000/IS-SHOE ASSY, BOTTOM LH/RH W/ROCKERS, 288D.



F01608303, Tilting rod shaft, 3/4" x 60-1/2" #8 wide

F01608302, Tilting rod shaft, 3/4" x 48-1/2" #9 wide

F01608301, Tilting rod shaft, 3/4" x 40-1/2", #7 wide

F01200203, 13 tooth pinion gear, 3/4" bore, BOTH SIDES

F84621034, Flat washer, 3/4" bore

66276400, heavy duty jam nut 3/4"

F01200300, 4" rack

F01801700, Escutcheon plate

F87300040, Key, 1/8" x 5/8"

# Screen rocker adjusting assembly

# Bottom Fan Metal

