

**SERVICE MANUAL**  
**AND**  
**PARTS CATALOG**  
**FOR YOUR**  
**SUPER 49A**



*Grain, Seed and Bean Cleaners*

# SUPER 49A CLEANER PARTS SET UP WITH BRUSH SCREEN CLEANING

## BRUSH SCREEN CLEANING SYSTEM

ITEM NO.	PAGE NO.	PART NUMBER	QTY.	DESCRIPTION
39	7	F01003001	2	Brush Adjusters-Control Side / <b>Left Hand Side(Includes Parts Below)</b>
	7	F01106101	1	Brush Idler Plate Left Hand
42	7	F01105400	1	Adjustments Handle with Spring
42	7	F82080060	1	Shoulder Bolt for Brush Adjuster
38	7	F01004902	2	Brush Adjusters - Idler Side / <b>Right Hand Side(Includes Parts Below)</b>
	7	F01106104	1	Brush Adjusting Plate Right Hand
43	7	F01106300	1	Idler Arm Support
43	7	F82080060	1	Shoulder Bolt for Brush Adjuster
39	7	F01003002	2	Brush Adjusters-Control Side / <b>Right Hand Side(Includes Parts Below)</b>
**	7	F01106003	1	Brush Idler Plate Right Hand
42	7	F01105400	1	Adjustments Handle with Spring
42	7	F82080060	1	Shoulder Bolt for Brush Adjuster
38	7	F01004901	2	Brush Adjusters - Idler Side / <b>Left Hand Side (Includes Parts Below)</b>
		F01106001	1	Brush Adjusting Plate Left Hand
43	7	F01106300	1	Idler Arm Support
43	7	F82080060	1	Shoulder Bolt for Brush Adjuster
		F01000200	8	Rope Sheave Assembly Complete <b>See attached picture</b>
		F09500200	2	Brush Carrier Assembly 18" x 46" <b>See attached picture 10</b>
		F01612101	2	Brush Carrier Shafts 1-3/16" x 52"
		F97700063	40	Wirelon Plastic Coated Steel Cable ( <b>In Feet</b> )

## BOTTOM FAN ASSEMBLY

ITEM NO.	PAGE NO.	PART NUMBER	QTY.	DESCRIPTION
		F01612410	1	Fan Shaft 1-1/2" X 62-1/2" <b>(Includes Keys)</b> <b>See attached picture 11 &amp; 12</b>
		<b>Not Available</b>	2	6715 Halfmoon Bridgetree Housing with Bearing
		F92400022	2	Bearing <b><u>Insert Only</u></b> for Above
		<b>Note: If housing is bad Items below must be substituted</b>		
		F92401080	2	1-1/2" Pillow Block Bearing
		F02707300	2	Bridgetree Mounting Angle for Bearing
201	25	F06302020	1	Bottom Drum Iron 42-5/8" x 80"
203	25	F06302120	1	Discharge Chute 4"
204	25	F06304303	1	Breast Iron 42-5/8" x 26-1/2"

## ECCENTRIC SHAFT ASSEMBLY

ITEM NO.	PAGE NO.	PART NUMBER	QTY.	DESCRIPTION
		F01623500	1	Eccentric Shaft 1-1/2" X 66-1/2" <b>(Includes Keys)</b> <b>See attached pictures 15 &amp; 16</b>
		<b>Not Available</b>	2	6714 Halfmoon Flange Bearing
		F92400022	1	1-1/2" Bearing <b><u>Insert Only</u></b> for Below
		F92053126	1	6714 Flange Bearing Conversion Kit
		<b>Not Available</b>	1	7475 1-1/2" Halfmoon Bearing Complete w/Bearing
		F92400026	1	1-1/2" Halfmoon Bearing <b><u>Insert Only</u></b> for Above
		F19503600	2	1-1/2" Throw Eccentric Assembly Complete <b>See attached picture 15B</b>

**NOTE: A FEW OF THE NEWER MACHINES HAD COUNTERWEIGHTS ADDED  
TO THE ECCENTRIC SHAFT**

F01104600	4	Counterweight Ends
F01804410	2	Counterweight 11"

## MAIN SHOE ASSEMBLY

ITEM NO.	PAGE NO.	PART NUMBER	QTY.	DESCRIPTION
		Not Available	1	Bottom Shoe Complete with <b>Rockers Right Hand (F03006105)</b> <b>See attached drawing</b>
		F03500400	1	Apron Assembly
		F08308302	1	Sand Spout Left Hand Machines ( <b>Check Measurements</b> )
		F08308301	1	Sand Spout Right Hand Machines ( <b>Check Measurements</b> )
		F08302230	1	Straw Spout Left Hand Machines ( <b>Check Measurements</b> )
		F08302200	1	Straw Spout Right Hand Machines ( <b>Check Measurements</b> )
		F01200203	4	Rocker adjusting system <b>See attached picture</b>
		F03500200	1	Top Rocker Assembly Complete <b>See attached drawing</b>
		F03500300	1	Bottom Rocker Assembly Complete <b>See attached drawing</b>
		F03016510	2	Front Hanger with Block on Both Sides
		F03102601	2	Shoeside Hanger Support Block
		F03016520	3	Back Shoe Hanger with Block

**Discharge Spouts are Determined by Standing at the Front and Facing the Machine.  
Right Hand Discharge Spouts Would Discharge Towards Your Right Hand.**

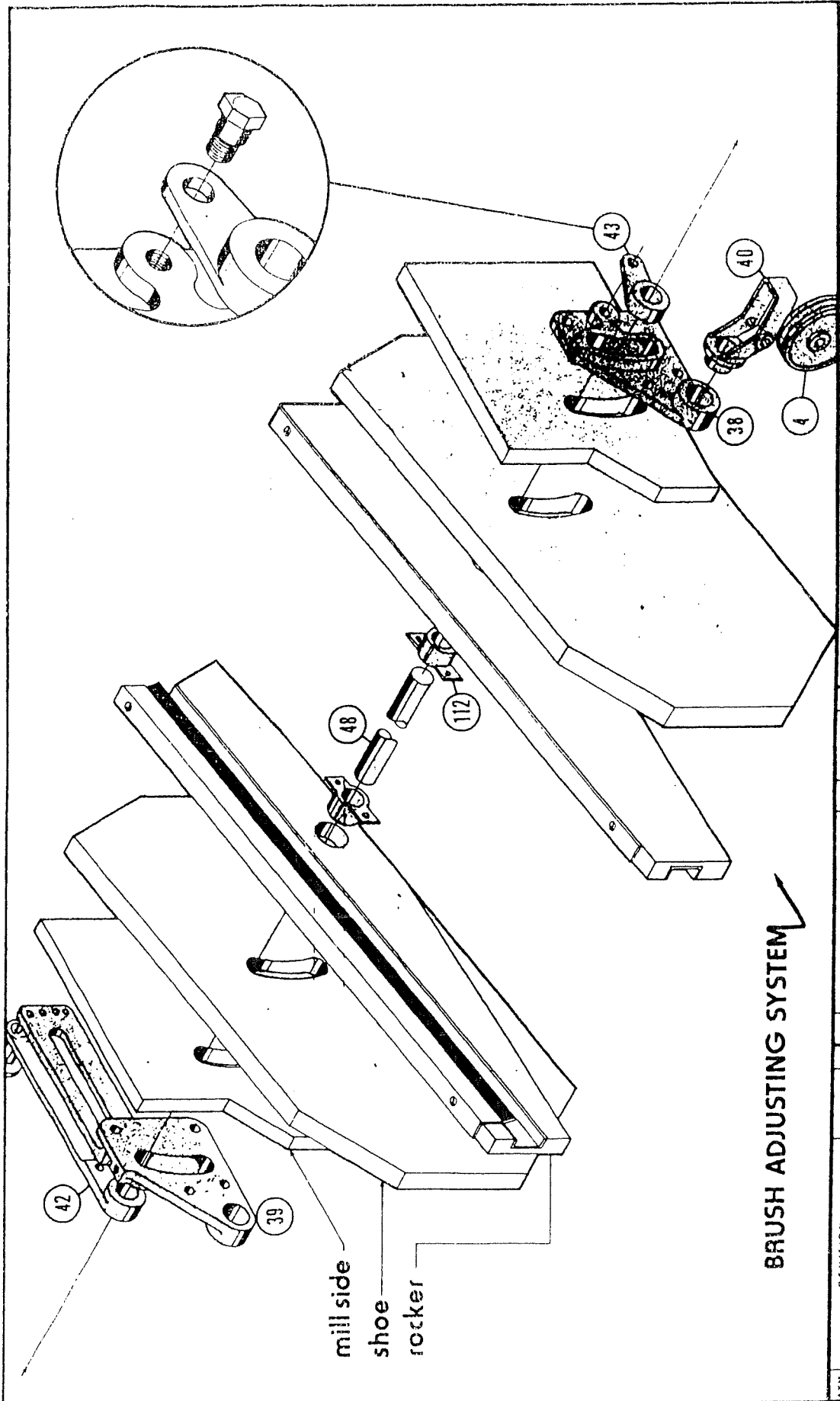
F01002803	1	Single Belt Idler Assembly Complete 5-1/2" <b>See attached drawing</b>
-----------	---	---

**The Following Are the Ball Tray Kit Parts That were  
Installed on the Super 49 Cleaners in the Past**

**Old Style Ball Trays with 1" Square Turkey Wire That Came Out  
With the Screens. Ball Trays were not attached to the Screens.**

F90005062	2	Ball Tray Weldment for 1 Piece Screens <b>(NEW PUNCHED STYLE)</b>
F80026102	216	White 1-3/8" Balls
		or
F90005063	2	Ball Tray Weldment for 2 Piece Screens (Bottom 26" Section) <b>(NEW PUNCHED STYLE)</b>
F90005069	2	Ball Tray Weldment for 2 Piece Screens (For Top 34" Section) <b>(NEW PUNCHED STYLE)</b>
F80026102	216	White 1-3/8" Balls ( 54 Per Tray)
F11301707	4	Ball Tray Support Rail 24"
F11301708	4	Ball Tray Support Rail 31"

BLVD PRINT SUPPLY AND SERVICE

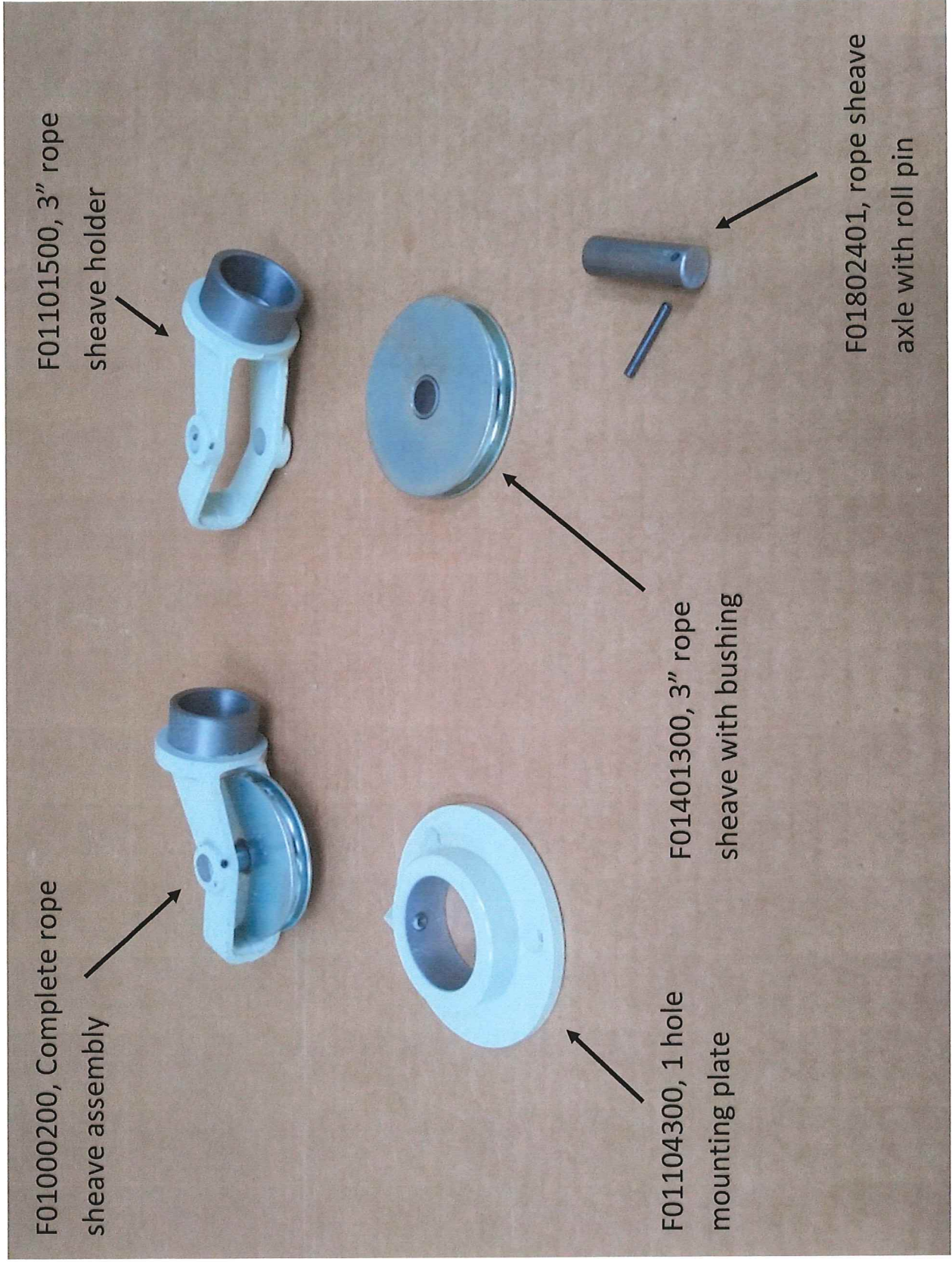


**BRUSH ADJUSTING SYSTEM**

SYN	REVISION	DATE	DR.	DWG. BY	SCALE	DATE

**brush adjusting system**

FERRELL - ROSS  
 SAGINAW, MICH.  
 MACH. NO.  
 DWG. NO.



F01000200, Complete rope sheave assembly

F01101500, 3" rope sheave holder

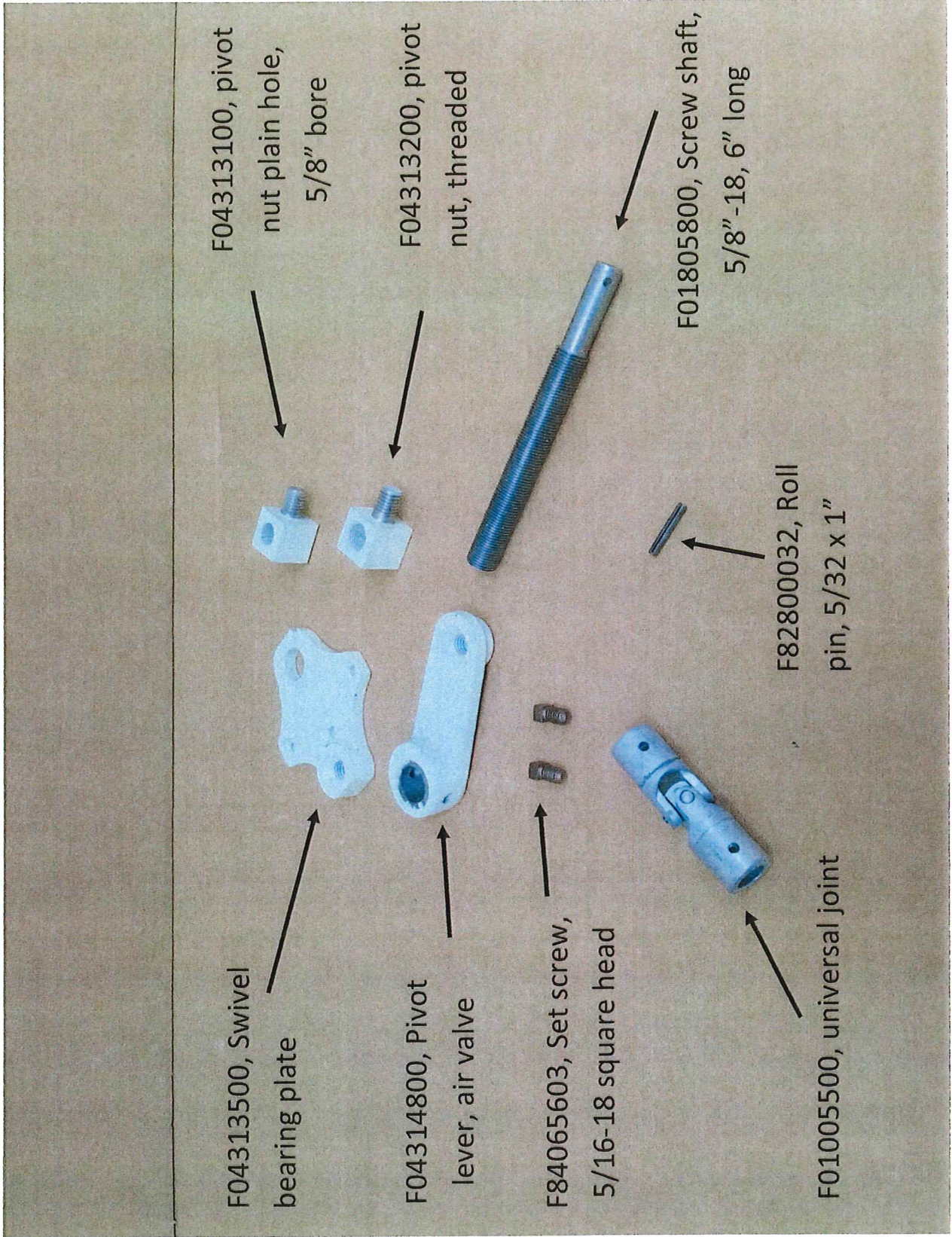
F01104300, 1 hole mounting plate

F01401300, 3" rope sheave with bushing

F01802401, rope sheave axle with roll pin

## 3" Rope sheave assembly





# F01013500, Gate valve adjusting assembly, ALL

F01103300, cast pillow  
block mounting block



F01806202, stub  
shaft, 1" x 5-1/2"



F01100100,  
pivot lever



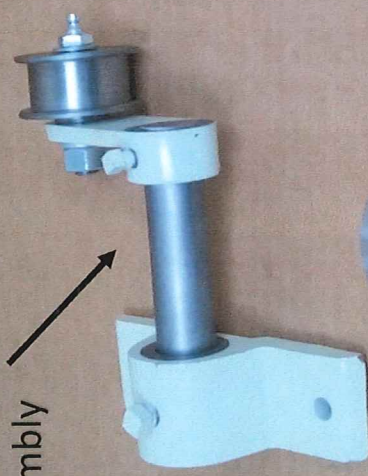
66085200, 1/2-13  
hex nut



66445200, 1/2"  
lock washer



F01002803, complete  
1 belt idler assembly



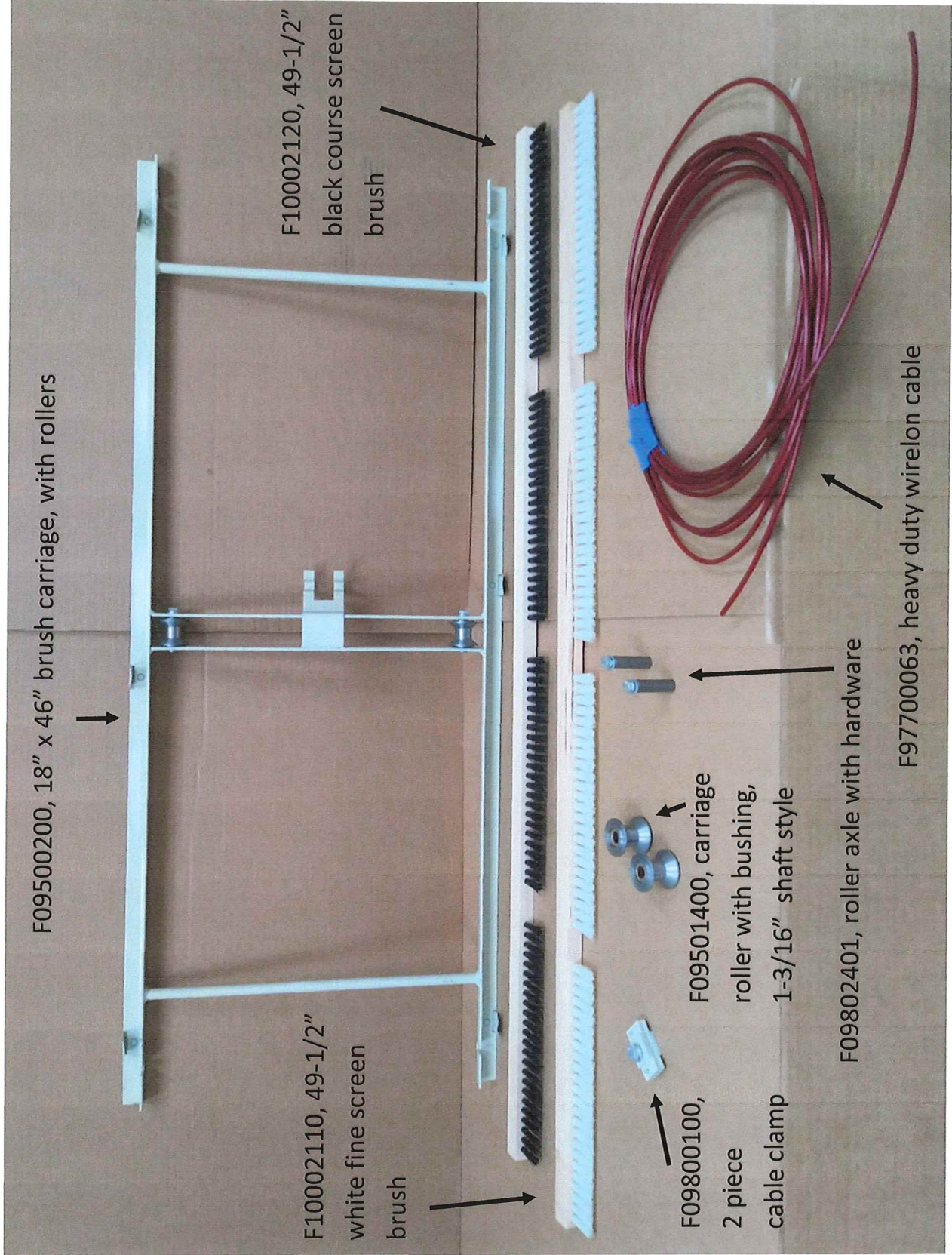
F01400700, belt tightener  
sheave with bushing



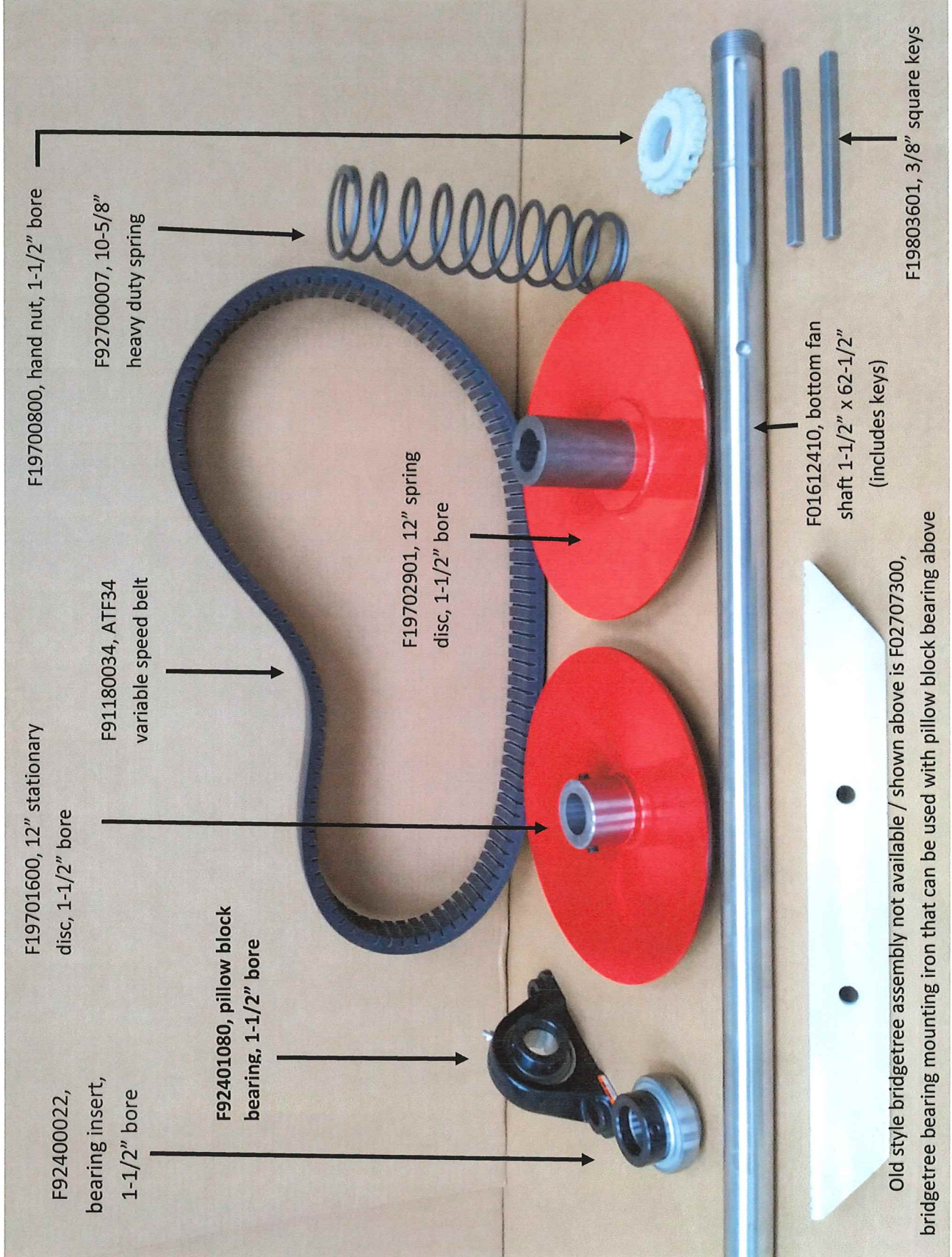
F01805010, belt tightener  
axle with zerck



# Belt tightener assembly



Brush carriage, with accessories, page 10



F19700800, hand nut, 1-1/2" bore

F92700007, 10-5/8" heavy duty spring

F19701600, 12" stationary disc, 1-1/2" bore

F91180034, ATF34 variable speed belt

F19702901, 12" spring disc, 1-1/2" bore

F92400022, bearing insert, 1-1/2" bore

F92401080, pillow block bearing, 1-1/2" bore

F01612410, bottom fan shaft 1-1/2" x 62-1/2" (includes keys)

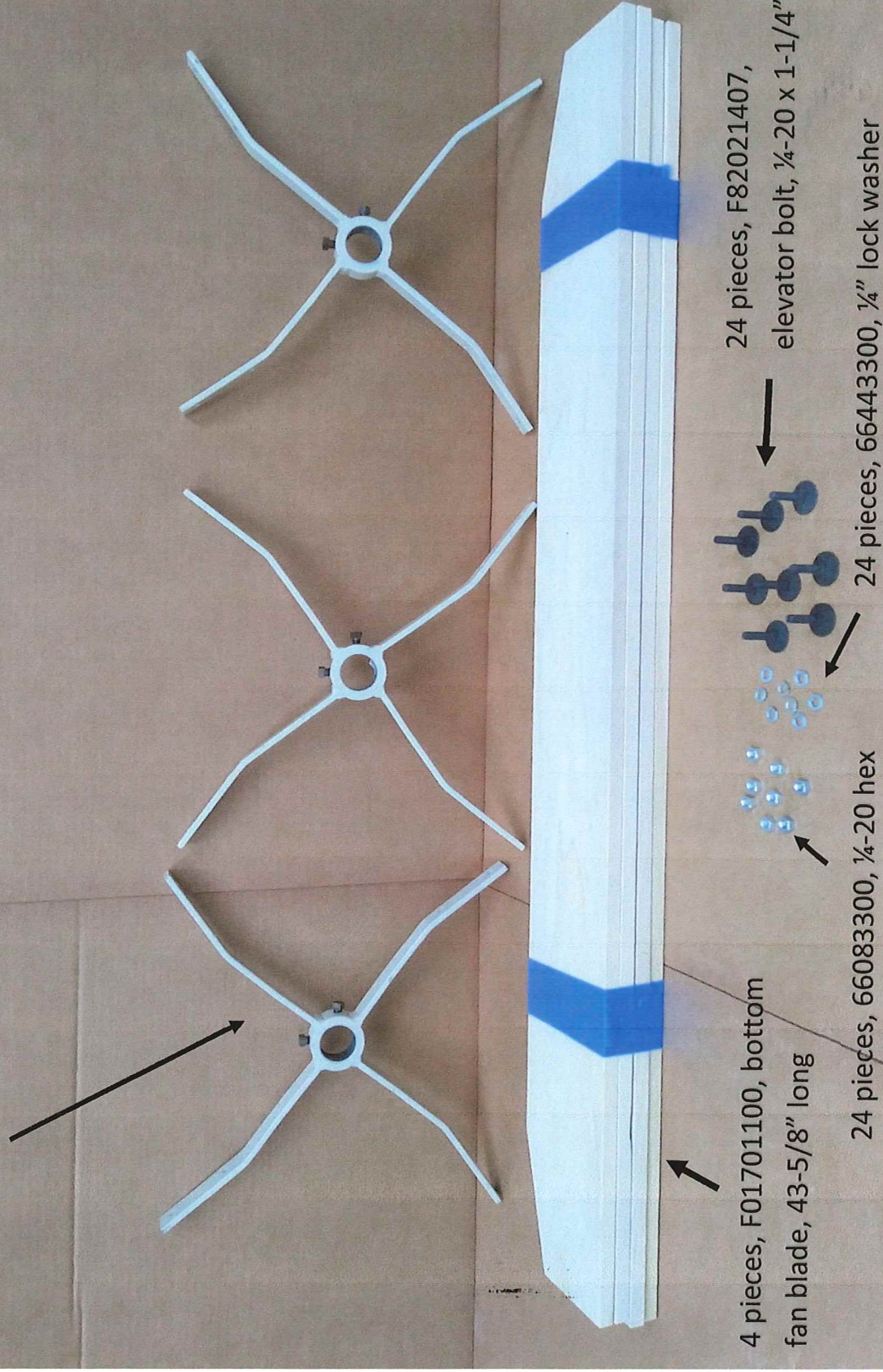
F19803601, 3/8" square keys

Old style bridgetree assembly not available / shown above is F02707300, bridgetree bearing mounting iron that can be used with pillow block bearing above

# Bottom fan shaft assembly, page 11

3 pieces, F06001000, bottom fan spider, 1-1/2" bore

F06002681, complete bottom fan assembly



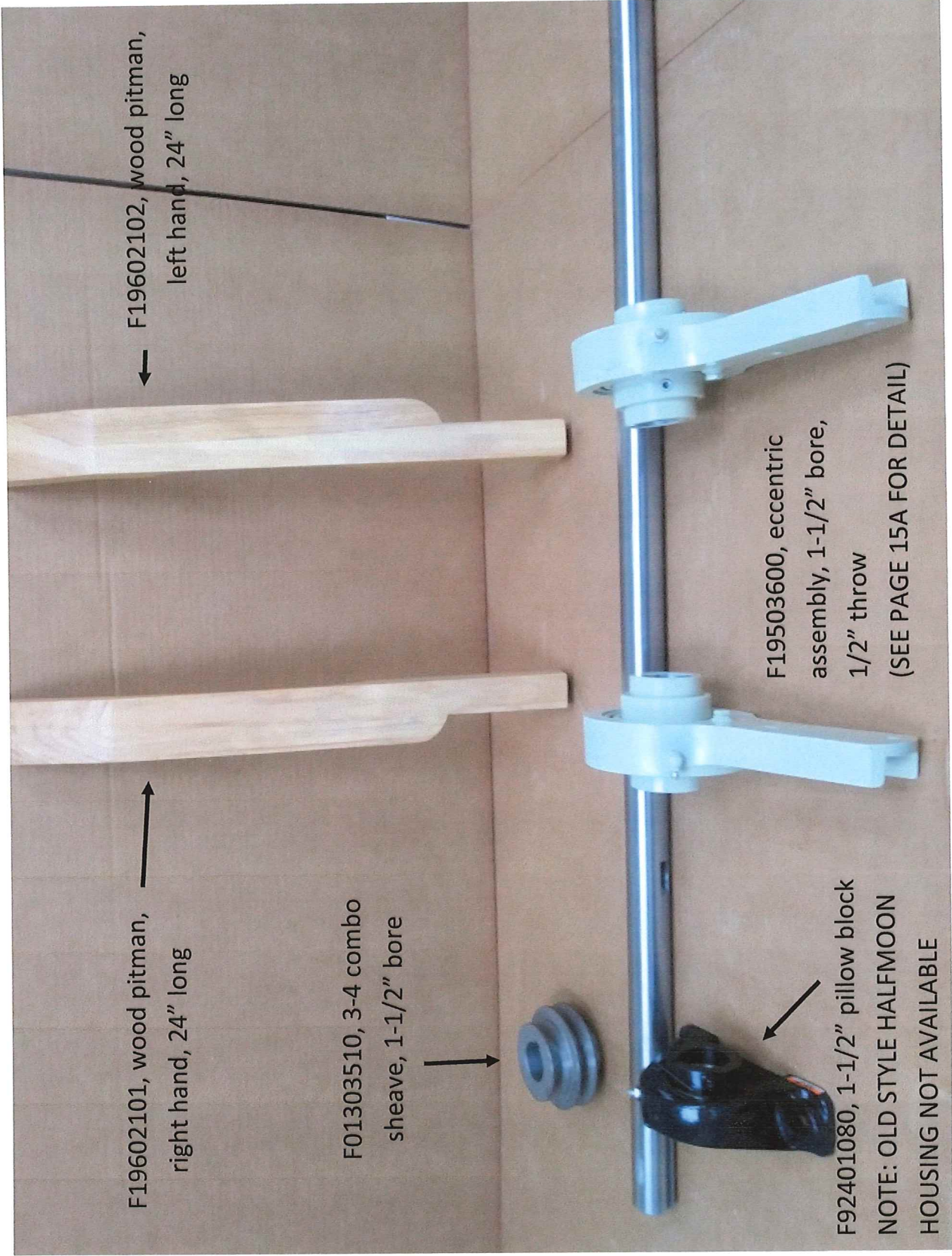
4 pieces, F01701100, bottom fan blade, 43-5/8" long

24 pieces, F82021407, elevator bolt, 1/4-20 x 1-1/4"

24 pieces, 66083300, 1/4-20 hex

24 pieces, 66443300, 1/4" lock washer

bottom fan assembly, 1-1/2" bore, 9 wide, page 12



F19602101, wood pitman,  
right hand, 24" long

F19602102, wood pitman,  
left hand, 24" long

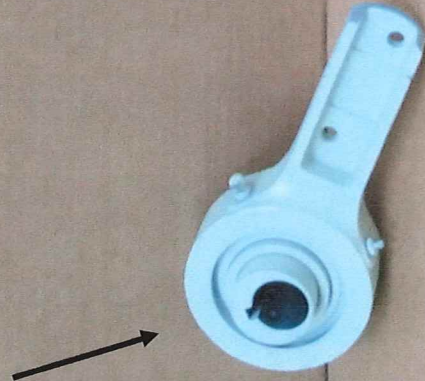
F01303510, 3-4 combo  
sheave, 1-1/2" bore

F92401080, 1-1/2" pillow block  
NOTE: OLD STYLE HALFMOON  
HOUSING NOT AVAILABLE

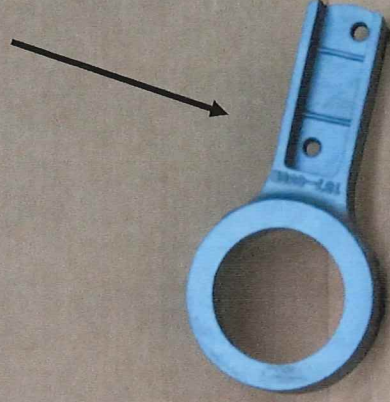
F19503600, eccentric  
assembly, 1-1/2" bore,  
1/2" throw  
(SEE PAGE 15A FOR DETAIL)

# Eccentric shaft, wood pitmans, page 15

F19503600, Complete eccentric  
assembly, 1-1/2" bore, 1/2" throw



F19703000, Eccentric  
housing



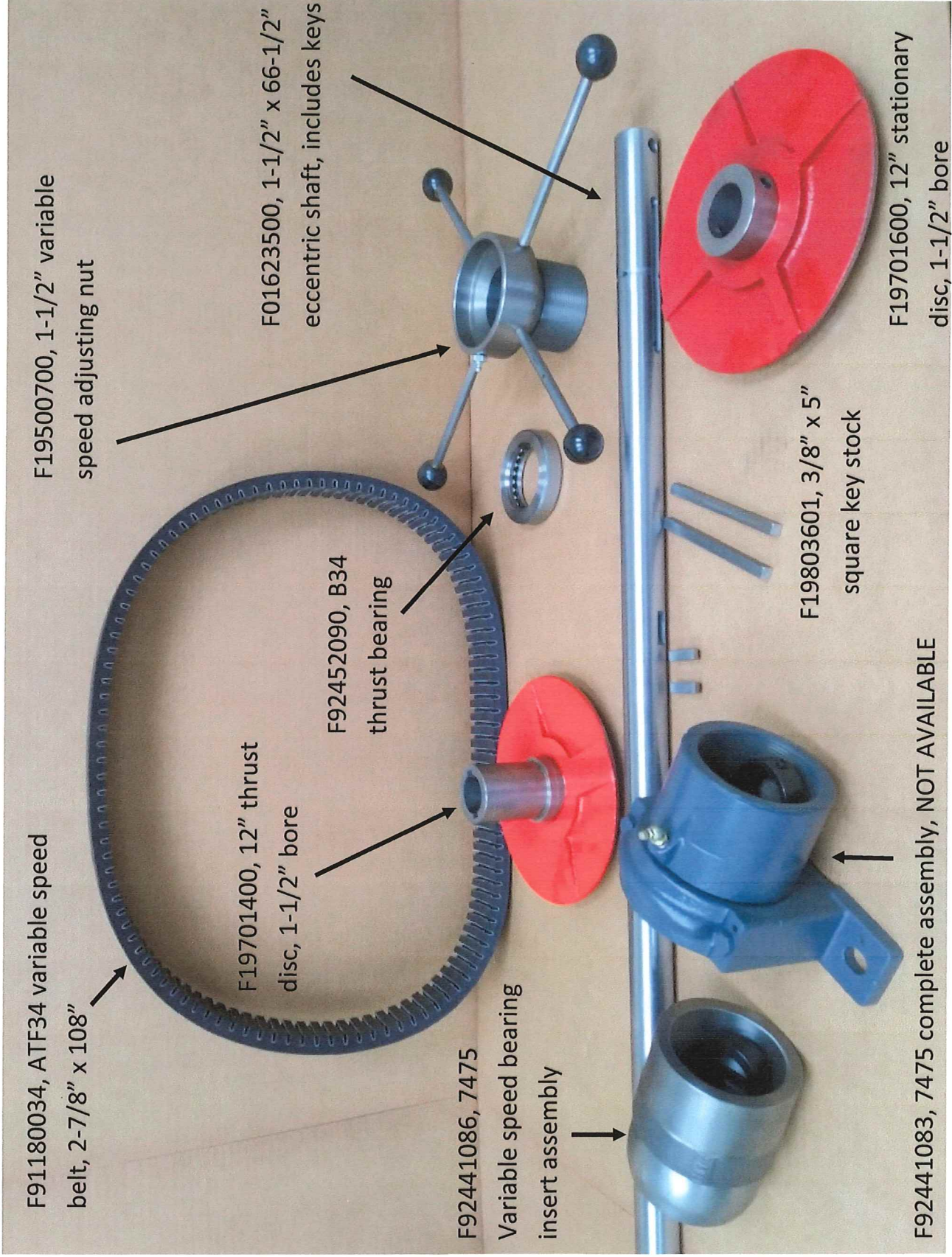
F19804004, Eccentric hub,  
1-1/2" bore, 1/2" throw



F92400053, Bearing  
insert



## Eccentric assembly, page 15B



F91180034, ATF34 variable speed belt, 2-7/8" x 108"

F19500700, 1-1/2" variable speed adjusting nut

F19701400, 12" thrust disc, 1-1/2" bore

F01623500, 1-1/2" x 66-1/2" eccentric shaft, includes keys

F92452090, B34 thrust bearing

F92441086, 7475 Variable speed bearing insert assembly

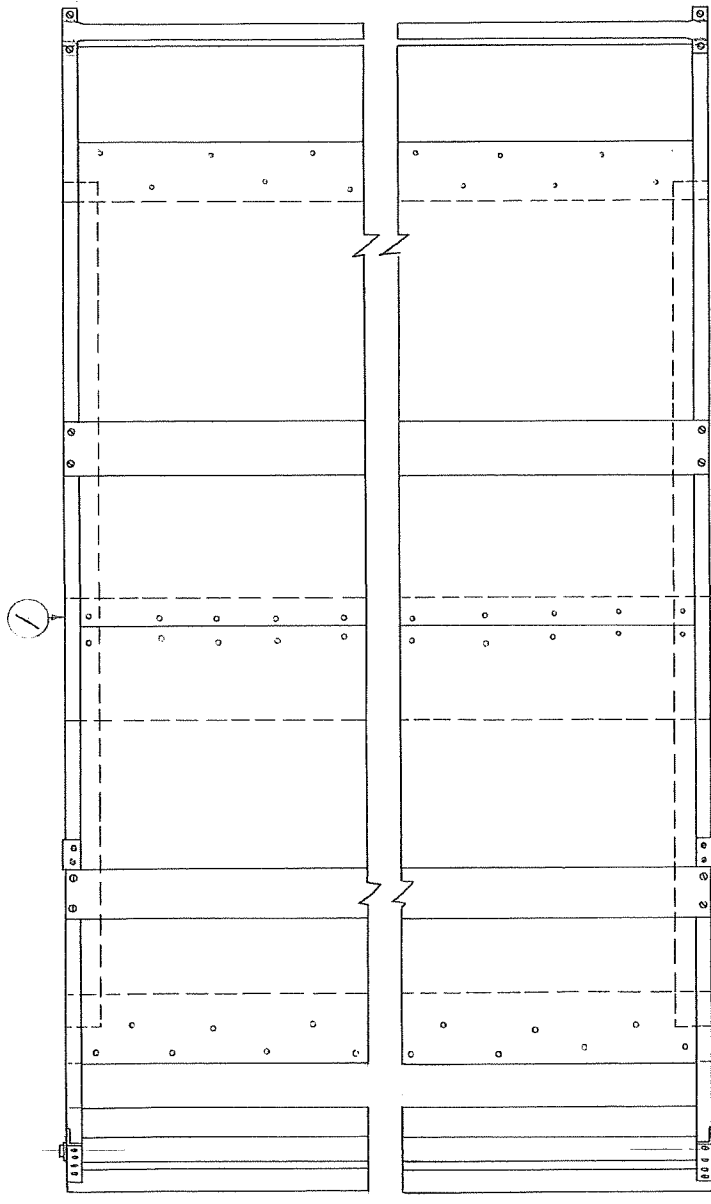
F19803601, 3/8" x 5" square key stock

F19701600, 12" stationary disc, 1-1/2" bore

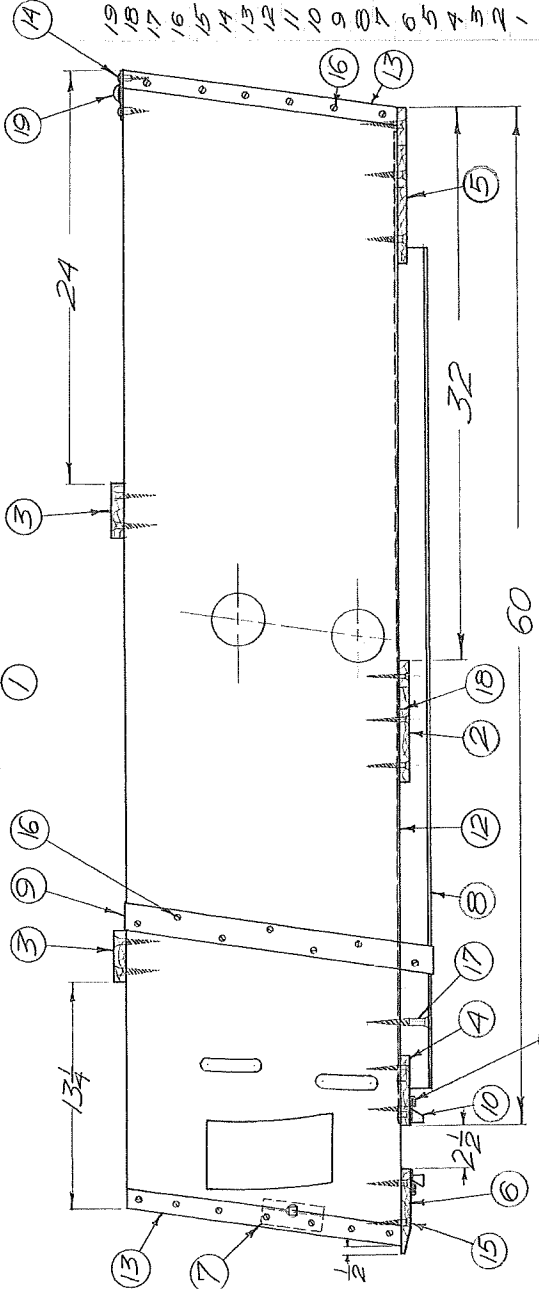
F92441083, 7475 complete assembly, NOT AVAILABLE

# Eccentric shaft assembly, Super 16





MACH. NO.	QTY	DESCRIPTION	MATERIAL	REMARKS
19	1	PIPE GIRT ASSY.		
18	70	1/2" 14 NAILS		
17	12	2" 10 WOODSCREW	FLAT HD.	
16	36	5/8" 8 WOODSCREW	FLAT HD.	
15	30	1 1/2" 10 WOODSCREW	FLAT HD.	
14	4	3/4" 8 WOODSCREW	RD. HD.	
13	33-003	END IRON STL.		
12	33-122-2	SHOE BOTTOM METAL SH STL.		
11	33-123-2	SPOUT GUIDE PINE		
10	31-162-2	SPOUT TRACK PINE		
9	33-095	SIDE BRACE STL.		
8	31-163	SHOE RUNNER OAK		
7	31-164-2	CROSS GIRT PINE		
6	31-165-2	SHOE NOSING PINE		
5	31-169-3	FRONT BOARD PINE		
4	31-169-2	SPOUT BOARD PINE		
3	31-169-1	TOP BOARD PINE		
2	31-167-2	PITMAN PINE		
1	31-168	SHOE SIDE OAK L.H. & R.H.		



MACH. NO.	QTY	DESCRIPTION	MATERIAL	REMARKS
19	1	PIPE GIRT ASSY.		
18	60	1/2" 14 NAILS		
17	12	2" 10 WOODSCREW	FLAT HD.	
16	36	5/8" 8 WOODSCREW	FLAT HD.	
15	30	1 1/2" 10 WOODSCREW	FLAT HD.	
14	4	3/4" 8 WOODSCREW	RD. HD.	
13	33-003	END IRON STL.		
12	33-122-1	SHOE BOTTOM METAL SH STL.		
11	33-123-1	SPOUT GUIDE SH STL.		
10	31-162-1	SPOUT TRACK PINE		
9	33-095	SIDE BRACE STL.		
8	31-163	SHOE RUNNER OAK		
7	31-164-1	CROSS GIRT PINE		
6	31-165-1	SHOE NOSING PINE		
5	31-166-3	FRONT BOARD PINE		
4	31-166-2	SPOUT BOARD PINE		
3	31-166-1	TOP BOARD PINE		
2	31-167-1	PITMAN BOARD PINE		
1	31-168	SHOE SIDE OAK L.H. & R.H.		

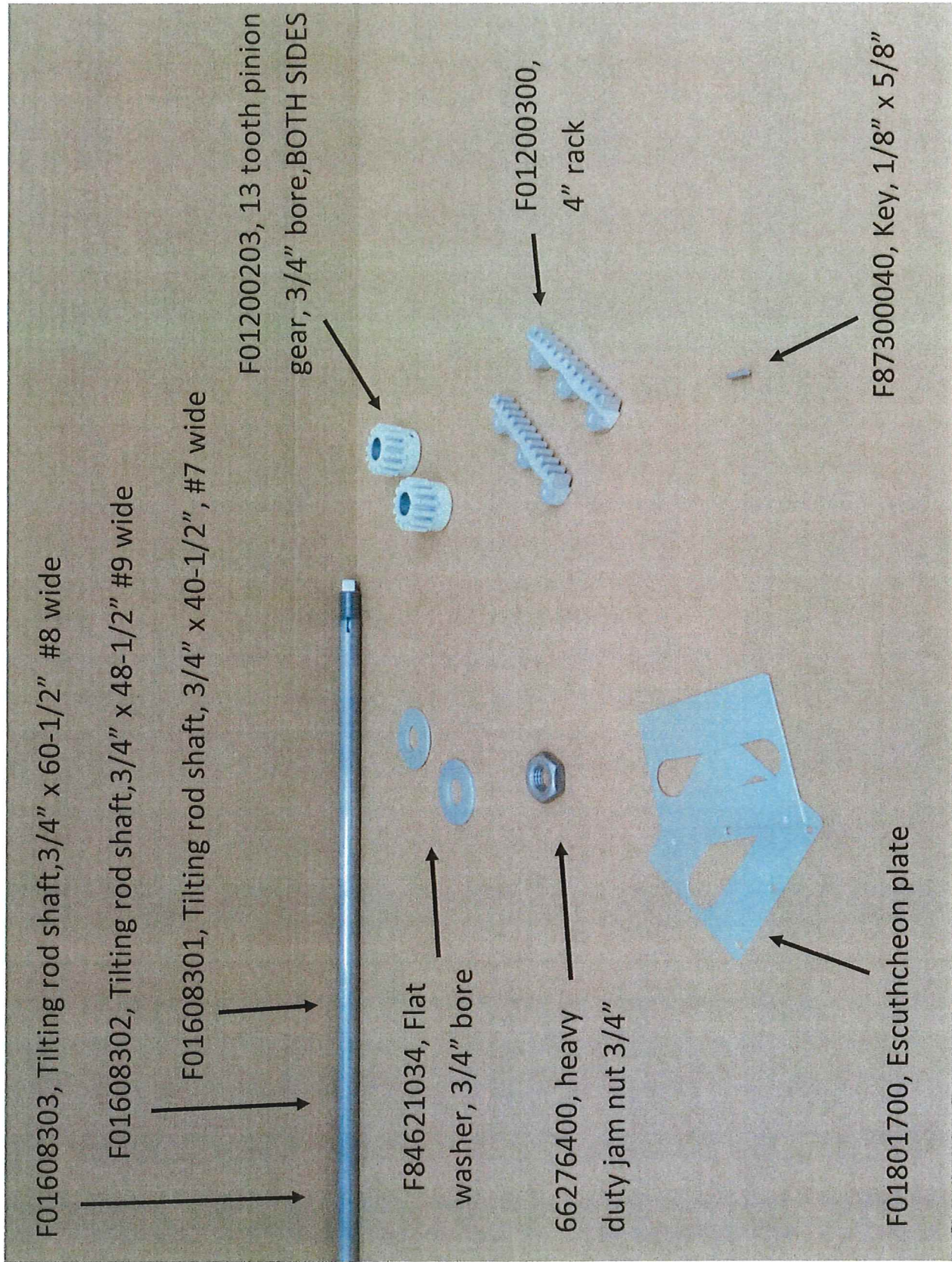
NOTE  
FOR SHOES WITH ROCKERS INCLUDED USE:  
#9 WIDE  
L.H. - \*30-061-4B  
R.H. - \*30-061-5B  
#8 WIDE  
L.H. - \*30-061-6B  
R.H. - \*30-061-7B

#9 WIDE  
L.H. AS SHOWN - \*30-061-B  
R.H. OPPOSITE - \*30-061-B  
#8 WIDE  
L.H. AS SHOWN - \*30-061-2B  
R.H. OPPOSITE - \*30-061-3B

MICROFILMED

DATE	BY	SCALE	CHK. BY
9-13-57	ST	1/2" = 1'-0"	
A. T. FERRELL & CO. 49-49 BOSTON, MASS.			
MACH. NO. 49-D			
SHEET NO. 30-061			

ASSSEMBLED SHOE



F01608303, Tilting rod shaft, 3/4" x 60-1/2" #8 wide

F01608302, Tilting rod shaft, 3/4" x 48-1/2" #9 wide

F01608301, Tilting rod shaft, 3/4" x 40-1/2" , #7 wide

F01200203, 13 tooth pinion gear, 3/4" bore, BOTH SIDES

F84621034, Flat washer, 3/4" bore

66276400, heavy duty jam nut 3/4"

F01200300, 4" rack

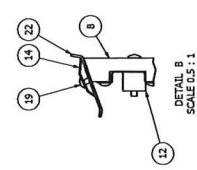
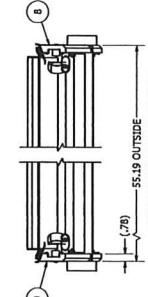
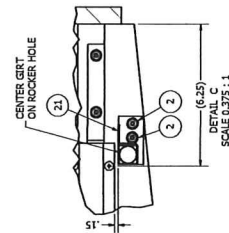
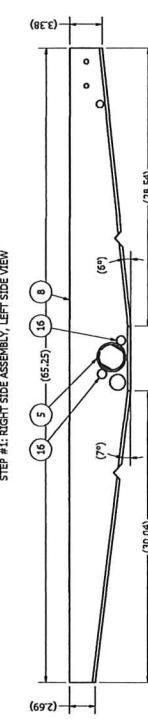
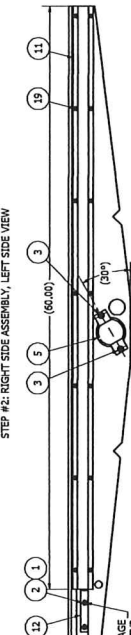
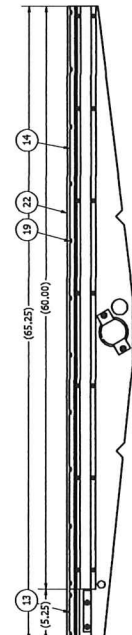
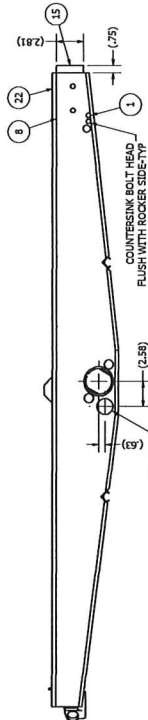
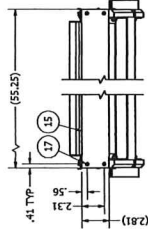
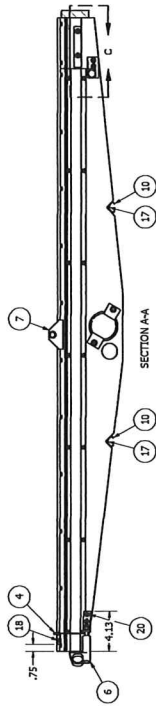
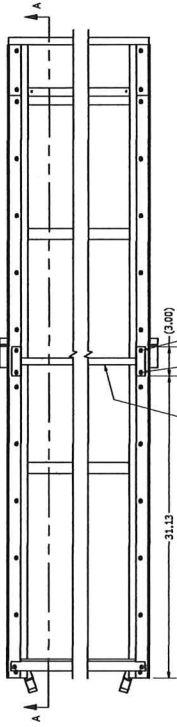
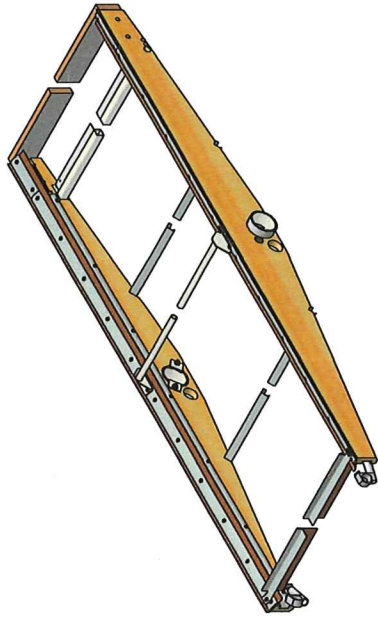
F87300040, Key, 1/8" x 5/8"

F01801700, Escutcheon plate

## Screen rocker adjusting assembly

REV	CON	DESCRIPTION	DATE	APPROVED
A	AK	REVISED	2/1/2013	amphibian
B	AK	REWORKING CAD, WAS C SIZE	11/29/2012	amphibian
C	AK	PROVIDING WAS P90005003, ADD F11307269	12/5/2012	amphibian
D	AK	INDICATE ROCKER CUPS 30 DEG, ADD P03505800, 60282628 & 66726600 WAS P844540210	4/11/2013	amphibian

REVISION HISTORY	DATE	APPROVED
REVISED	2/1/2013	amphibian
REWORKING CAD, WAS C SIZE	11/29/2012	amphibian
PROVIDING WAS P90005003, ADD F11307269	12/5/2012	amphibian
INDICATE ROCKER CUPS 30 DEG, ADD P03505800, 60282628 & 66726600 WAS P844540210	4/11/2013	amphibian



ITEM	PART NUMBER	QTY	DESCRIPTION
22	F01152005	2	BELTING, 3 PLY FIBERS 2.50 X 66.25"
21	F00005004	1	GRY WALDMT, ROCKER ADJ, TELESCOPING, #8
20	F03454303	4	SHK5, PAN X HD, #10 X 3/4"
19	F03454302	58	SHK5, PAN X HD, #8 X 3/4"
18	F03454301	2	SHK5, PAN X HD, #8 X 1.00"
17	F03454300	8	SHK5, PAN X HD, #8 X 1.50"
16	F11307269	4	BRG, 1.125 X 1.125 X 1.50"
15	F11307265	1	BOARD, REAR SPOUT, GR7, 2.81", S48BD
14	F03801100	2	CAP, RUBBER HOLDING, ROCKER, 6.00"
13	F03801100	2	CAP, RUBBER HOLDING, ROCKER, 6.00"
12	F03801100	2	STOP, SCREEN, .75 X 4.38"
11	F03600413	2	LINER, SCREENWAY, ROCKER, 60.00"
10	F03600001	2	BRACE, BOTTOM, ROCKER, #8
9	F03600200	1	ROCKER, BOTTOM, ROCKER, #8
8	F03600200	1	ROCKER, RA, TOP, BOTTOM SHOE, 28RD
7	F0282628	1	GRY WALDMT, PIPE, ROCKER #8
6	F03500800	2	SCREEN HOOK ASSY, STANDARD
5	F03500600	2	CUP WALDMT, ROCKER, HEAVY DUTY BRUSH
4	F03310008	1	GRAIN STOP ASSY, ROCKER, 2.50" X #8
3	66726600	4	INUT, HEX SERR LOCK, 1/4-20
2	60282628	8	INUT, HEX SERR LOCK, 1/4-20
1	66726600	6	BOLT, CAR, 10-34 X 1.25"

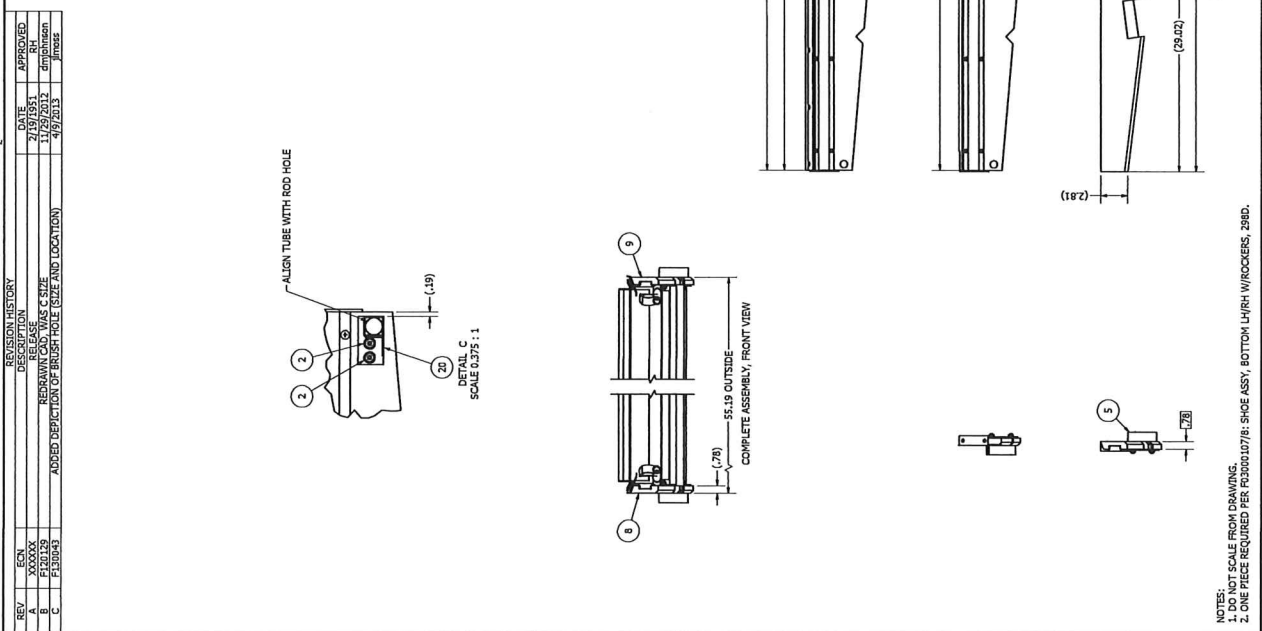
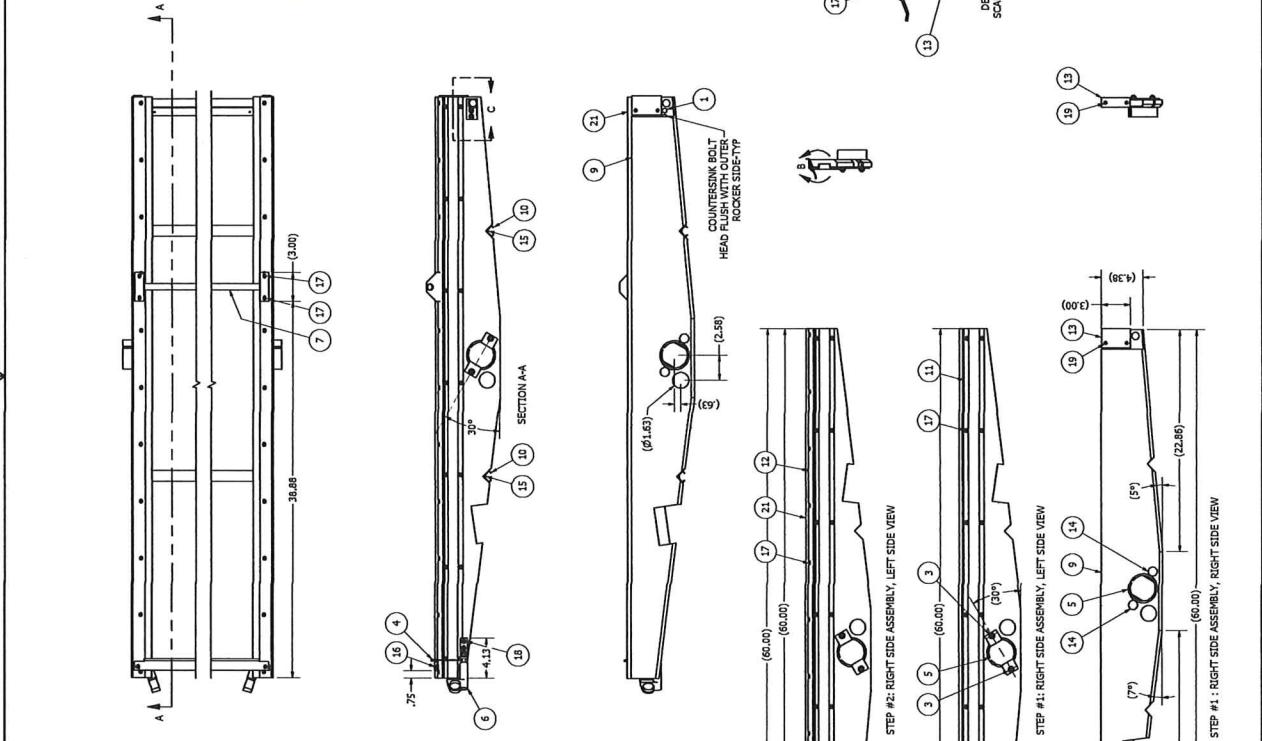
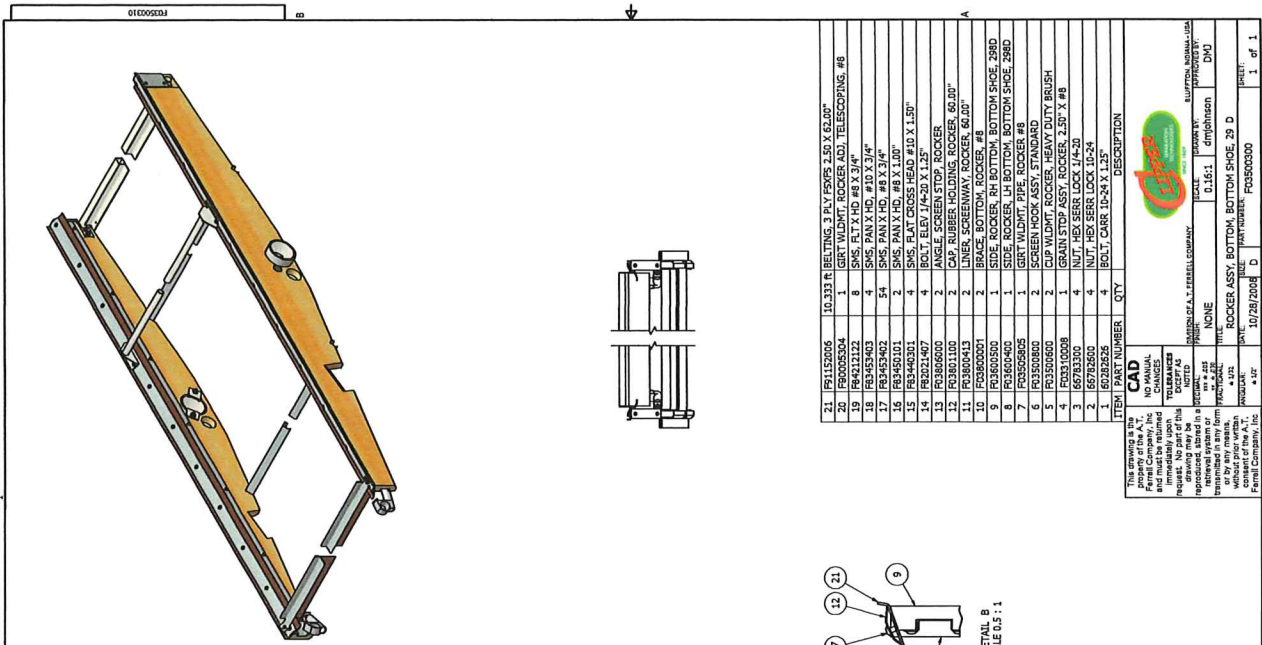
**CAD**  
 This drawing is the property of Ferrell Company, Inc. and must be returned to the originator upon request. No part of this drawing is to be reproduced, stored in a retrieval system or transmitted in any form or by any means, electronic, mechanical, photocopying, recording, or by any information storage and retrieval system without the prior written consent of Ferrell Company, Inc.

NO MANUAL CHANGES  
 DRAWING IS TO BE USED AS SHOWN  
 ALL DIMENSIONS ARE IN INCHES UNLESS OTHERWISE SPECIFIED  
 DIMENSIONS IN PARENTHESES ARE FOR INFORMATION ONLY  
 DIMENSIONS IN PARENTHESES ARE FOR INFORMATION ONLY

DATE: 10/28/2008  
 TITLE: ROCKER ASSY, TOP, BOTTOM SHOE, 28 D  
 PART NUMBER: F03500200  
 SCALE: 1:1  
 DRAWN BY: amphibian  
 CHECKED BY: amphibian  
 APPROVED BY: amphibian  
 PART NUMBER: F03500200  
 1 of 1

NOTES:  
 1. DO NOT SCALE FROM DRAWING  
 2. ONE PIECE REQUIRED PER P030030607: SHOE ASSY, BOTTOM RH W/ROCKERS, 28RD.  
 3. ONE PIECE REQUIRED PER P030030607: SHOE ASSY, BOTTOM LH/RH W/ROCKERS, 69A & D.

REV	CON	DESCRIPTION	DATE	APPROVED
A	ASSEMBLY	REBRANDED	11/29/2012	cmjohnson
B	ASSEMBLY	REBRANDED	11/29/2012	cmjohnson
C	ASSEMBLY	ADDED DEPICTION OF BRUSH HOLE (SIZE AND LOCATION)	4/9/2013	pmose



ITEM	PART NUMBER	QTY	DESCRIPTION
21	F01152006	10.333	R. BELTING, 3 PLY FIBER, 2.50 X 63.00"
20	F00005504	1	GRT. WLDMT. ROCKER ADJ. TELESCOPING, #8
19	FR4212122	8	SHS. R.T.X.HB. #8 X 3/4"
18	FR454603	4	SHS. PAN.X.HB. #10 X 3/4"
17	FR454602	4	SHS. PAN.X.HB. #8 X 3/4"
16	FR446031	4	SHS. PAN.X.HB. #8 X 3/4"
15	FR446031	4	SHS. PAN.X.HB. #8 X 3/4"
14	FR221407	4	BOLT, ELEV. 1/4-20 X 1.25"
13	F03066000	2	ANGLE, SCREEN STOP, ROCKER
12	F03061100	2	CAP. RUBBER HOLDING, ROCKER, 60.00"
11	F03060413	2	LINER, SCREENWAY ROCKER, 60.00"
10	F03060001	2	BRACE, BOTTOM, ROCKER, #8
9	F03060400	1	SCREENWAY ROCKER, LH BOTTOM, BOTTOM SHOE, 288D
8	F03060400	1	SCREENWAY ROCKER, RH BOTTOM, BOTTOM SHOE, 288D
7	F03060605	1	GRT. WLDMT. PIPE, ROCKER #8
6	F03060800	2	SCREEN HOOK ASSY, STANDARD
5	F03060600	2	CUP WLDMT. ROCKER, HEAVY DUTY BRUSH
4	F03310008	1	GRAIN STOP ASSY, ROCKER, 2.50" X #8
3	16793300	4	NUT, HEX BEER LOCK, 1/4-20
2	16793600	4	NUT, HEX BEER LOCK, 1/4-20
1	16793600	4	BOLT, CARB. 1/4-20 X 1.25"

CAD		DESCRIPTION	
NO	MANUAL	CHANGES	DESCRIPTION
1		0.16:1	1. dmpjohnson
2		0.16:1	1. dmpjohnson
3		0.16:1	1. dmpjohnson
4		0.16:1	1. dmpjohnson
5		0.16:1	1. dmpjohnson
6		0.16:1	1. dmpjohnson
7		0.16:1	1. dmpjohnson
8		0.16:1	1. dmpjohnson
9		0.16:1	1. dmpjohnson
10		0.16:1	1. dmpjohnson
11		0.16:1	1. dmpjohnson
12		0.16:1	1. dmpjohnson
13		0.16:1	1. dmpjohnson
14		0.16:1	1. dmpjohnson
15		0.16:1	1. dmpjohnson
16		0.16:1	1. dmpjohnson
17		0.16:1	1. dmpjohnson
18		0.16:1	1. dmpjohnson
19		0.16:1	1. dmpjohnson
20		0.16:1	1. dmpjohnson
21		0.16:1	1. dmpjohnson

THIS DRAWING IS THE PROPERTY OF FARMET COMPANY, INC. AND IS NOT TO BE REPRODUCED OR TRANSMITTED IN ANY FORM OR BY ANY MEANS, ELECTRONIC OR MECHANICAL, INCLUDING PHOTOCOPYING, RECORDING, OR BY ANY INFORMATION STORAGE AND RETRIEVAL SYSTEM, WITHOUT THE WRITTEN PERMISSION OF FARMET COMPANY, INC.

NO PART OF THIS DRAWING IS TO BE REPRODUCED OR TRANSMITTED IN ANY FORM OR BY ANY MEANS, ELECTRONIC OR MECHANICAL, INCLUDING PHOTOCOPYING, RECORDING, OR BY ANY INFORMATION STORAGE AND RETRIEVAL SYSTEM, WITHOUT THE WRITTEN PERMISSION OF FARMET COMPANY, INC.

DATE: 10/29/2008  
DRAWN BY: F030001078  
CHECKED BY: cmjohnson  
APPROVED BY: cmjohnson  
PART NUMBER: F030001078  
DWT

NOTES:  
1. NOT SCALE FROM DRAWING.  
2. ONE PIECE REQUIRED PER F03001078: SHOE ASSY, BOTTOM LH/RH W/ROCKERS, 288D.

# Bottom Fan Metal

