

SERVICE MANUAL AND PARTS CATALOG FOR YOUR SUPER 67D



Grain, Seed and Bean Cleaners

Notice: This manual has been recreated from an old manual and/or drawings that were not complete. Every effort has been made to identify the correct parts for this machine but A.T. Ferrell/Clipper takes no responsibility for a part that might not be correct for your machine

1440 SOUTH ADAMS STREET BLUFFTON, INDIANA 46714 (800) 248-8318
www.atferrell.com Updated June 18, 2021

SUPER 67D CLEANER PARTS

SET UP WITH BRUSH SCREEN CLEANING

Top Fan Section

ITEM NO.	PAGE NO.	PART NUMBER	QTY.	DESCRIPTION
All	26	F05016375	1	Air Trunk Assembly Complete (Includes Below)
5	3	F01600700	1	1-11/16" X 57-3/4" Top Fan Shaft
10	3	F92401110	2	1-11/16" Bore Pillow Block Bearing
18	3	F05500600	2	High Static Fan Wheel with 6" Wide Blade, 1-11/16" Bore
215	26	F05502201	1	Right Side Top Fan Housing Assembly (Includes 2 Sides & Metal)
215	26	F05502202	1	Left Side Top Fan Housing Assembly(Includes 2 Sides & Metal)

F01013500 1 Valve Control Assy Complete
PLEASE SEE ATTACHED PICTURE

TOP AIR 5" AUGER DISCHARGE ASSEMBLY

On Newer Machines

ITEM NO.	PAGE NO.	PART NUMBER	QTY.	DESCRIPTION
		F12500061	1	5" Discharge Auger Complete w/Rotary Vane, (Right Hand)
		F12500073	1	5" Discharge Auger Complete w/Rotary Vane, (Left Hand)

PLEASE SEE ATTACHED PRINT

****Refers to the previous listing number. May give parts within that assembly, right side-left side numbers, or numbers for parts that are specific to RH or LH**

TOP AIR DISCHARGE VALVE ASSEMBLY

On Some Older Machines

ITEM NO.	PAGE NO.	PART NUMBER	QTY.	DESCRIPTION
	4	F04500000	1	Discharge Valve Assembly Complete
22	4	F04800010	1	Hinged Gate Weldment
**		F04600510	1	Gate Board
**		F92700004	2	Gate Springs
23	4	F04501401	1	#9 Valve Roll Assemblby with Flanges(25-7/8" Long See Note Below
186	4	F92460200	2	1" Bearing Insert
25	4	40000038	4	Flangette Stamping For Above Bearing
20	4	F01618000	1	Top Valve Shaft 1" X 48"
		Not Available	1	Right Hand Top Air Discharge Spout
		Not Available	1	Left Hand Top Air Discharge Spout

Special Note On Some Older Machines a Shorter Roll & Valve Assembly was Used Which Was 24-1/2" Long. Please Measurure Roll Length

BRUSH SCREEN CLEANING SYSTEM

ITEM NO.	PAGE NO.	PART NUMBER	QTY.	DESCRIPTION
38	7	F01004901	3	Brush Adjusters - Idler Side (Left Hand Side)
**	7	F01004902	3	Brush Adjusters - Idler Side (Right Hand Side)
43	7	F01106300	3	Idler Arm Support
43A	7	F82080060	3	Bolt for Brush Adjusters (Both Sides)
39		Not Available		Brush Adjusters - Control Side (Left Hand Side)
**	7	F01003002	3	Brush Adjusters - Control Side (Right Hand Side)
42	7	F01105400	3	Adjustments Handle with Spring, About 12" Long
42A	7	F82080060	3	Bolt for Brush Adjusters (Both Sides)
		F01104300	6	One Hole Plate with 1-5/8" Bore
		F01000200	12	Rope Sheave Assembly Complete (Includes Below) PLEASE SEE ATTACHED PICTURE
		F09500600	2	Brush Carrier Assembly 15" x 27" with Rollers (Brushes not included) PLEASE SEE ATTACHED PICTURE 10
		F09500400	1	Brush Carrier Assembly 15" x 12" with Rollers (Brushes not included) PLEASE SEE ATTACHED PICTURE 10A

BOTTOM FAN ASSEMBLY

With 1-1/2" Shaft

ITEM NO.	PAGE NO.	PART NUMBER	QTY.	DESCRIPTION
		F01632400	1	Fan Shaft 1-1/2" X 59" (Includes Keys) PLEASE SEE ATTACHED PICTURE 11
		F06002682	1	Bottom Fan Assembly Complete PLEASE SEE ATTACHED PICTURE 12
		F06302010	1	Bottom Drum Iron
		F06302110	1	Discharge Chute 4"
		F06303700	1	Breast Iron

BOTTOM FAN ASSEMBLY

With 1-3/16" Shaft

ITEM NO.	PAGE NO.	PART NUMBER	QTY.	DESCRIPTION
		F01608000	1	Fan Shaft 1-3/16" X 59" (Includes Keys) PLEASE SEE ATTACHED PICTURE 11 WITH 1.18 INCH
		F06002677		Bottom Fan Assembly Complete PLEASE SEE ATTACHED PICTURE 12 WITH 1.18 INCH
201	25	F06302010	1	Bottom Drum Iron
203	25	F06302110	1	Discharge Chute 4"
204	25	F06303700	1	Breast Iron

ECCENTRIC SHAFT ASSEMBLY

ITEM NO.	PAGE NO.	PART NUMBER	QTY.	DESCRIPTION
		F01603800	1	Eccentric Shaft 1-1/2" X 58-1/2" (Includes Keys) PLEASE SEE ATTACHED PICTURES 15 & 16
		F92053126	2	6714 Flange Bearing Conversion Kit (Older Machines)
		F92400022	1	1-1/2" Bearing Insert Only for Above
		F92441083	1	7475 Halfmoon Bearing w/Threaded Housing (Newer Machine)
		F01104600	2	Counterweight Ends 1-1/2" Bore
		F19805200	1	Counterweight 19-13/16"
		F19503600	2	1-1/2" Throw Eccentric Assembly Complete PLEASE SEE ATTACHED 15B PICTURE

MAIN SHOE ASSEMBLY

ITEM NO.	PAGE NO.	PART NUMBER	QTY.	DESCRIPTION
		F03004703	1	Shoe Complete with Rockers (Right Hand Discharge)
		F08306301	1	Sand Spout (Right Hand Discharge)
		F08306601	1	Straw Spout (Right Hand Discharge)
		F03004702	1	Shoe Complete with Rockers (Left Hand Discharge) PLEASE SEE ATTACHED PRINT
		F03501501	2	Rocker Assembly Complete, Both PLEASE SEE ATTACHED PRINT
		F08306302	1	Sand Spout (Left Hand Discharge)
		F08306602	1	Straw Spout (Left Hand Discharge)

SCALPER SHOE ASSEMBLY

ITEM NO.	PAGE NO.	PART NUMBER	QTY.	DESCRIPTION
		F03003400	1	Scalper Shoe Assembly Complete PLEASE SEE ATTACHED PRINT

**Note: Front of the Machine is Where the Screens are Inserted Into the Machine.
Discharge Spouts are Determined by Standing at the Front and Facing the Machine.
Right Hand Discharge Spouts Would Discharge Towards Your Right Hand.**

MISCELLANEOUS PARTS

ITEM NO.	PAGE NO.	PART NUMBER	QTY.	DESCRIPTION
		F90006613	1	Screen Puller Weldment 52"
		F99700034	1	Wrench 1-1/4" Jam Nut
		F08501500	1	Catchall Spout Weldment
		F08604901	1	Catchall Board for above 51-1/4" x 4"
		F04303122	1	Adjusting handle & Crank (18" long for Air adjusting)
			2	Belt Idler Assembly Complete 5-1/2"(Includes Below) PLEASE SEE ATTACHED PICTURE

PULLEYS & BELTS

ITEM NO.	PAGE NO.	PART NUMBER	QTY.	DESCRIPTION
		F91162120	1	B-120 Drive (From Eccentric Shaft to Hopper Drive)
		F91922124	1	2B12.4 SK Eccentric shaft Sheave (Is Driven By Top Fan Shaft)
		44010918	1	SK Bushing for above
		F91162144	2	B-144 Belt (From Eccentric shaft to Top Fan)
		43120115	1	2B5.4 SD Top Fan Shaft Pulley (Drives Eccentric shaft)
		44010521	1	Bushing SDS 1-11/16" for above
		F91912154	1	1B15.4 SK Top Auger Discharge Sheave (Is Driven by Eccentric Sha
		44010913	1	SK Bushing for Valve Shaft Sheave
		F91162112	1	B-112 Belt (From Eccentric Shaft to Top Air Discharge)

**The Following Are the Ball Tray Kit Parts That were
Installed on the Super 67D Cleaners in the Past**

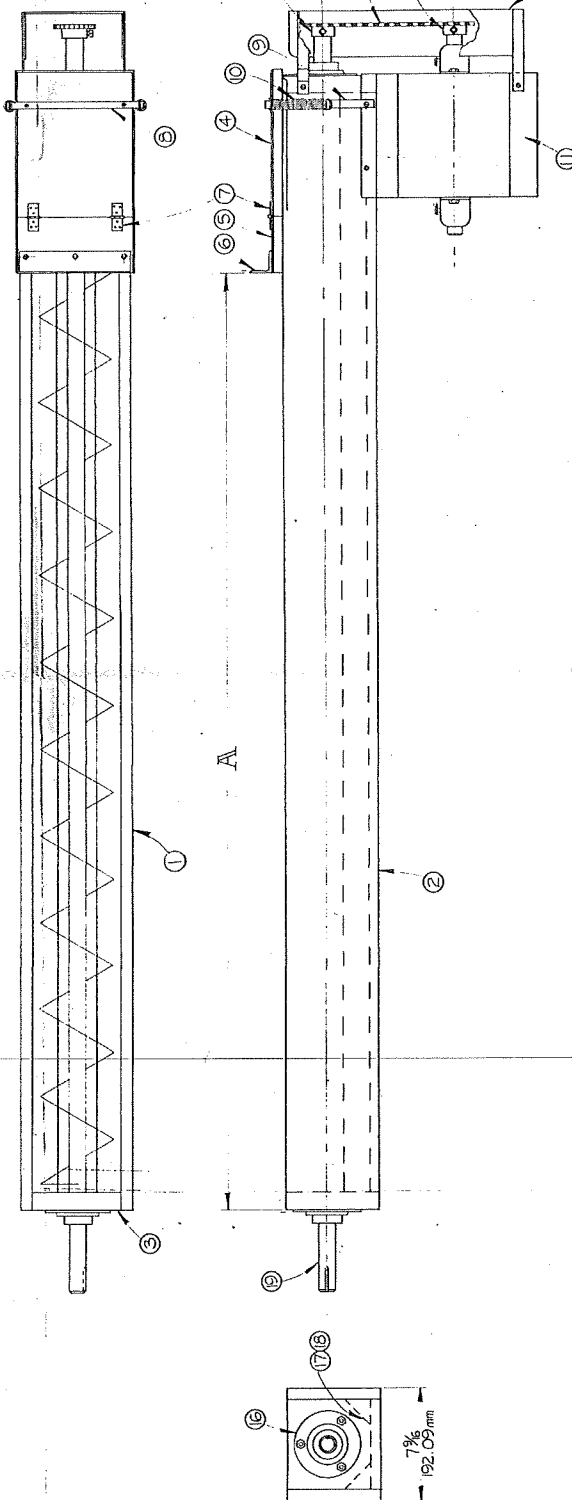
Old Style Ball Trays with 1" Square Turkey Wire That Came Out
With the Screens. Ball Trays were not attached to the Screens.

F90005067	2	Ball Tray Weldment for 1 Piece Screens (New Formed Metal Style)
F90005065	1	Ball Tray Weldment for Scalper Screen (New Formed Metal Style)
F80026102	180	White 1-3/8" Balls
F11301707	2	Ball Tray Support Rail 24"
F11301716	4	Ball Tray Support Rail 14"
F11301717	4	Ball Tray Support Rail 22"

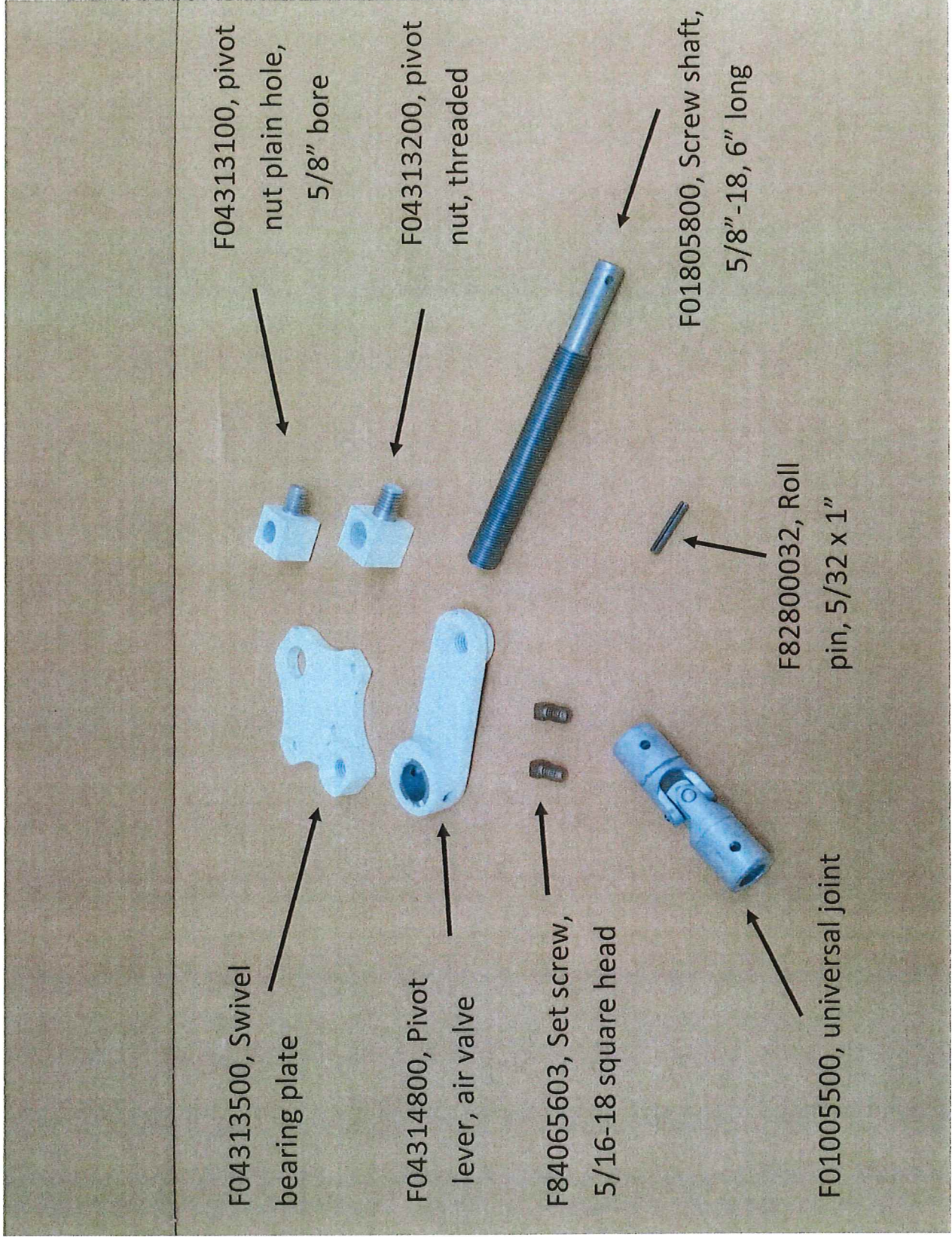
SCALE: 1/4" = 1'-0"

ITEM	ITEM 12	ITEM 17	ITEM 18	ITEM 19	DISCHARGE
125-000-001	125-000-001-A	125-000-001-A	125-000-001-B	125-000-001-C	R.H.
125-000-002	125-000-002-A	125-000-002-A	125-000-002-B	125-000-002-C	R.H.
125-000-003	125-000-003-A	125-000-003-A	125-000-003-B	125-000-003-C	R.H.
125-000-004	125-000-004-A	125-000-004-A	125-000-004-B	125-000-004-C	R.H.
125-000-005	125-000-005-A	125-000-005-A	125-000-005-B	125-000-005-C	R.H.
125-000-006	125-000-006-A	125-000-006-A	125-000-006-B	125-000-006-C	R.H.
125-000-007	125-000-007-A	125-000-007-A	125-000-007-B	125-000-007-C	R.H.
125-000-008	125-000-008-A	125-000-008-A	125-000-008-B	125-000-008-C	R.H.
125-000-009	125-000-009-A	125-000-009-A	125-000-009-B	125-000-009-C	R.H.
125-000-010	125-000-010-A	125-000-010-A	125-000-010-B	125-000-010-C	R.H.
125-000-011	125-000-011-A	125-000-011-A	125-000-011-B	125-000-011-C	R.H.
125-000-012	125-000-012-A	125-000-012-A	125-000-012-B	125-000-012-C	R.H.
125-000-013	125-000-013-A	125-000-013-A	125-000-013-B	125-000-013-C	R.H.
125-000-014	125-000-014-A	125-000-014-A	125-000-014-B	125-000-014-C	R.H.
125-000-015	125-000-015-A	125-000-015-A	125-000-015-B	125-000-015-C	R.H.
125-000-016	125-000-016-A	125-000-016-A	125-000-016-B	125-000-016-C	R.H.
125-000-017	125-000-017-A	125-000-017-A	125-000-017-B	125-000-017-C	R.H.
125-000-018	125-000-018-A	125-000-018-A	125-000-018-B	125-000-018-C	R.H.
125-000-019	125-000-019-A	125-000-019-A	125-000-019-B	125-000-019-C	R.H.
125-000-020	125-000-020-A	125-000-020-A	125-000-020-B	125-000-020-C	R.H.
125-000-021	125-000-021-A	125-000-021-A	125-000-021-B	125-000-021-C	R.H.
125-000-022	125-000-022-A	125-000-022-A	125-000-022-B	125-000-022-C	R.H.
125-000-023	125-000-023-A	125-000-023-A	125-000-023-B	125-000-023-C	R.H.
125-000-024	125-000-024-A	125-000-024-A	125-000-024-B	125-000-024-C	R.H.
125-000-025	125-000-025-A	125-000-025-A	125-000-025-B	125-000-025-C	R.H.
125-000-026	125-000-026-A	125-000-026-A	125-000-026-B	125-000-026-C	R.H.
125-000-027	125-000-027-A	125-000-027-A	125-000-027-B	125-000-027-C	R.H.
125-000-028	125-000-028-A	125-000-028-A	125-000-028-B	125-000-028-C	R.H.
125-000-029	125-000-029-A	125-000-029-A	125-000-029-B	125-000-029-C	R.H.
125-000-030	125-000-030-A	125-000-030-A	125-000-030-B	125-000-030-C	R.H.
125-000-031	125-000-031-A	125-000-031-A	125-000-031-B	125-000-031-C	R.H.
125-000-032	125-000-032-A	125-000-032-A	125-000-032-B	125-000-032-C	R.H.
125-000-033	125-000-033-A	125-000-033-A	125-000-033-B	125-000-033-C	R.H.
125-000-034	125-000-034-A	125-000-034-A	125-000-034-B	125-000-034-C	R.H.
125-000-035	125-000-035-A	125-000-035-A	125-000-035-B	125-000-035-C	R.H.
125-000-036	125-000-036-A	125-000-036-A	125-000-036-B	125-000-036-C	R.H.
125-000-037	125-000-037-A	125-000-037-A	125-000-037-B	125-000-037-C	R.H.
125-000-038	125-000-038-A	125-000-038-A	125-000-038-B	125-000-038-C	R.H.
125-000-039	125-000-039-A	125-000-039-A	125-000-039-B	125-000-039-C	R.H.
125-000-040	125-000-040-A	125-000-040-A	125-000-040-B	125-000-040-C	R.H.
125-000-041	125-000-041-A	125-000-041-A	125-000-041-B	125-000-041-C	R.H.
125-000-042	125-000-042-A	125-000-042-A	125-000-042-B	125-000-042-C	R.H.
125-000-043	125-000-043-A	125-000-043-A	125-000-043-B	125-000-043-C	R.H.
125-000-044	125-000-044-A	125-000-044-A	125-000-044-B	125-000-044-C	R.H.
125-000-045	125-000-045-A	125-000-045-A	125-000-045-B	125-000-045-C	R.H.
125-000-046	125-000-046-A	125-000-046-A	125-000-046-B	125-000-046-C	R.H.
125-000-047	125-000-047-A	125-000-047-A	125-000-047-B	125-000-047-C	R.H.
125-000-048	125-000-048-A	125-000-048-A	125-000-048-B	125-000-048-C	R.H.
125-000-049	125-000-049-A	125-000-049-A	125-000-049-B	125-000-049-C	R.H.
125-000-050	125-000-050-A	125-000-050-A	125-000-050-B	125-000-050-C	R.H.
125-000-051	125-000-051-A	125-000-051-A	125-000-051-B	125-000-051-C	R.H.
125-000-052	125-000-052-A	125-000-052-A	125-000-052-B	125-000-052-C	R.H.
125-000-053	125-000-053-A	125-000-053-A	125-000-053-B	125-000-053-C	R.H.
125-000-054	125-000-054-A	125-000-054-A	125-000-054-B	125-000-054-C	R.H.
125-000-055	125-000-055-A	125-000-055-A	125-000-055-B	125-000-055-C	R.H.
125-000-056	125-000-056-A	125-000-056-A	125-000-056-B	125-000-056-C	R.H.
125-000-057	125-000-057-A	125-000-057-A	125-000-057-B	125-000-057-C	R.H.
125-000-058	125-000-058-A	125-000-058-A	125-000-058-B	125-000-058-C	R.H.
125-000-059	125-000-059-A	125-000-059-A	125-000-059-B	125-000-059-C	R.H.
125-000-060	125-000-060-A	125-000-060-A	125-000-060-B	125-000-060-C	R.H.
125-000-061	125-000-061-A	125-000-061-A	125-000-061-B	125-000-061-C	R.H.
125-000-062	125-000-062-A	125-000-062-A	125-000-062-B	125-000-062-C	R.H.
125-000-063	125-000-063-A	125-000-063-A	125-000-063-B	125-000-063-C	R.H.
125-000-064	125-000-064-A	125-000-064-A	125-000-064-B	125-000-064-C	R.H.
125-000-065	125-000-065-A	125-000-065-A	125-000-065-B	125-000-065-C	R.H.
125-000-066	125-000-066-A	125-000-066-A	125-000-066-B	125-000-066-C	R.H.
125-000-067	125-000-067-A	125-000-067-A	125-000-067-B	125-000-067-C	R.H.
125-000-068	125-000-068-A	125-000-068-A	125-000-068-B	125-000-068-C	R.H.
125-000-069	125-000-069-A	125-000-069-A	125-000-069-B	125-000-069-C	R.H.
125-000-070	125-000-070-A	125-000-070-A	125-000-070-B	125-000-070-C	R.H.
125-000-071	125-000-071-A	125-000-071-A	125-000-071-B	125-000-071-C	R.H.
125-000-072	125-000-072-A	125-000-072-A	125-000-072-B	125-000-072-C	R.H.
125-000-073	125-000-073-A	125-000-073-A	125-000-073-B	125-000-073-C	R.H.
125-000-074	125-000-074-A	125-000-074-A	125-000-074-B	125-000-074-C	R.H.
125-000-075	125-000-075-A	125-000-075-A	125-000-075-B	125-000-075-C	R.H.

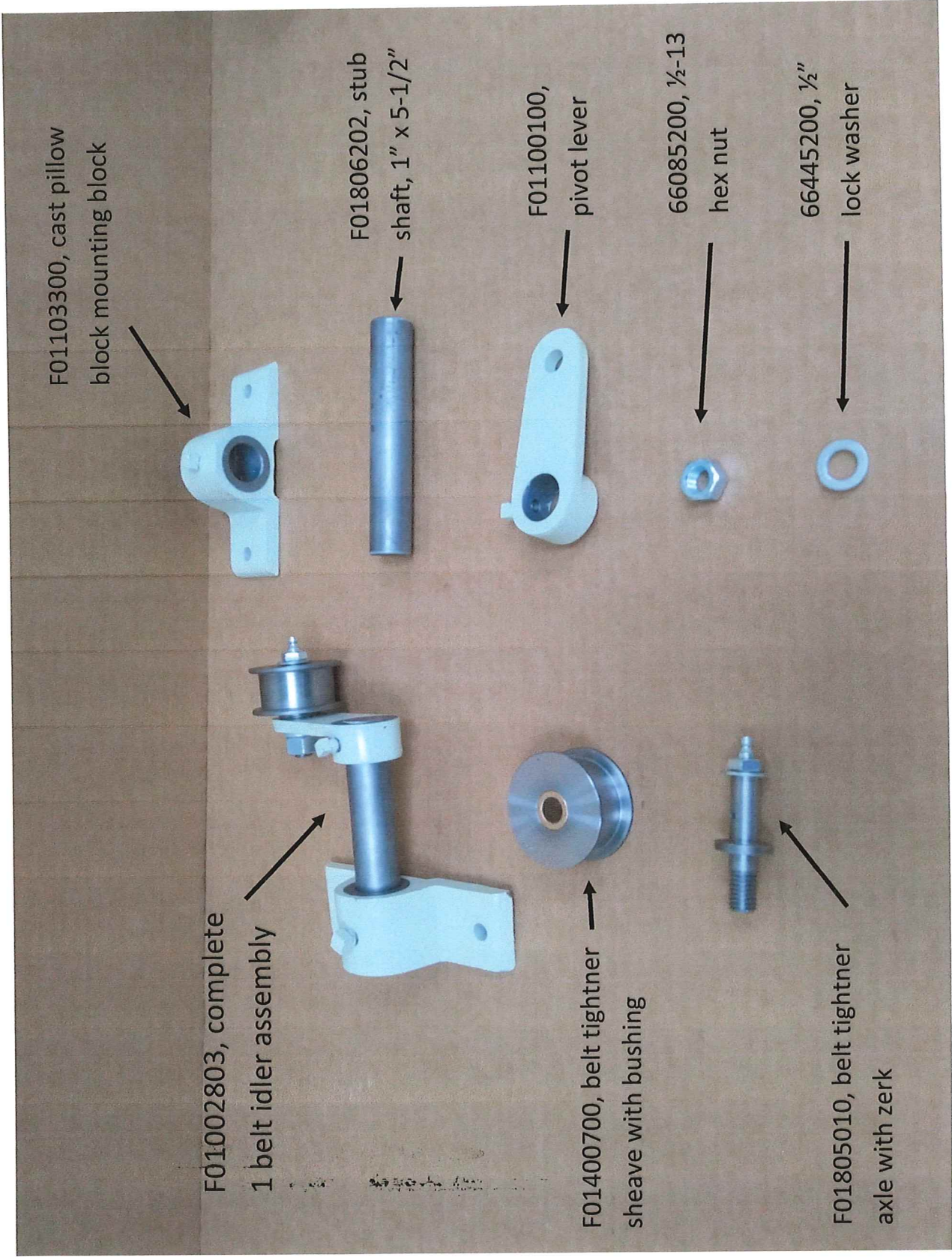
ITEM	PART N°	QTY	DESCRIPTION
1	SEE CHART	2	SIDES
2	SEE CHART	1	BOTTOM
3	126-002-A	2	ENDS
4	125-001-A	1	DOOR ASSEMBLY
5	126-003-A	1	SUPPORT ANGLE
6	128-003-A	2	TOP BRACKET
7	128-003-A	2	BOTTOM BRACKET
8	128-003-A	2	SPRING
9	128-003-A	2	ROTARY VANE ASSY
10	128-003-A	2	ROTARY VANE GUARD
11	128-003-A	2	16 TOOTH SPROCKET
12	128-003-A	2	1/4 CHAIN
13	128-003-A	2	1 3/4 FLANGETTE BRNG.
14	128-003-A	2	1/2 LINER
15	128-003-A	2	SEE CHART
16	128-003-A	2	SEE CHART
17	128-003-A	2	SEE CHART
18	128-003-A	2	SEE CHART
19	128-003-A	2	SEE CHART
20	128-003-A	2	SEE CHART
21	128-003-A	2	SEE CHART
22	128-003-A	2	SEE CHART
23	128-003-A	2	SEE CHART
24	128-003-A	2	SEE CHART
25	128-003-A	2	SEE CHART
26	128-003-A	2	SEE CHART
27	128-003-A	2	SEE CHART
28	128-003-A	2	SEE CHART
29	128-003-A	2	SEE CHART
30	128-003-A	2	SEE CHART
31	128-003-A	2	SEE CHART
32	128-003-A	2	SEE CHART
33	128-003-A	2	SEE CHART
34	128-003-A	2	SEE CHART
35	128-003-A	2	SEE CHART
36	128-003-A	2	SEE CHART
37	128-003-A	2	SEE CHART
38	128-003-A	2	SEE CHART
39	128-003-A	2	SEE CHART
40	128-003-A	2	SEE CHART
41	128-003-A	2	SEE CHART
42	128-003-A	2	SEE CHART
43	128-003-A	2	SEE CHART
44	128-003-A	2	SEE CHART
45	128-003-A	2	SEE CHART
46	128-003-A	2	SEE CHART
47	128-003-A	2	SEE CHART
48	128-003-A	2	SEE CHART
49	128-003-A	2	SEE CHART
50	128-003-A	2	SEE CHART
51	128-003-A	2	SEE CHART
52	128-003-A	2	SEE CHART
53	128-003-A	2	SEE CHART
54	128-003-A	2	SEE CHART
55	128-003-A	2	SEE CHART
56	128-003-A	2	SEE CHART
57	128-003-A	2	SEE CHART
58	128-003-A	2	SEE CHART
59	128-003-A	2	SEE CHART
60	128-003-A	2	SEE CHART
61	128-003-A	2	SEE CHART
62	128-003-A	2	SEE CHART
63	128-003-A	2	SEE CHART
64	128-003-A	2	SEE CHART
65	128-003-A	2	SEE CHART
66	128-003-A	2	SEE CHART
67	128-003-A	2	SEE CHART
68	128-003-A	2	SEE CHART
69	128-003-A	2	SEE CHART
70	128-003-A	2	SEE CHART
71	128-003-A	2	SEE CHART
72	128-003-A	2	SEE CHART
73	128-003-A	2	SEE CHART
74	128-003-A	2	SEE CHART
75	128-003-A	2	SEE CHART
76	128-003-A	2	SEE CHART
77	128-003-A	2	SEE CHART
78	128-003-A	2	SEE CHART
79	128-003-A	2	SEE CHART
80	128-003-A	2	SEE CHART
81	128-003-A	2	SEE CHART
82	128-003-A	2	SEE CHART
83	128-003-A	2	SEE CHART
84	128-003-A	2	SEE CHART
85	128-003-A	2	SEE CHART
86	128-003-A	2	SEE CHART
87	128-003-A	2	SEE CHART
88	128-003-A	2	SEE CHART
89	128-003-A	2	SEE CHART
90	128-003-A	2	SEE CHART
91	128-003-A	2	SEE CHART
92	128-003-A	2	SEE CHART
93	128-003-A	2	SEE CHART
94	128-003-A	2	SEE CHART
95	128-003-A	2	SEE CHART
96	128-003-A	2	SEE CHART
97	128-003-A	2	SEE CHART
98	128-003-A	2	SEE CHART
99	128-003-A	2	SEE CHART
100	128-003-A	2	SEE CHART



FOR FLOPPER VALVE SEE 125-037-C
 JUN 2 6 1981
 FERRELL - RDS
 DRAWING NO. 125-000-C
 DATE 10-2-80
 DRAWN BY
 CHECKED BY
 APPROVED BY



F01013500, Gate valve adjusting assembly, ALL



F01103300, cast pillow
block mounting block



F01806202, stub
shaft, 1" x 5-1/2"



F01100100,
pivot lever



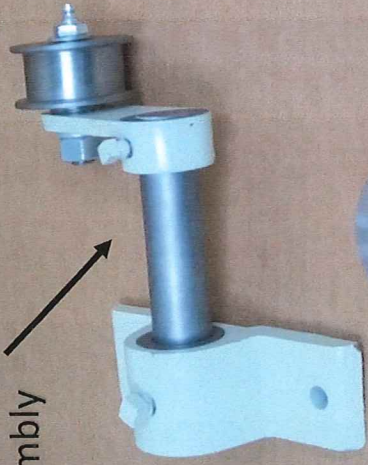
66085200, 1/2-13
hex nut



66445200, 1/2"
lock washer



F01002803, complete
1 belt idler assembly



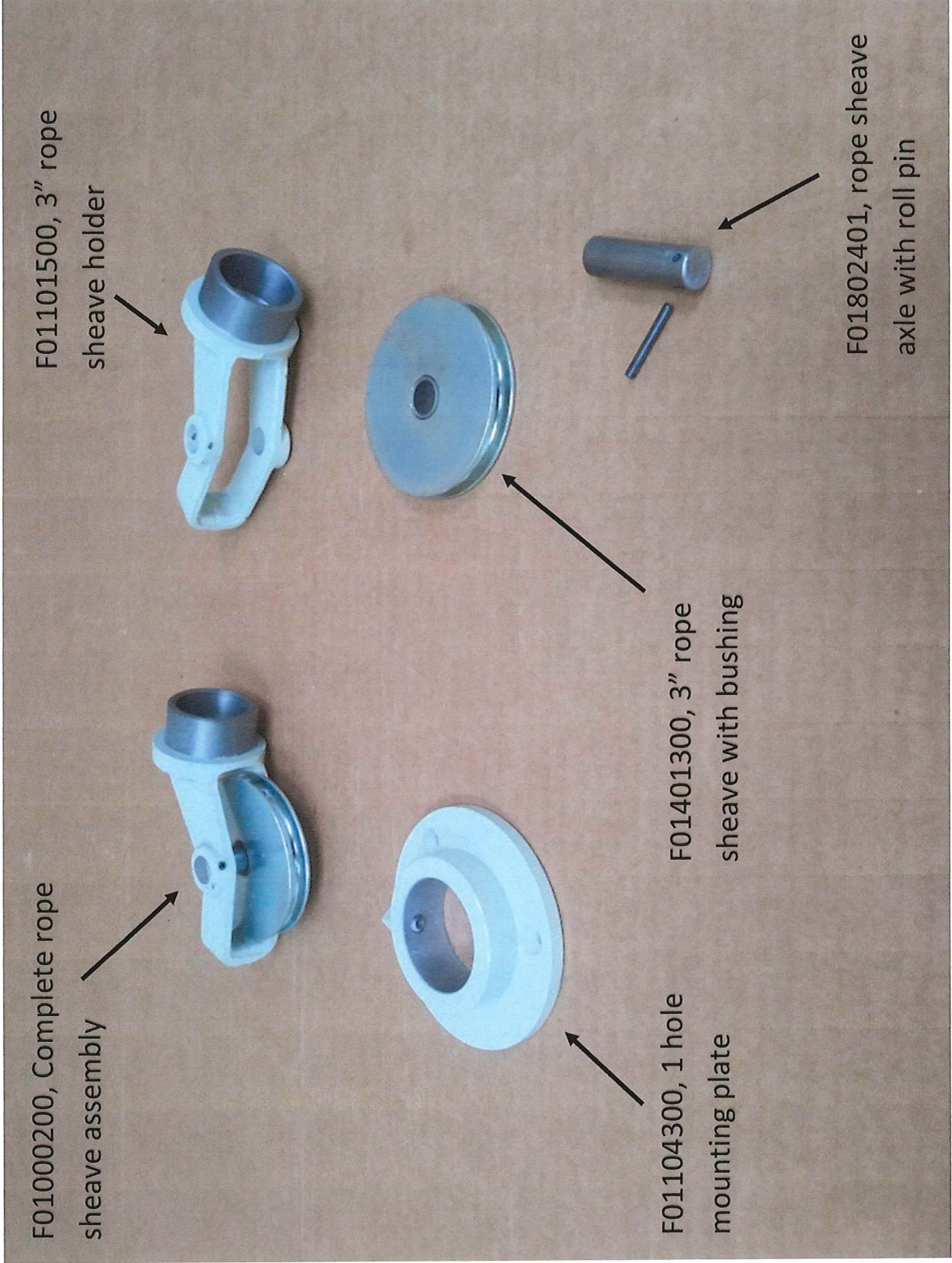
F01400700, belt tightener
sheave with bushing



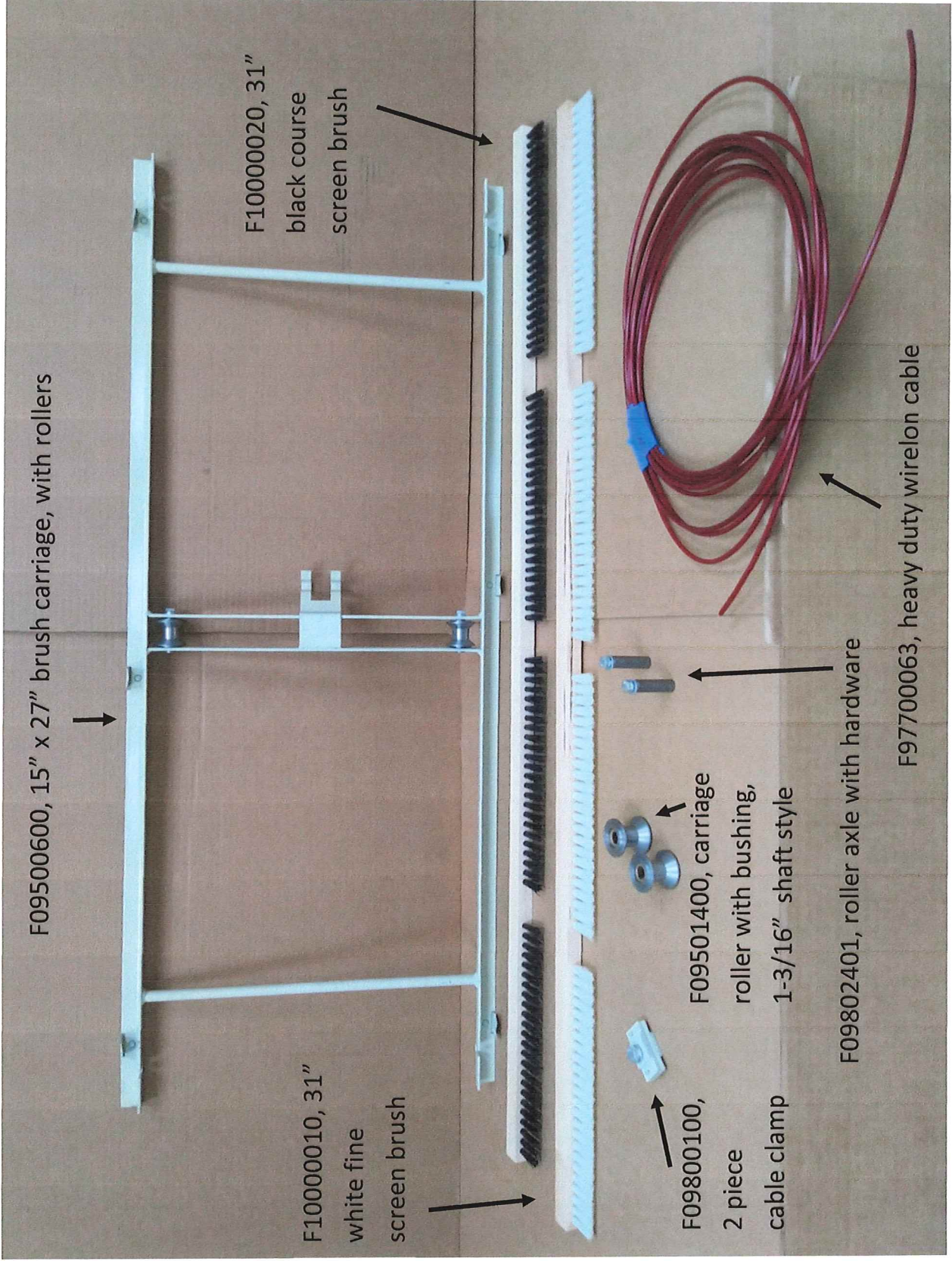
F01805010, belt tightener
axle with zerck



Belt tightener assembly



3" Rope sheave assembly



F09500600, 15" x 27" brush carriage, with rollers

F10000020, 31" black course screen brush

F10000010, 31" white fine screen brush

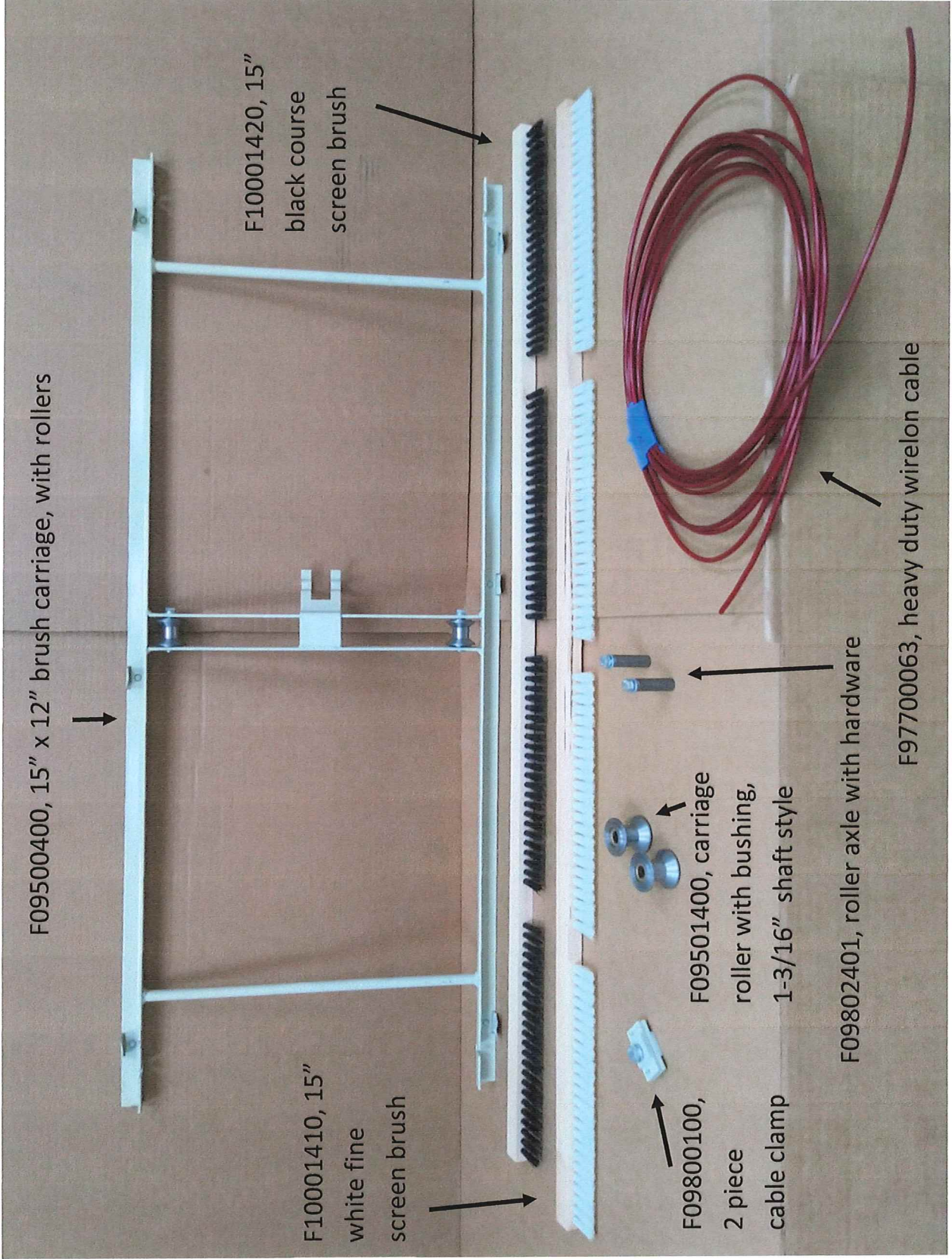
F09501400, carriage roller with bushing, 1-3/16" shaft style

F09800100, 2 piece cable clamp

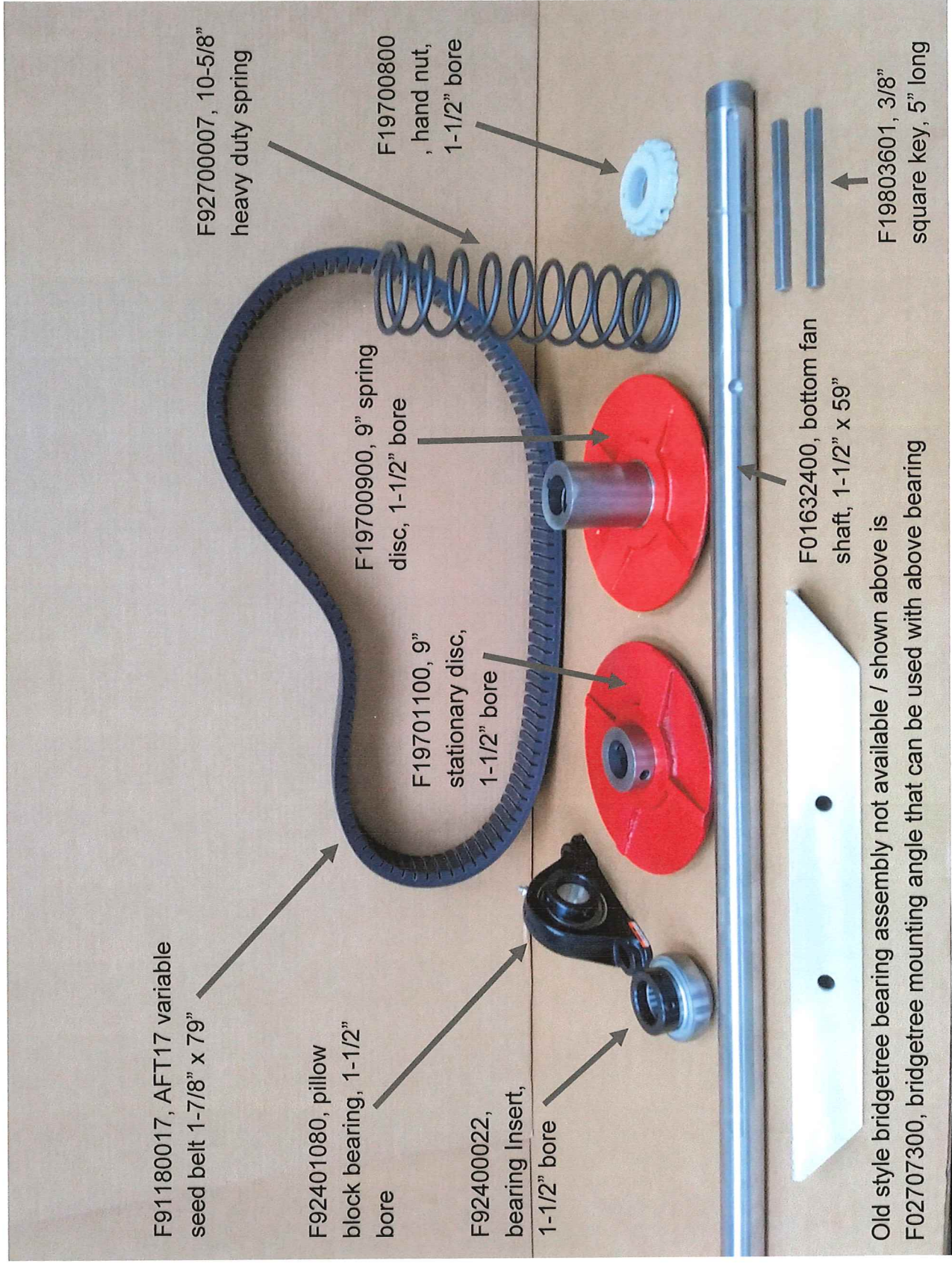
F09802401, roller axle with hardware

F97700063, heavy duty wirelon cable

Brush carriage, with accessories, page 10



Brush carriage, with accessories, page 10A



F91180017, AFT17 variable seed belt 1-7/8" x 79"

F92700007, 10-5/8" heavy duty spring

F92401080, pillow block bearing, 1-1/2" bore

F19700900, 9" spring disc, 1-1/2" bore

F19700800, hand nut, 1-1/2" bore

F19701100, 9" stationary disc, 1-1/2" bore

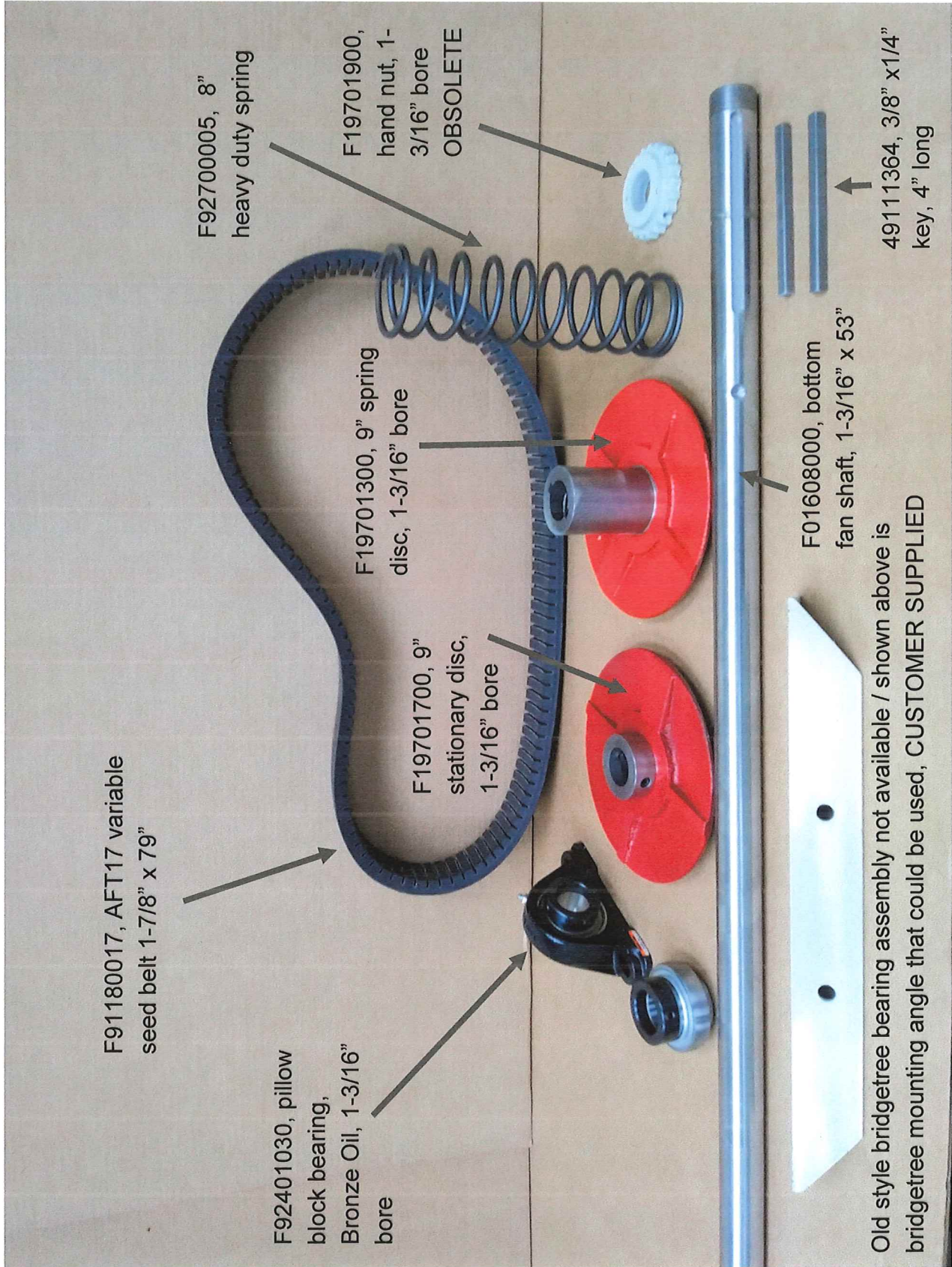
F92400022, bearing insert, 1-1/2" bore

F01632400, bottom fan shaft, 1-1/2" x 59"

F19803601, 3/8" square key, 5" long

Old style bridgetree bearing assembly not available / shown above is F02707300, bridgetree mounting angle that can be used with above bearing

Bottom fan shaft assembly, page 11



F91180017, AFT17 variable
seed belt 1-7/8" x 79"

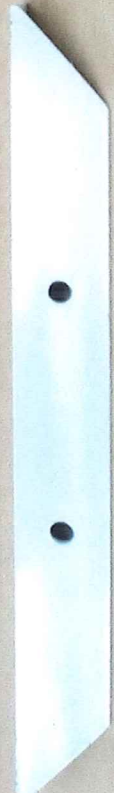
F92401030, pillow
block bearing,
Bronze Oil, 1-3/16"
bore

F19701700, 9"
stationary disc,
1-3/16" bore

F19701300, 9" spring
disc, 1-3/16" bore

F92700005, 8"
heavy duty spring

F19701900,
hand nut, 1-
3/16" bore
OBSOLETE



Old style bridgetree bearing assembly not available / shown above is
bridgetree mounting angle that could be used, CUSTOMER SUPPLIED

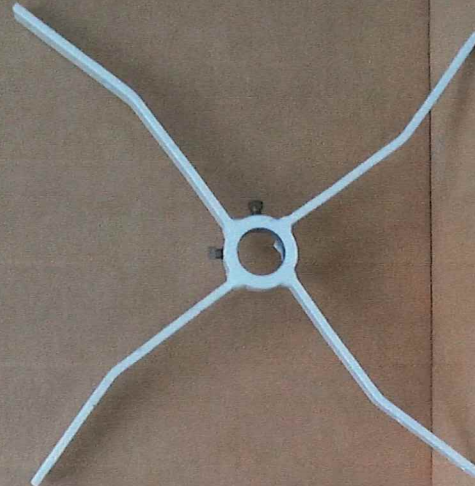
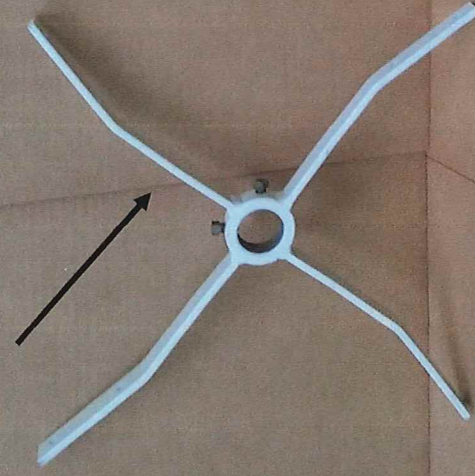
F01608000, bottom
fan shaft, 1-3/16" x 53"

49111364, 3/8" x 1/4"
key, 4" long

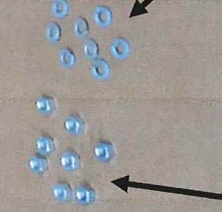
Bottom fan shaft assembly, 1-3/16" shaft, page 11

2 pieces, F06001000, bottom fan spider, 1-1/2" bore

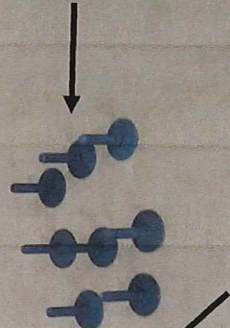
F06002682, complete bottom fan assembly



4 pieces, F01701104, bottom fan blade, 35-5/8" long



16 pieces, 66083300, 1/4-20 hex nut



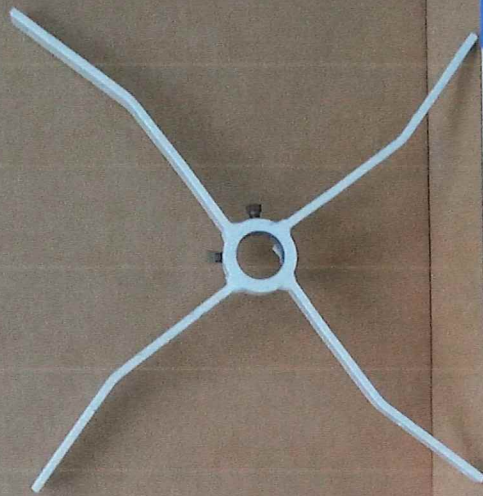
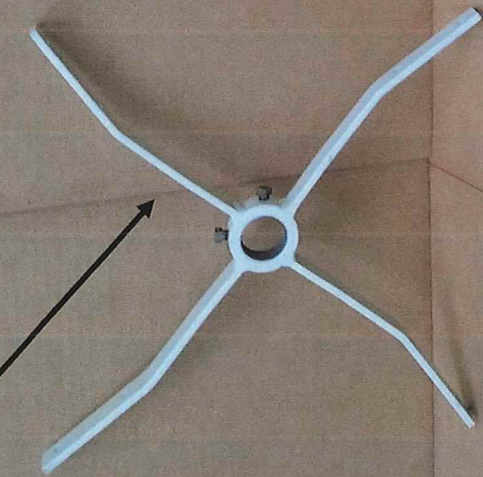
16 pieces, F82021407, elevator bolt, 1/4-20 x 1-1/4"

16 pieces, 66443300, 1/4" lock nut

Bottom fan assembly, 1-1/2" shaft, 7 wide, page 12

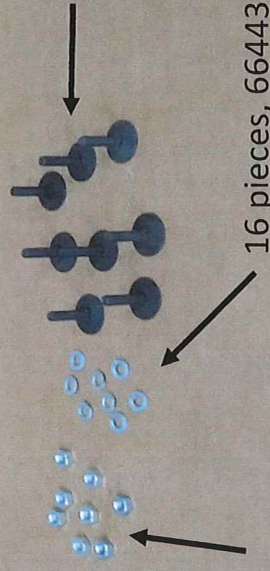
2 pieces, F06001600, bottom fan spider, 1-3/16" bore

F06002677, complete bottom fan assembly



4 pieces, F01701104, bottom fan blade, 35-5/8" long

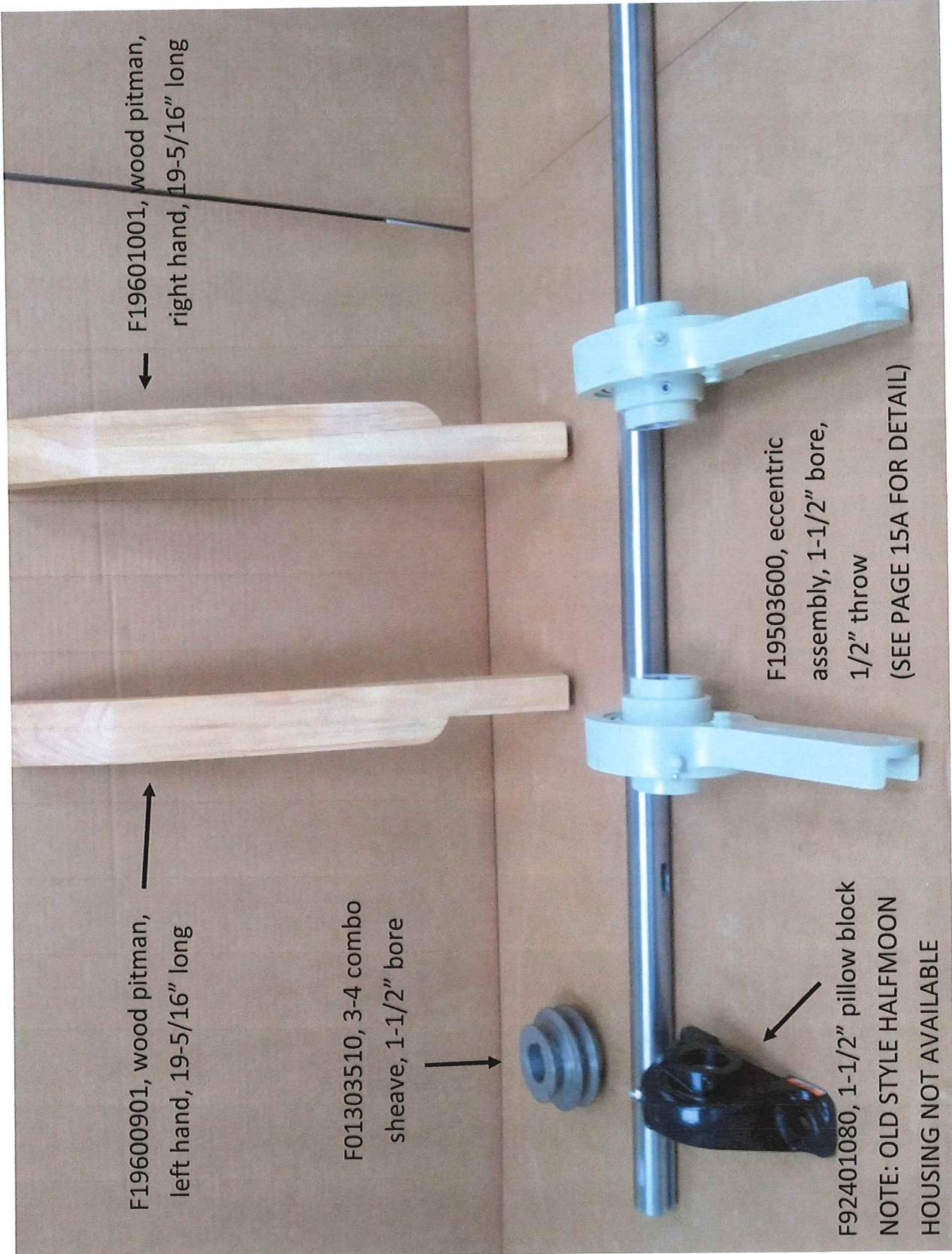
16 pieces, F82021407, elevator bolt, 1/4-20 x 1-1/4"



16 pieces, 66443300, 1/4" lock nut

16 pieces, 66083300, 1/4-20 hex nut

Bottom fan assembly, 1-3/16" shaft, 7 wide, page 12



F19600901, wood pitman,
left hand, 19-5/16" long

F19601001, wood pitman,
right hand, 19-5/16" long

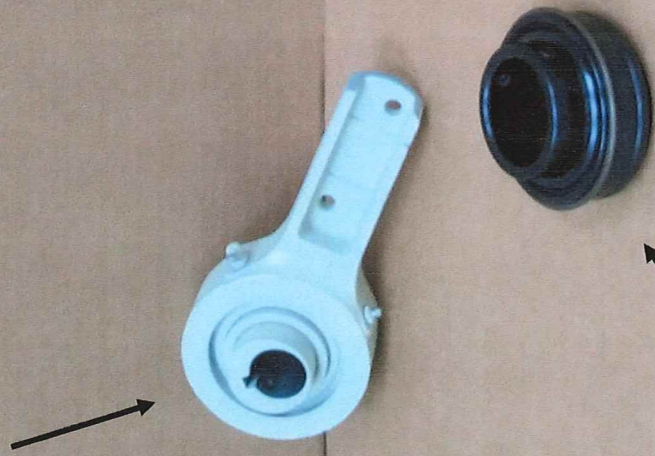
F01303510, 3-4 combo
sheave, 1-1/2" bore

F19503600, eccentric
assembly, 1-1/2" bore,
1/2" throw
(SEE PAGE 15A FOR DETAIL)

F92401080, 1-1/2" pillow block
NOTE: OLD STYLE HALFMOON
HOUSING NOT AVAILABLE

Eccentric shaft, wood pitmans, page 15

F19503600, Complete eccentric assembly, 1-1/2" bore, 1/2" throw

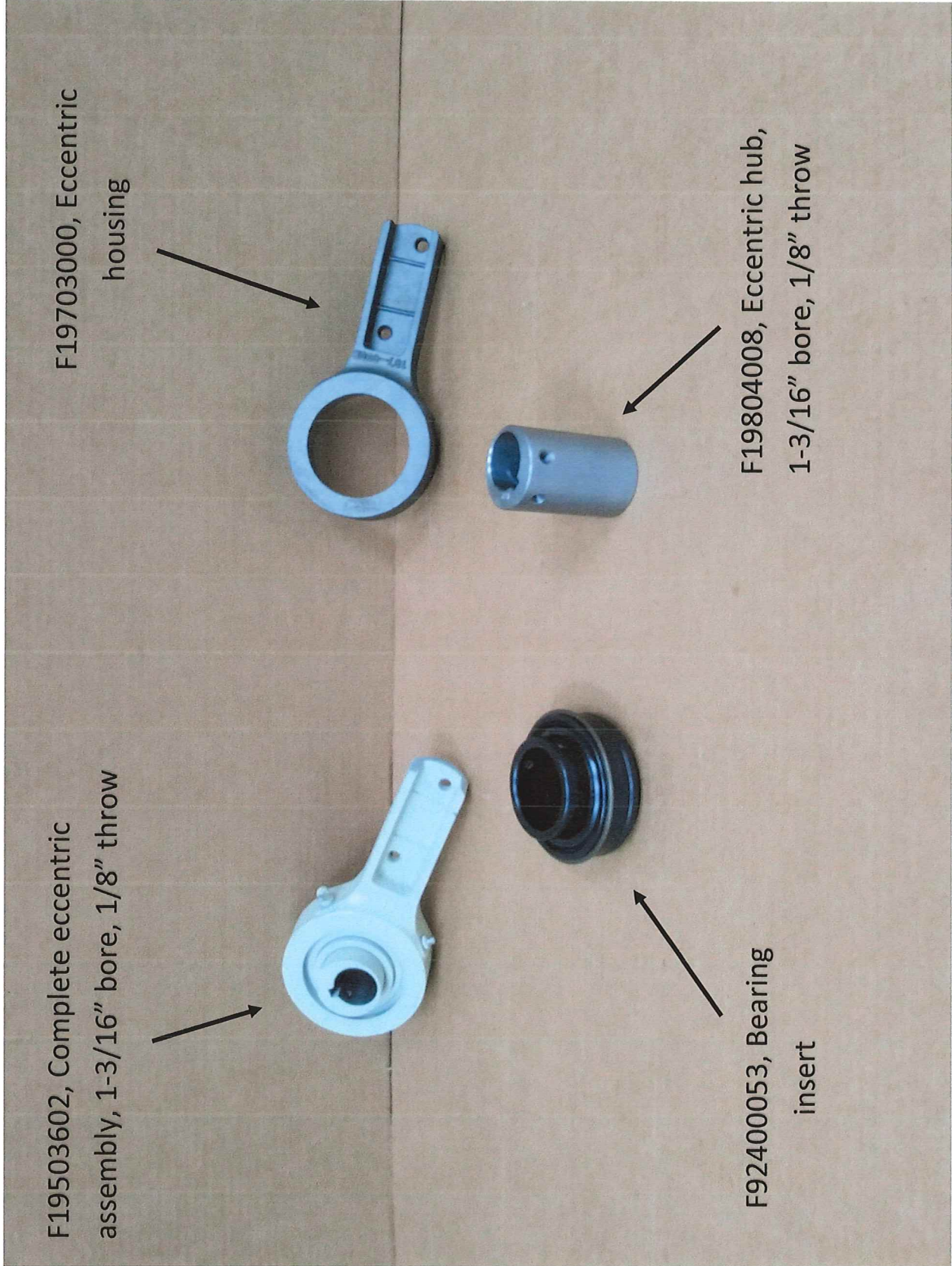


F19703000, Eccentric housing



F19804004, Eccentric hub, 1-1/2" bore, 1/2" throw

F92400053, Bearing insert

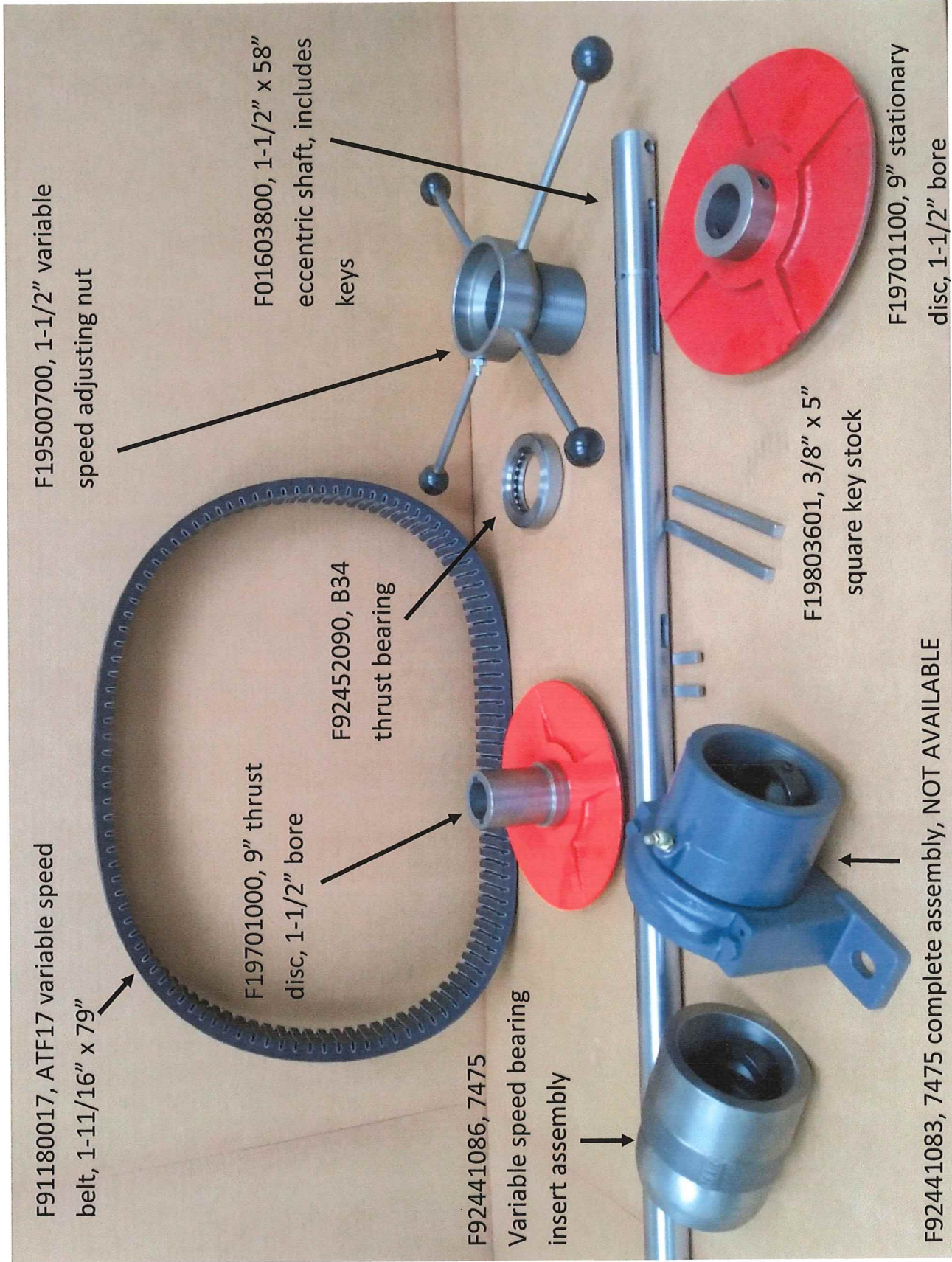


F19503602, Complete eccentric assembly, 1-3/16" bore, 1/8" throw

F19703000, Eccentric housing

F19804008, Eccentric hub, 1-3/16" bore, 1/8" throw

F92400053, Bearing insert



F91180017, ATF17 variable speed belt, 1-11/16" x 79"

F19701000, 9" thrust disc, 1-1/2" bore

F92452090, B34 thrust bearing

F92441086, 7475 Variable speed bearing insert assembly

F19500700, 1-1/2" variable speed adjusting nut

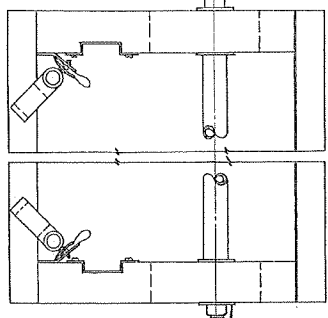
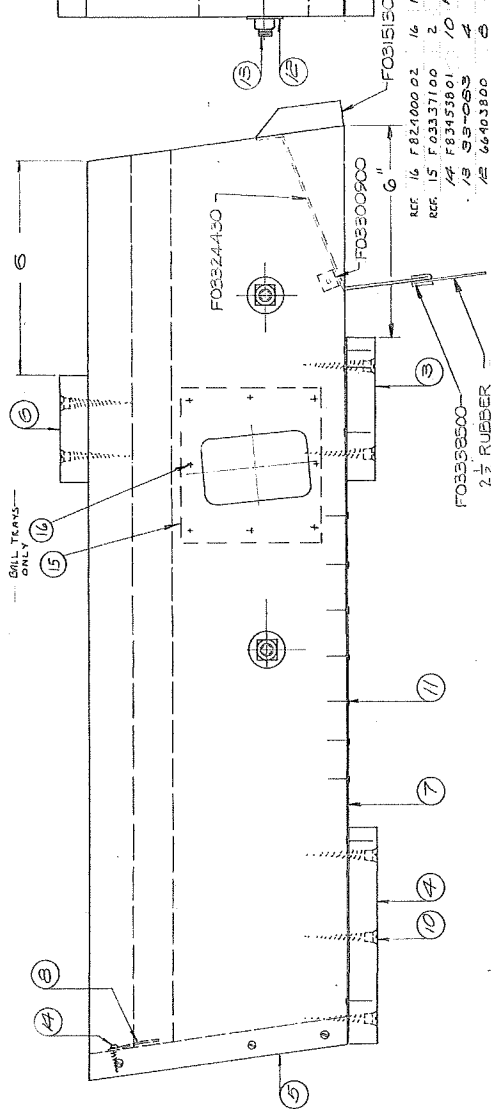
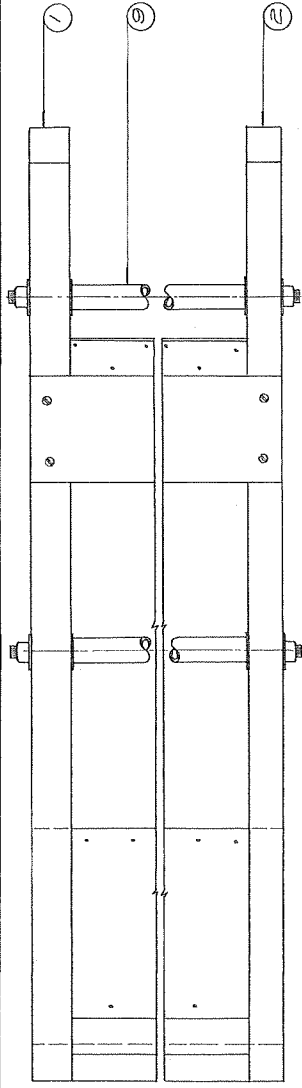
F01603800, 1-1/2" x 58" eccentric shaft, includes keys

F19803601, 3/8" x 5" square key stock

F19701100, 9" stationary disc, 1-1/2" bore

F92441083, 7475 complete assembly, NOT AVAILABLE

Eccentric shaft assembly, Super 47,67 page 16



REF	QTY	PART NO.	DESCRIPTION
16	1/2	F824000	1/2 MIL - 3/4 - 14 GA. CORRUGATED
15	2	F0337100	COVER PLATE
14	2	F8345801	7/8 X 7/8 PH. HD. SH. JCT. STD
13	4	SS-OSS	SS-OSS
12	6	66403800	6 FT. WASH. 1/4 STD 3/4 IN. D.
11	60	F82400002	60 NAIL
10	20	F83440303	20 1/4 X 2 FT. HD. W/SCREWS STD 3/8 STL.
9	2	SS-OSS200	2 BUMPER-BRUSH 3/4 STD 3/4 IN. D.
8	1	SS-OSS100	1 STOP-HEEL 3/4 STD 3/4 IN. D.
7	1	SS-OSS000	1 METAL-BOTTOM 3/4 STD 3/4 IN. D.
6	1	37-OSS700	1 BOARD-TOP 3/4 STD 3/4 IN. D.
5	1	37-OSS600	1 BOARD-END 3/4 STD 3/4 IN. D.
4	1	37-OSS500	1 BOARD-BOTTOM 3/4 STD 3/4 IN. D.
3	1	30-OSS400	1 SIDE SHOE
2	1	30-OSS300	1 SIDE SHOE
1	1	30-OSS200	1 SIDE SHOE

ITEM PART NO. QTY. NAME PART NAME MATL. REMARKS

ASSEMBLY

SCALPER SHOE

DRAWN BY: [] T.D. BY: [] C.D. BY: []

DATE: 7-27-74 SCALE: 3/8"

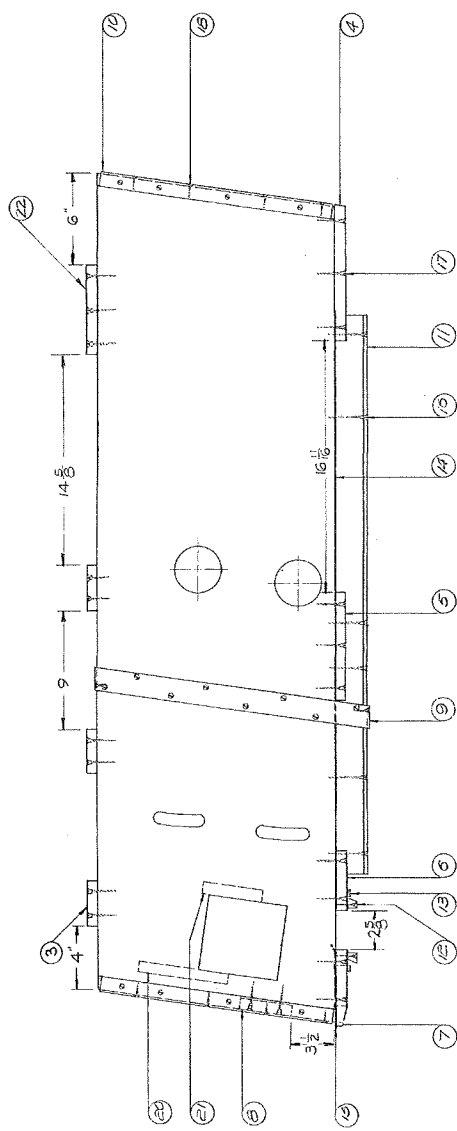
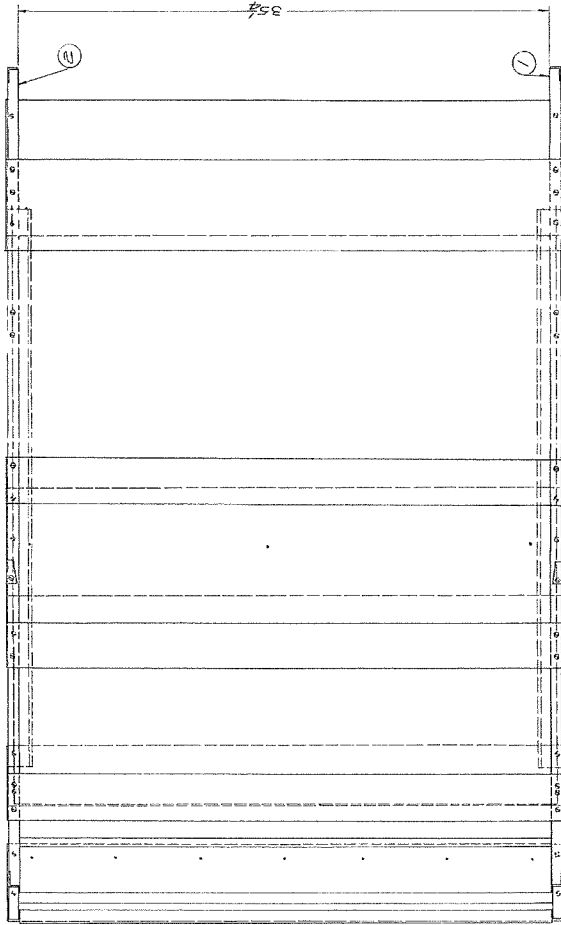
A. T. FERRELL & CO. 174 N. 2ND ST. BAYLON, MICH.

SHEET NO. 4 F03003400

MICROFILMED
DATE SEP 22 1980

NOTE:
 FOR SHOES WITH ROCKERS INCLUDED USE:
 L.H. # 30-0472B
 R.H. # 30-0473B

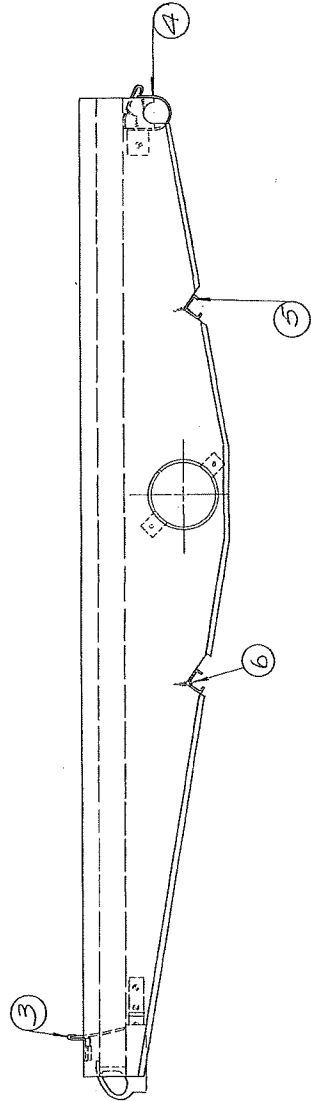
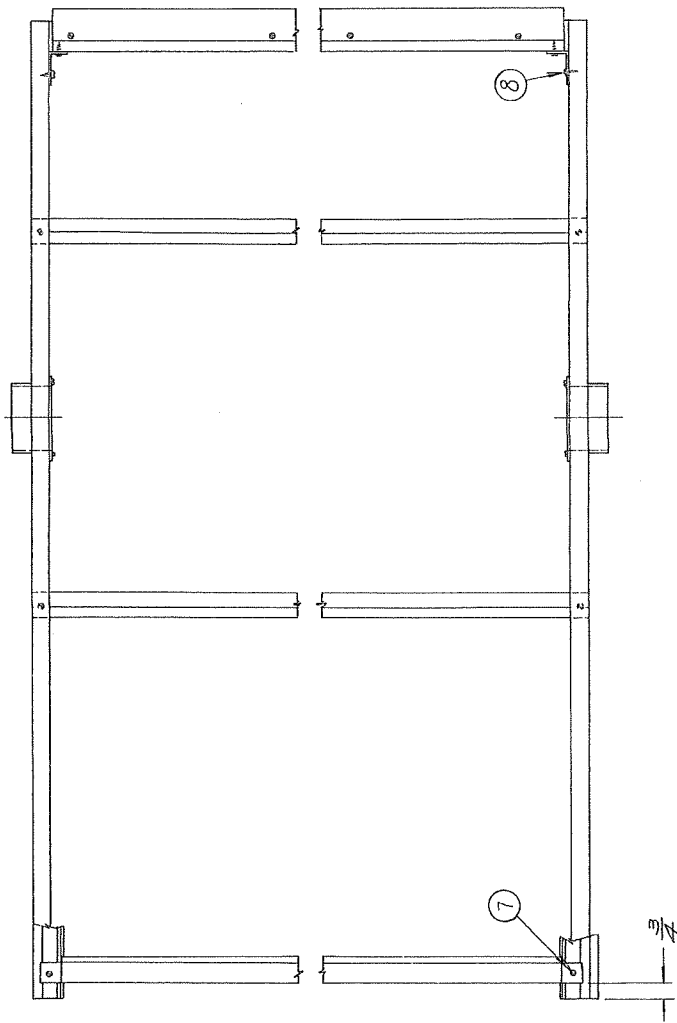
L.H. ASSEMBLY SHOWN #30-0476C
 R.H. ASSEMBLY OPPOSITE #30-0476C



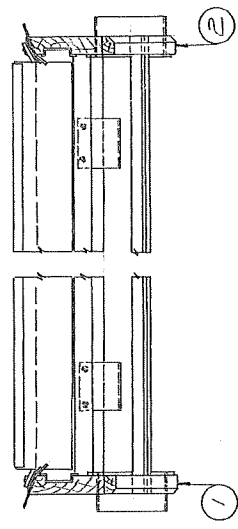
(13) FASTEN WITH BOTTOM TO SHOE
 SIZE WITH 3/4" DIA. NAIL - 60 REQD

ITEM	PART NO	QTY	PART NAME	MTL	REMARKS
22	10317403	1	BOARD 5/8"	WAL	
21	31-101	1	CURT-SPROUT	WAL	
20	31-102	74	MAIL	STL	14 GA
19	F8240001	1	SOREN-HOOD	STL	10-VLT AD
18	F8400018	35	SOREN-HOOD	STL	10-VLT AD
17	F8400019	12	SOREN-HOOD	STL	10-VLT AD
16	F8400020	12	SOREN-HOOD	STL	10-VLT AD
15	31-099	1	TRUCK-SPROUT	WAL	50 GA
14	31-098	2	TRUCK-SPROUT	WAL	50 GA
13	31-097	2	TRUCK-SPROUT	WAL	50 GA
12	31-096	2	TRUCK-SPROUT	WAL	50 GA
11	31-095	2	TRUCK-SPROUT	WAL	50 GA
10	31-094	2	TRUCK-SPROUT	WAL	50 GA
9	31-093	2	TRUCK-SPROUT	WAL	50 GA
8	31-092	2	TRUCK-SPROUT	WAL	50 GA
7	31-091	2	TRUCK-SPROUT	WAL	50 GA
6	31-090	2	TRUCK-SPROUT	WAL	50 GA
5	31-089	2	TRUCK-SPROUT	WAL	50 GA
4	31-088	2	TRUCK-SPROUT	WAL	50 GA
3	31-087	2	TRUCK-SPROUT	WAL	50 GA
2	31-086	2	TRUCK-SPROUT	WAL	50 GA
1	31-085	2	TRUCK-SPROUT	WAL	50 GA

MICROFILMED
 DATE 10/15/88



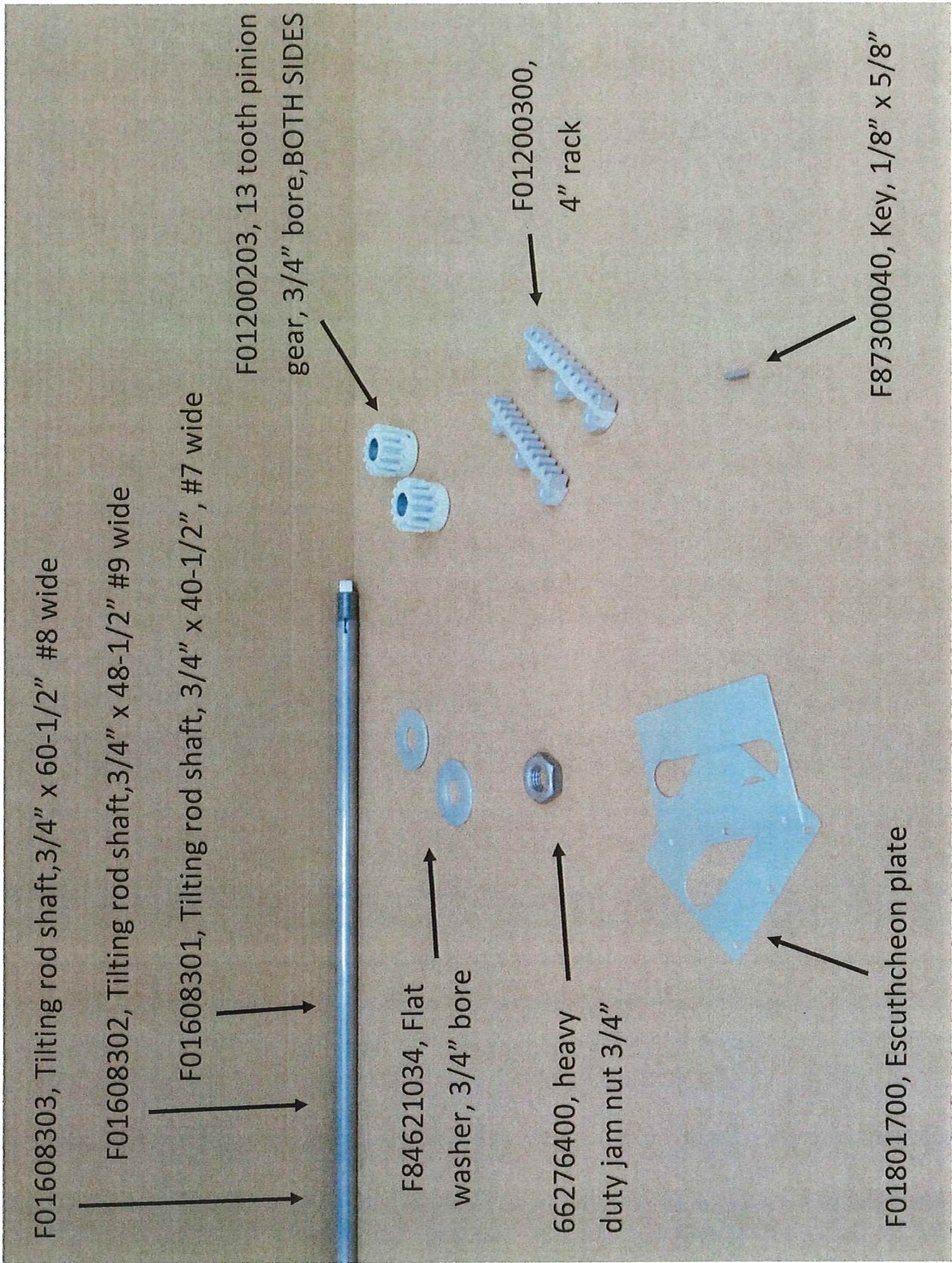
2 REQ'D



- 8 F83453402 2 #8 X 3/4 PAN HD S.M. SCR. STD
- 7 F83453402 2 SCREW STD #10 X 1/8 FLT. HD.
- 6 F84040078 4 SCREW-WOOD STD #10 X 7/8 FLT. HD.
- 5 35-000-3 2 BRACE-BOTTOM 3/4. 20 GA.
- 4 35-014 1 GIRT-ROCKER/RA ASSY
- 3 35-10007 1 GRAM STOP
- 2 35-015 1 ARM-ROCKER ASSY L.H.
- 1 35-015 1 ARM-ROCKER ASSY RH.

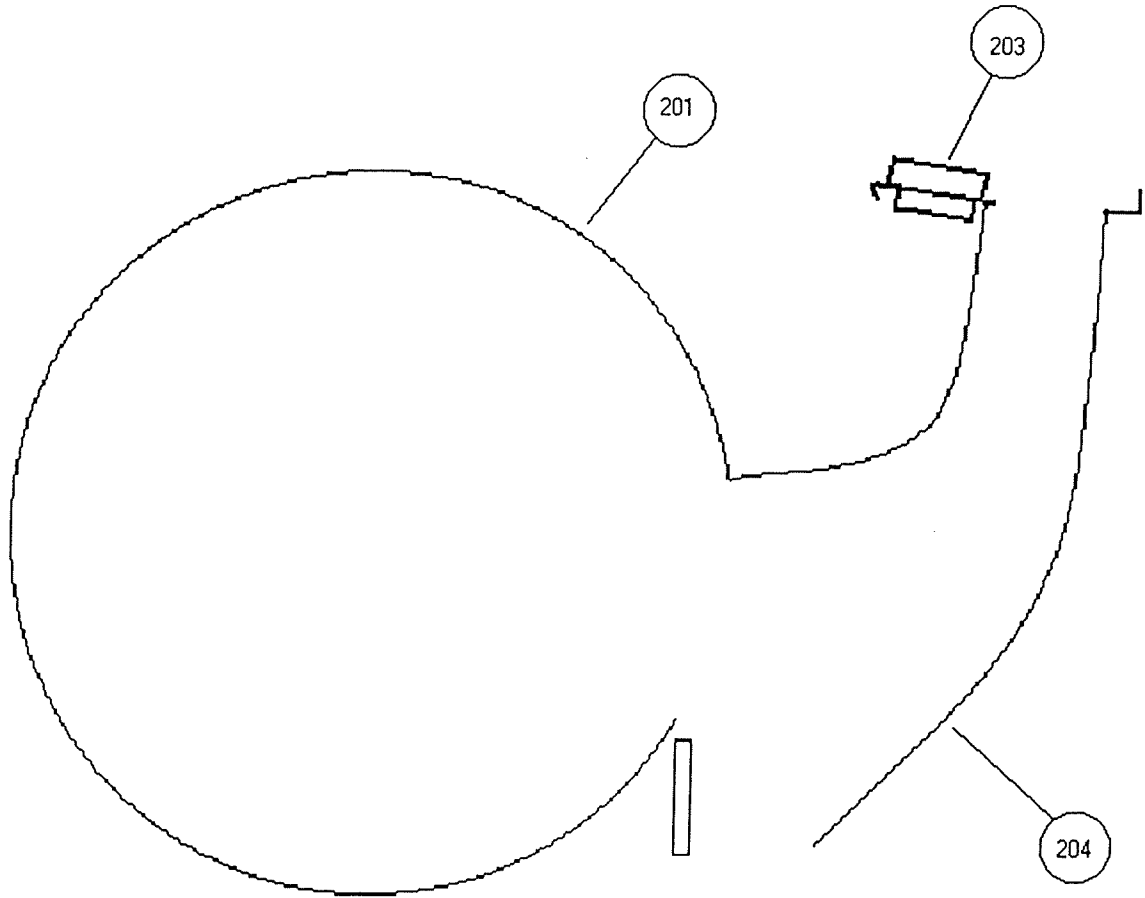
ITEM	PART NO.	QUAN	PART NAME	MATL.	REMARKS
ASSEMBLY					
TOP & BOT. ROCKER					
MICROFILMED					
DATE SEP 2 1981					
DOWN BY	TRD. BY	CHK. BY			
DATE 8-3-81	SCALE 3/4"				
A. T. FERRELL & CO.					
SAGINAW, MICH.					
MACH. NO. 574					
SHEET NO. CF03501501					

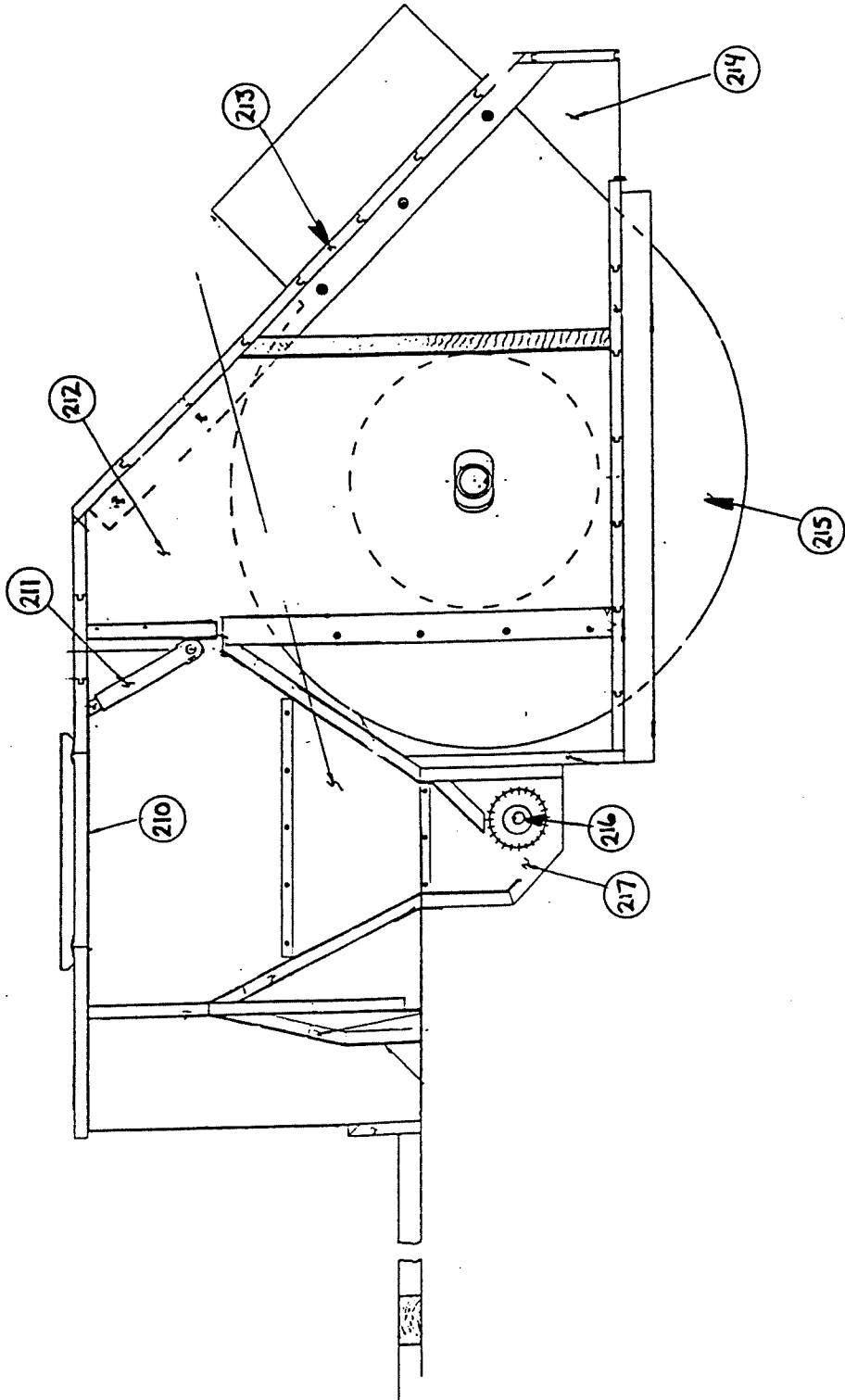
ASSY #	REMARKS	ITEM #S
CF03501500	STD.	USE ALL NOS
CF03501501	FOR BALL TRAYS	OMIT #4 & 8



Screen rocker adjusting assembly

Bottom Fan Metal





AIR TRUNK

